

MEETING NOTICE
ANNUAL COMMISSION MEETING
East Central Wisconsin Regional Planning Commission

Date: Thursday, May 23, 2024
Time: 10:00 a.m.
Place: In Person, Menasha City Center (City Hall) 100 Main Street – Room 133,
Menasha WI 54952 (maps attached – please note alternate route due to Racine
Street construction)

Please contact the East Central Office if you are unable to attend and arrange for an alternate to be present.

AGENDA

1. **Call to Order**
2. **Roll Call**
 - A. Welcome and Introduction of Alternates and Guests
3. **Business**
 - A. Presentation and action on the 2023 Annual Report
 - B. Nominating Committee Report
 1. Action on 2024-2026 Commission Chair and Vice Chair Nominations
 2. Action on 2024-2026 Standing Committee Appointment Structure
4. **Next Meeting**
 - A. **Commission Meeting:** The next Commission Board meeting will be following the Annual Meeting on Thursday, May 23, 2024.
5. **Adjourn**

Any person wishing to attend this meeting or hearing, who, because of a disability, requires special accommodations should contact the East Central Wisconsin Regional Planning Commission at (920) 751-4770 at least three business days prior to the meeting or hearing so that arrangements, within reason, can be made.

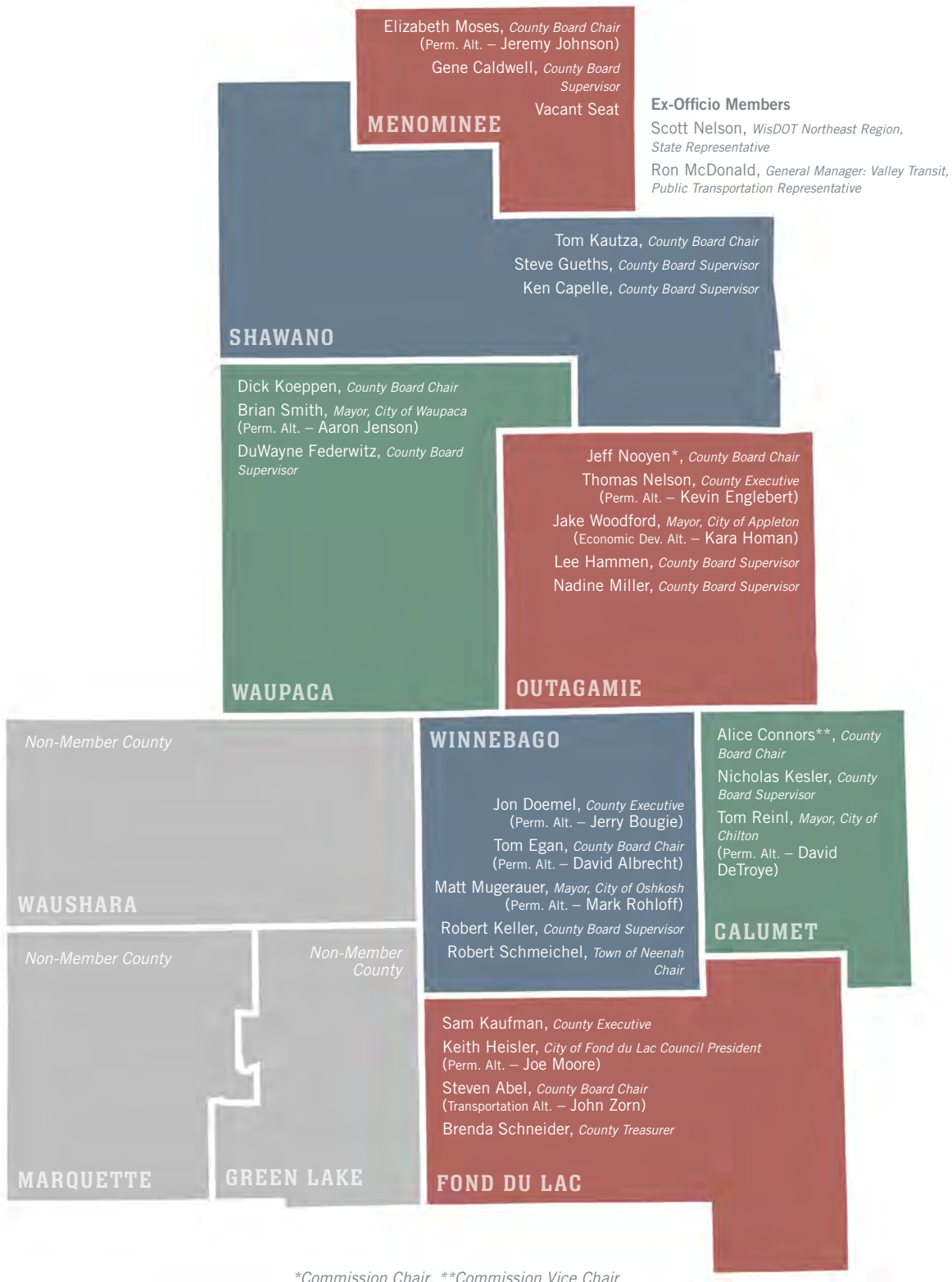
EAST CENTRAL WISCONSIN REGIONAL PLANNING COMMISSION



ANNUAL REPORT

DRAFT

COUNTIES & COMMISSIONERS



Ex-Officio Members
 Scott Nelson, *WisDOT Northeast Region, State Representative*
 Ron McDonald, *General Manager: Valley Transit, Public Transportation Representative*

*Commission Chair, **Commission Vice Chair

LETTER FROM THE CHAIR

To the Community Members and Elected Leaders of the East Central Region:

Over the past year, the Commission has continued to deliver high-quality planning services and support to communities throughout the Region, including several impactful projects in the core program areas.

ECONOMIC DEVELOPMENT

- ▶ Comprehensive Economic Development Strategy (CEDS) - Updated
- ▶ Small Communities Technical Assistance Program – Third Round, Four Communities
- ▶ Menominee Indian Tribe Economic Resiliency Project – Supported
- ▶ Regional Aviation Development Fund - Developed

ENVIRONMENTAL MANAGEMENT

- ▶ Fox Cities Sewer Service Area (SSA) Plan update
- ▶ SSA conformance reviews, amendments, maintenance
- ▶ Non-Metallic Mining Reclamation Program administration - 5 counties

LOCAL CONTRACTS

- ▶ City of Chilton Comprehensive Plan Update – On time, under budget

RECOGNITION

- ▶ ECWRPC's Small Community Technical Assistance Program received the "Overcoming Adversity Award" at the Mid-America Economic Development Council Conference
- ▶ ECWRPC's Equitable Engagement Toolkit and Guidebook received the "Innovation Award" at the American Planning Association - Wisconsin Chapter Conference

TRANSPORTATION PROGRAM

Regional Transportation Program

- ▶ Specialized Transportation Coordination Plan Updates – All member counties

Safe Routes to School Program

- ▶ Eight new participating schools and 25 school action plans completed
- ▶ Walking school bus, bike rodeo, project RADAR, bike helmet distribution programs
- ▶ Education campaigns, including development of informational videos

Metropolitan Planning Organization (MPO)

Administration – Appleton (Fox Cities), Oshkosh, and Fond du Lac

- ▶ Transportation Improvement Program (TIP) – All MPOs
- ▶ Surface Transportation Block Grant (STBG) Program – All MPOs
- ▶ Transportation Alternatives Set-Aside Program – All MPO's
- ▶ Comprehensive Safety Action Plan – Appleton (Fox Cities) MPO, Oshkosh MPO
- ▶ Bicycle & Pedestrian Plan – Fond du Lac MPO
- ▶ Electric Vehicle (EV) Readiness Plan – Oshkosh MPO
- ▶ Community Connectors Grant – Appleton (Fox Cities) MPO College Ave. Corridor

It has been my pleasure to serve as the Chair of East Central Regional Planning Commission during a period of renewed focus on the core program areas which has elevated the quality and value of programs and services being delivered to our member counties. Looking ahead, the Commission is currently working through an independent, objective assessment of its programs and operations with an eye towards continued improvements to build on our collective success as a region.

Sincerely,

Jeff Nooyen, Chair
Outagamie County Board Chair



COMMISSION HISTORY

TIMELINE

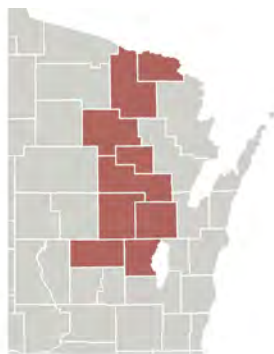
The East Central Wisconsin Regional Planning Commission (ECWRPC) was created under Executive Order No. 41, issued by Wisconsin Governor Patrick J. Lucey, dated June 29, 1972. This action was taken after the submittal of petitions by the ten counties within the East Central Region pursuant to Wisconsin State Statutes §66.945 (now State Statutes § 66.0309). ECWRPC was preceded by two area wide planning agencies; the Fox Valley Council of Governments (FVCOG) and the Northeastern Wisconsin Regional Planning Commission (NEWRPC). The Fox Valley Council of Governments was formed in 1956 and comprised 15 governmental units in the Appleton-Neenah and Oshkosh urbanized areas.

The Northeastern Wisconsin Regional Planning Commission formed in 1962 and was comprised of nine counties encompassing the Wolf River Basin. With the issuance of the U.S. Department of Housing and Urban Development's (HUD) Areawide Planning Organization (APO) and Areawide Principal Jurisdiction (APJ) certification requirements in July, 1970, these two agencies were dissolved and replaced by ECWRPC. The three northern counties of NEWRPC were removed from the region and Calumet, Fond du Lac, Green Lake, and Marquette Counties were added. The Commission continues to provide planning services and programs serving member Counties in Northeastern Wisconsin.



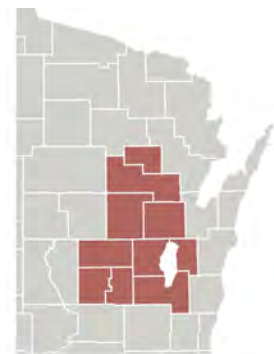
1956

Fox Valley Council of Governments



1962

Northeastern Wisconsin Regional Planning Commission



1972

East Central Wisconsin Regional Planning Commission

COMMISSION OVERVIEW

WHAT WE DO

The Commission was established to promote intergovernmental cooperation, regional planning, and a vision for the future. In addition, the Commission serves as the coordinating organization between federal, state, and local governments for the region. The Commission assists local units of government on issues that occur at a regional level and the Commission staff provides technical assistance, support, and services directly to individual units of government.

Over the past three years, East Central Wisconsin Regional Planning Commission has focused on developing the core program areas of Economic Development, Transportation, Regional Comprehensive Planning, and Environmental Management.

CORE PROGRAM AREAS

- ▶ Regional Comprehensive Plan
- ▶ Economic Development Program
- ▶ Environmental Management Program
- ▶ Transportation Program

ADDITIONAL PROGRAMS

- ▶ Water Quality Management
- ▶ NR-135 Non-Metallic Mining Reclamation Program
- ▶ GIS Data Analysis and Visualization
- ▶ Local Contracts



OUR MISSION

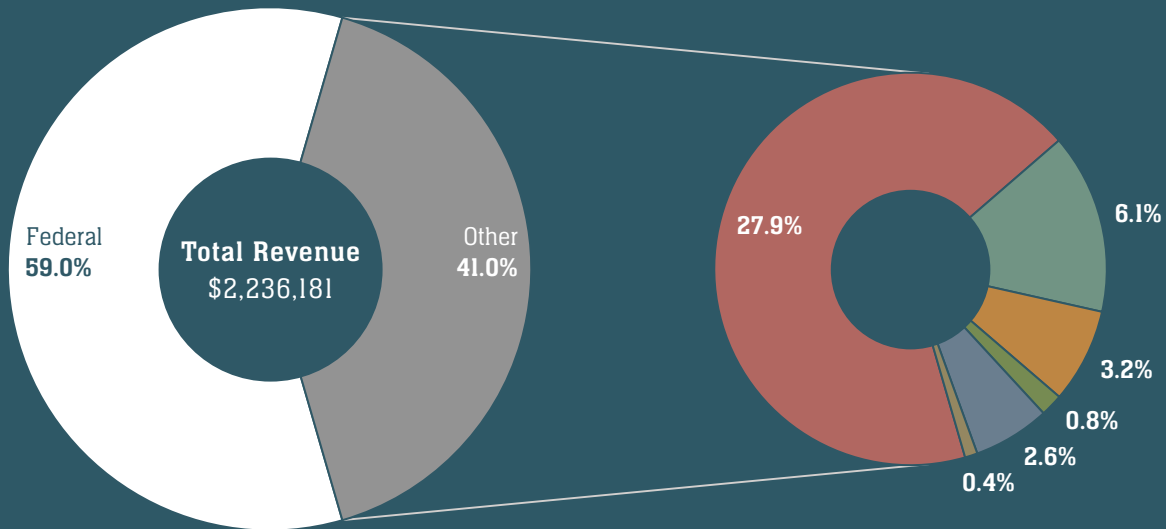
East Central builds relationships and cooperative, visionary growth strategies to keep our region beautiful, healthy, and prosperous.



OUR VISION

East Central effectively and efficiently develops, administers, and implements valued planning programs at the regional and local level, enhancing our communities' quality of life.

2023 OPERATING REVENUE SOURCES



- **Federal Grants** | \$1,318,871 | **59.0%**
- **County Levy** | \$625,000 | **27.9%**
- **NR-135 Program** | \$136,355 | **6.1%**
- **State Grants** | \$71,514 | **3.2%**

- **Local Grants** | \$16,940 | **0.8%**
- **Local Contracts** | \$58,026 | **2.6%**
- **Public Charges for Services** | \$9,475 | **0.4%**

COMMISSION FINANCIALS

AUDITED STATEMENT OF NET POSITION, 2023

Total Assets	\$1,155,864
Deferred Outflows <i>Pension and OPEB</i>	\$1,300,477
Total Liabilities	\$569,525
Deferred Inflows <i>Pension and OPEB</i>	\$821,562
Total Net Position	\$1,065,254

AUDITED STATEMENT OF REVENUES, EXPENSES, AND CHANGES IN NET POSITION, 2023

Total Operating Revenues	\$2,236,181
Total Operating Expenses	\$2,316,893
Operating Income	(\$80,712)
Total Non-Operating Revenue	\$20,978
Net Position-01/01/2023	\$1,124,988
Net Position-12/31/2023	\$1,065,254
Change in Net Position	(\$59,734)

STANDING COMMITTEE APPOINTMENTS

EXECUTIVE COMMITTEE

Alice Connors - Vice Chair	Calumet County
Steven Abel	Fond du Lac County
Jeremy Johnson (Perm Alt) for Elizabeth Moses	Menominee County
Jeff Nooyen - Chair	Outagamie County
Tom Kautza	Shawano County
Dick Koeppen	Waupaca County
David Albrecht (Perm Alt) for Tom Egan	Winnebago County

ENVIRONMENTAL MANAGEMENT COMMITTEE

David DeTroye (Perm Alt) for Tom Reinl	Calumet County
Brenda Schneider - Vice Chair	Fond du Lac County
Jeremy Johnson (Perm Alt) for Elizabeth Moses	Menominee County
Jeff Nooyen	Outagamie County
Kevin Englebert - Chair (Perm Alt) for Thomas Nelson	Outagamie County
Ken Capelle	Shawano County
Aaron Jenson (Perm Alt) for Brian Smith	Waupaca County
David Albrecht (Perm Alt) for Tom Egan	Winnebago County
Bob Schmeichel	Winnebago County

ECONOMIC DEVELOPMENT COMMITTEE

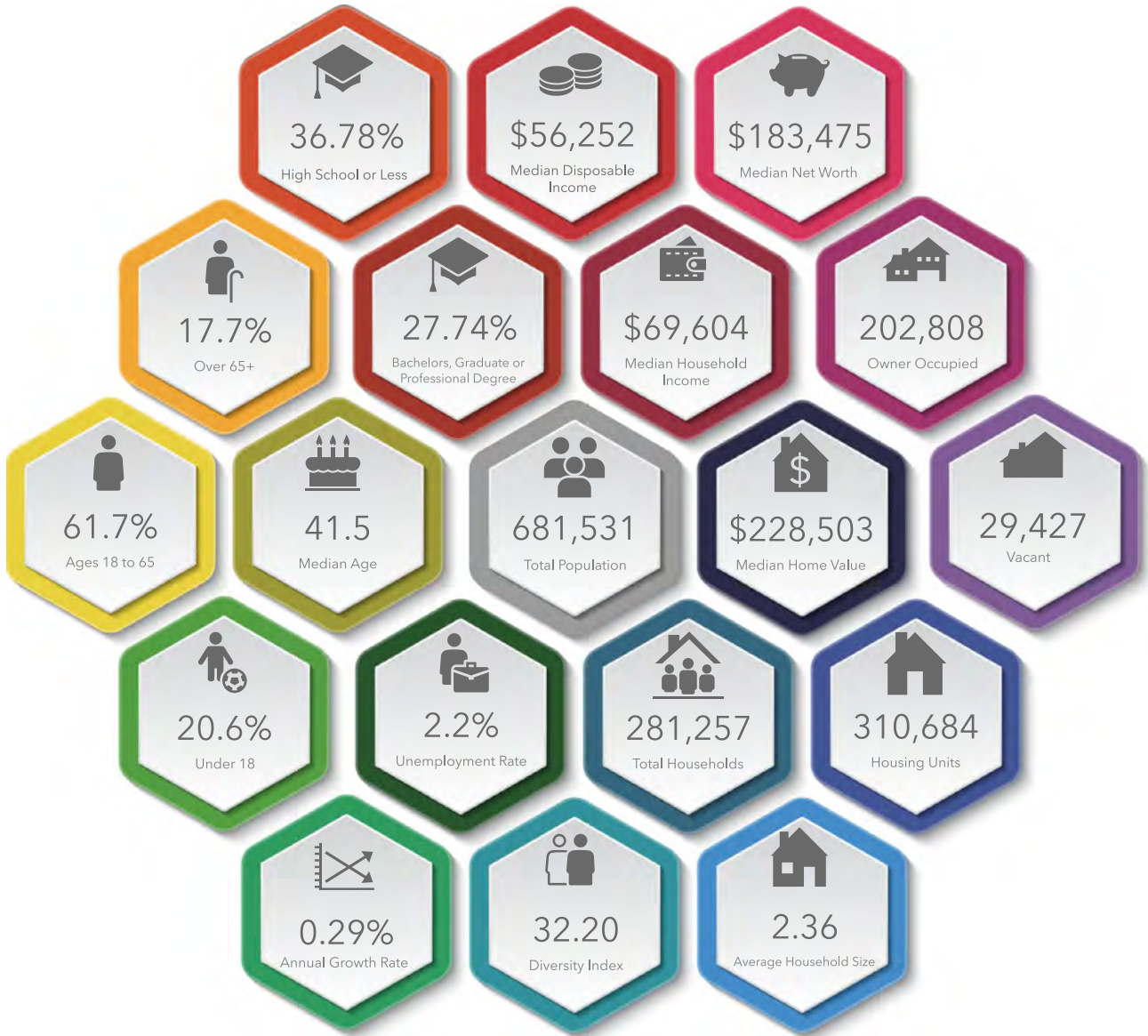
Alice Connors - Chair	Calumet County
Sam Kaufmann	Fond du Lac County
Gene Caldwell	Menominee County
Kara Homan (Economic Dev Alt) for Jake Woodford	Outagamie County
Nadine Miller	Outagamie County
DuWayne Federwitz	Shawano County
Steve Gueths	Waupaca County
Jerry Bougie - Vice Chair (Perm Alt) for Jon Doemel	Winnebago County
Mark Rohloff - (Perm Alt) for Matt Mugerauer	Winnebago County

TRANSPORTATION COMMITTEE

Nick Kesler	Calumet County
John Zorn (Transportation Alt) for Steven Abel	Fond du Lac County
Joe Moore (Perm Alt) for Keith Heisler	Fond du Lac County
Vacant	Menominee County
Lee Hammen - Vice Chair	Outagamie County
Tom Kautza	Shawano County
Dick Koeppen	Waupaca County
Robert Keller - Chair	Winnebago County
Ronald McDonald	Valley Transit Rep.
Nick Weber	WisDOT Rep.



STATE OF THE REGION



*10 County Region
 Source: ESRI Business Analyst 2023



GIS ANALYSIS & VISUALIZATION

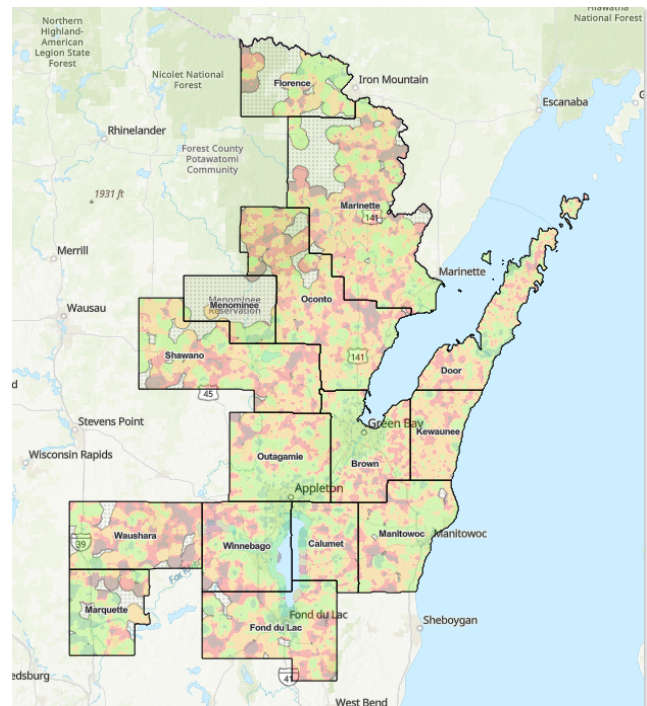
PROGRAM BACKGROUND

ECWRPC staff use Geographic Information Systems (GIS) to locate, analyze, and visualize planning data. The ECWRPC GIS team also maintains three online GIS Hubs for public use. The Economic Development Hub, Transportation Hub, and Water Quality Hub have many tools available for users to explore regional datasets, as well as build their own maps.



BROADBAND MAPPING

High-speed internet access is needed to fully engage in the economy, and it helps ensure public safety and health in local communities. Despite this need, many people lack broadband access, especially in rural areas. In 2023, ECWRPC GIS staff worked closely with New North, Bay-Lake Regional Planning Commission, Neverman Consulting, and regional counties to develop the New North Broadband Equity Access and Deployment (BEAD) Hub. This project was funded through a BEAD Local Planning Grant from the Wisconsin Public Service Commission. The BEAD Hub displays geospatial datasets that are important to planning for broadband internet expansion, such as broadband speeds, environmental factors, critical infrastructure, population, and housing.



3-D MODELING AND VISUALIZATION

ECWRPC is committed to remaining on the forefront of GIS technology. In 2023, staff utilized GIS to design 3-D models and animated flythroughs for transportation planning projects. As shown in the photo to the right, staff modeled County Highway N reconstruction efforts for Outagamie County.





ECONOMIC DEVELOPMENT

PROGRAM BACKGROUND

The East Central Wisconsin Regional Planning Commission is designated as an Economic Development District (EDD) by the U.S. Economic Development Administration (EDA). This designation provides funding to carry out regional Economic Development activities, which included several major items in 2023. In 2023, staff applied to the non-competitive 2024 – 2026 Partnership Planning Assistant Grant. This three-year grant is the primary funding source for the ECWRPC Economic Development Program.

COMPREHENSIVE ECONOMIC DEVELOPMENT STRATEGY

With the last major update occurring in 2018, staff diligently worked over the course of the last year to produce the 2023 Comprehensive Economic Development Strategy (CEDS), which is required by EDA to have a major update every five years.

Major Goals in the CEDS include:

- ▶ Access to housing and quality of life amenities for all
- ▶ Promote regional innovation and collaboration that supports a thriving and resilient business environment
- ▶ Sustain and expand regional physical infrastructure, assets, and amenities
- ▶ Cultivate organizational capacity within the public, non-profit, and private sectors to strengthen the resiliency of the regional economy and advance an exceptional quality of life

DISASTER RECOVERY AND ECONOMIC RESILIENCY PLAN

The Disaster Recovery and Economic Resiliency Plan evaluates the economic impact of the pandemic on key sectors of the regional economy. The plan is comprised of an inventory of economic data between 2015 and 2021 for the East Central region, its ten counties, and all NAICS 2-code sectors to identify a baseline of the regional economy prior to the pandemic. In addition, it includes commentary from stakeholders interviewed in 2021 to provide additional context on the impacts to key sectors of the regional economy during the pandemic.

ECONOMIC DEVELOPMENT HUB

Staff continued to make updates to the Economic Development Hub throughout 2023. The Hub is a key online repository for the ECWRPC Economic Development Program that is used to highlight regional initiatives, display economic development data, and host important documents and reports. Vital to guiding effective decisions, ECWRPC staff also compiled data reports for 9 different entities throughout the region.

COLLABORATION AND SUPPORT

Staff continued to participate on the Advisory Group for the Menominee Indian Tribe of Wisconsin Economic Resiliency Plan. Awarded by EDA, this plan will serve to enhance the economic resiliency and recovery of the Tribe and County following the pandemic. This plan, in addition to other Tribal, USDA, and EDA initiatives, was discussed on September 19th during the Greater Menominee Rural Partners Network Discussion.



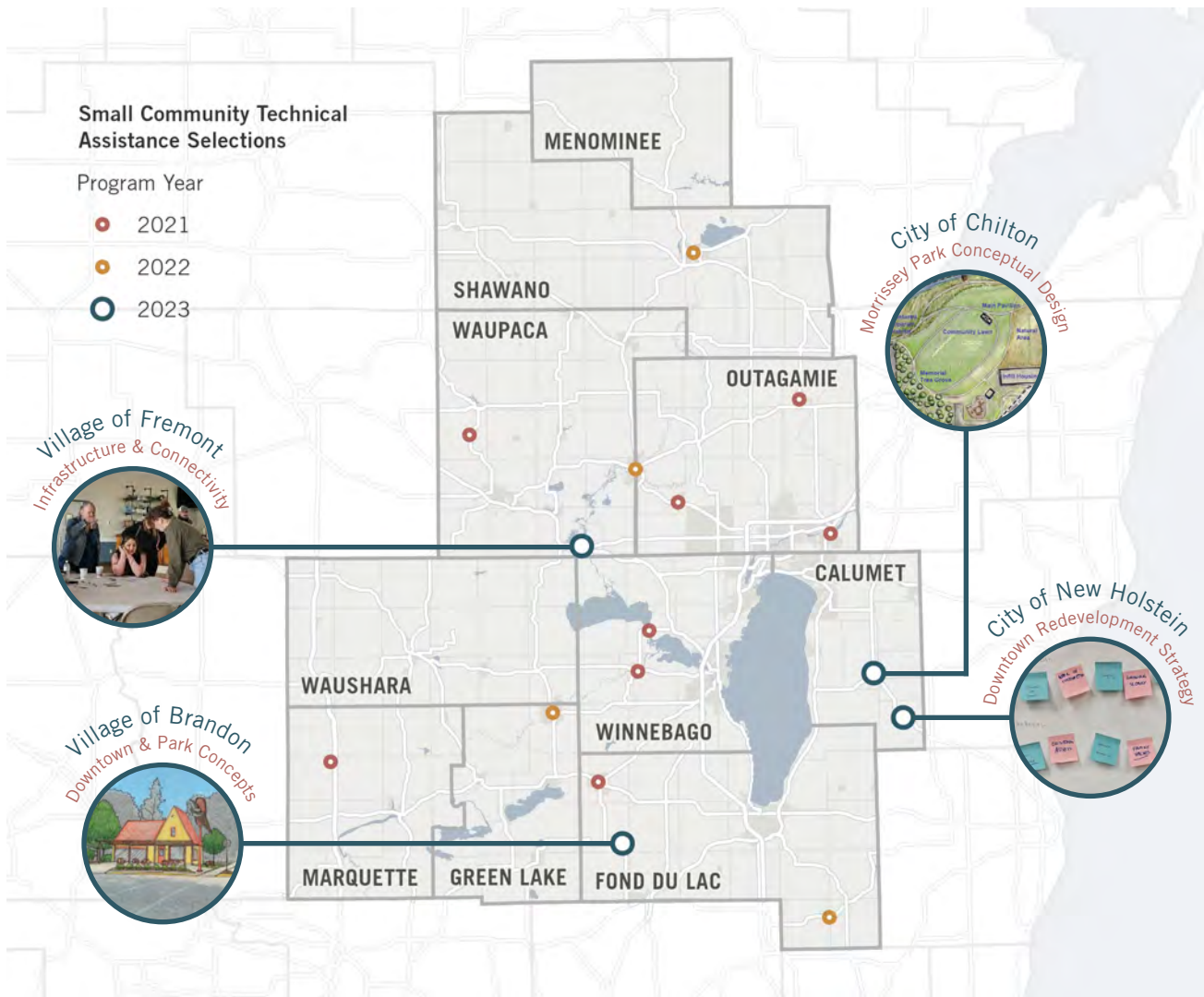
ECONOMIC DEVELOPMENT

SMALL COMMUNITY TECHNICAL ASSISTANCE PROGRAM

Partnering with Ayres Associates, ECWRPC provided free technical assistance workshops to four communities in our region in 2023. A competitive application for technical assistance was released in August with four communities selected to receive assistance in October.

Following the workshops, a final report was provided by Ayres that documented the results and gave recommendations. This assistance concluded the third year of the program with assistance provided to 16 total communities across the ECWRPC region.

2023 PROGRAM SELECTIONS





URBAN TRANSPORTATION

TRANSIT PLANNING

ECWRPC staff, on behalf of GO Transit, contracted with SRF Consulting to conduct an update to their Transit Development Plan. The project kicked off on May 2023 and is expected to conclude in April 2024.

ECWRPC staff, Valley Transit, and the City of Neenah worked with SRF Consulting on two studies: a ridership and fare survey for Valley Transit and a study to examine potential locations for the City of Neenah’s transfer center. This year-long project was completed in September 2023.

TRAVEL DEMAND MODEL

ECWRPC manages the Northeast Region Travel Demand Model (NERTDM) to predict traffic behavior with a data driven approach. The NERTDM is used to analyze the composition of traffic, purpose of travel, peak hour usage, and origin-destination linkages.

TRANSPORTATION IMPROVEMENT PROGRAM

In coordination with WisDOT Northeast Region, ECWRPC develops the Transportation Improvement Program (TIP) for each Metropolitan Planning Organization (MPO) which includes all anticipated federal and state aids for transportation projects in the urbanized area, as a prerequisite for federal funding approval.

COMPREHENSIVE SAFETY ACTION PLAN

The ECWRPC Comprehensive Safety Action Plan (CSAP) is a safety action plan developed for the Appleton (Fox Cities) MPO, the Oshkosh MPO, and the municipalities within the MPOs. The document is designed to satisfy the action plan requirements of the Safe Streets and Roads for All (SS4A) Grant Program, a federal discretionary program with \$5 billion in appropriated funds over five years (2022-2026).

URBAN TRANSPORTATION FUNDING AWARDED IN 2023

Project Description	MPO	Program	Federal Funds
Leonard Point Rd Reconstruction (Town of Algoma)	Oshkosh	STBG-U	\$4,152,708
CTH VV/Pioneer Rd Reconstruction (Fond du Lac County)	Fond du Lac	STBG-U	\$3,060,444
Lawe St Reconstruction (Appleton)	Appleton/Fox Cities	STBG-U	\$2,997,650
Shady Ln Reconstruction (Fox Crossing)	Appleton/Fox Cities	STBG-U	\$1,907,196
Marcella St/Kennedy Ave Multimodal Trail Project (Kimberly)	Appleton/Fox Cities	TA Set-Aside	\$682,318
Eisenhower Dr Multimodal Trail (Buchanan)	Appleton/Fox Cities	TA Set-Aside	\$643,641
STH 96/W Wisconsin Ave Sidewalk (Grand Chute)	Appleton/Fox Cities	TA Set-Aside	\$409,625
High Cliff State Trail Corridor Feasibility Study: Local Roads (Harrison)	Appleton/Fox Cities	TA Set-Aside	\$65,600
High Cliff State Trail Corridor Feasibility Study: STH 114 (Menasha)	Appleton/Fox Cities	TA Set-Aside	\$48,000
LED Street Lighting Conversion (Kaukauna and Menasha)	Appleton/Fox Cities	Carbon Reduction	\$421,706
Smart Arrow Boards and PCMS (Outagamie County)	Appleton/Fox Cities	Carbon Reduction	\$36,000



URBAN TRANSPORTATION

COLLEGE AVENUE CORRIDOR PROJECT

ECWRPC partnered with Outagamie County Development & Land Services Department to apply for the [Community Connectors Grant Program](#) and was selected as one of 15 teams from across the country as the inaugural cohort for this program. This grant program is supported by the Robert Wood Johnson Foundation and Smart Growth America in collaboration with Equitable Cities, the New Urban Mobility Alliance, and America Walks. The program helps advance locally driven projects to reconnect communities separated or harmed by transportation infrastructure and tap available federal and state funds to support them.

The team's project focus is the College Avenue Corridor from Mall Drive to Richmond Street in Grand Chute and Appleton. The Core Team consists of Outagamie County, ECWRPC, Town of Grand Chute, City of Appleton, Appleton Area School District, Fox Cities Convention and Visitors Bureau, WisDOT, and the Boys and Girls Club of the Fox Valley. Partner Organizations include ECWRPC Safe Routes to School, Appleton COTS, Pillars, Inc., Valley Transit, Appleton International Airport, and Outagamie County Public Health Division. Members of the team attended a convening in Atlanta, GA, November 13 -15, 2023 to kick off the project.





14,451

Miles of Roadway
in the Region



697

Miles of Trails
in the Region



157

Miles of Bike Lanes
in the Region



RURAL TRANSPORTATION

SPECIALIZED TRANSPORTATION COORDINATION PLANS

East Central Wisconsin Regional Planning Commission facilitated the process to update the Specialized Transportation Coordination Plan for each of its seven member counties ([Calumet](#), [Fond du Lac](#), [Menominee](#), [Outagamie](#), [Shawano](#), [Waupaca](#), and [Winnebago](#)). These plans are required to be updated every five years to remain eligible for certain federal and state funding sources. The particular funding pool that this plan connects to offers financial assistance for the purpose of providing transportation services for seniors and individuals with disabilities.

Public involvement was a major focus and included examining existing transportation options, setting goals, and prioritizing action items. ECWRPC developed and released a survey and held a public participation session in each county to actively gather this public input. The Specialized Transportation Coordination Plan process began in the summer of 2023 and concluded with adoption in October 2023.



PASER STUDIES

ECWRPC staff assisted the Town of Auburn and Town of Empire in Fond du Lac County to update the Pavement Surface Evaluation and Rating (PASER) scores on all local roadways. Towns are requested by the Wisconsin Department of Transportation (WisDOT) to update their local road ratings every two years. Staff utilized GIS and technical expertise to complete a comprehensive inventory and evaluation of roadways in these townships. This data was then entered into the Wisconsin Information System for Local Roads (WISLR) on behalf of the town to complete the required update.

SMALL URBAN AREAS

ECWRPC staff worked with local communities in 2023 to update the small urban area boundaries for New London, Ripon, Shawano-Cecil, and Waupaca. An urban area has a population of at least 5,000 and less than 50,000 people. These boundaries are updated every 10 years to reflect land use and population changes determined by the decennial Census. The urban area boundaries are then used to summarize and report Census data, as well as update the functional classification of the area's roadways.



ACTIVE TRANSPORTATION

FOND DU LAC MPO BICYCLE AND PEDESTRIAN PLAN

East Central staff kicked off the Fond du Lac MPO Bicycle and Pedestrian Plan in June 2023. This plan involved the six E's of active transportation planning: Education, Engagement, Encourage, Engineering, Evaluation, and Equity. With insight from an advisory group, online and in-person community engagement, and meetings with stakeholders, a draft plan was developed in December 2023.

COMMUNITY ENGAGEMENT TOOLKIT AND GUIDEBOOK

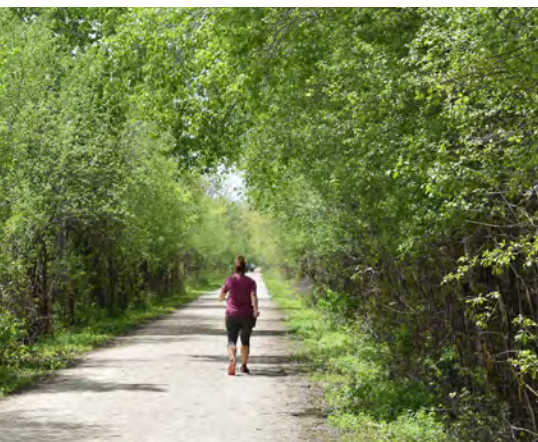
The Equitable Engagement Toolkit and Guidebook was adopted by the Commission in January 2023. This guidebook provides best-practice resources for ECWRPC staff and communities to engage community members, with an emphasis on engaging historically underserved populations, throughout the planning process. In September 2023, the Equitable Engagement Toolkit and Guidebook received an award from the American Planning Association Wisconsin Chapter for Innovations in Planning.

HIGH CLIFF CONNECTION

In March 2023, ECWRPC staff and partners were invited to speak about the [High Cliff Connection project](#) to the Wisconsin Legislative Trails Caucus. This was an opportunity to highlight this planned active transportation concept to state elected officials.



While ECWRPC staff remain involved in the core team for this project, it is under leadership of a Trail Coordinator, who was hired by the Community Foundation for the Fox Valley Region (CFFVR) in January of 2023. The Trail Coordinator, Lynda Fink of Trail Strategies, LLC, will be working with communities on planning efforts, including conducting continued studies and securing funding. A generous \$2M donation was made by the David and Rita Nelson Family Fund within the CFFVR toward this project, and these funds may be used as leverage for additional funding to make this connection a reality.





25

school action plans were completed.



174

schools participated in one day events encouraging walking & bicycling to school.



759

helmets were distributed throughout our service area during community events.



907

elementary aged students attended our bike rodeos.



SAFE ROUTES TO SCHOOL

PROGRAM BACKGROUND

The East Central Wisconsin Regional [Safe Routes to School program](#) is dedicated to increasing education and awareness of the benefits of walking and bicycling to students in K-12 schools. By starting with children and trips to school, communities become safe places for everyone to walk and bike. Safe Routes to School programs and initiatives help ease congestion and air pollution, reduce our reliance on cars, strengthen community connections and contribute to students' readiness to learn in school.

PARTNERSHIPS

Notably, in 2023, eight new schools participated in Safe Routes to School programs and initiatives.

The Safe Routes to School team also worked with Marshfield Clinic, Department of Children and Families, and the Wisconsin Afterschool Network to make short informational videos related to the Walking School Bus program and other alternatives to vehicle travel.





28

Sanitary Sewer
Extension Reviews



19

Private Sanitary
Lateral Reviews



1

Preliminary Certified
Survey Map Review



1

SSA Amendment
Review



3

Facility Plan
Reviews



5

Mainline
Replacements



WATER QUALITY MANAGEMENT

PROGRAM BACKGROUND

The State of Wisconsin's Areawide Water Quality Management Planning (AWQMP) Program is authorized under chapter NR-121 Wisconsin Administrative Code. The purpose of the program is to evaluate various means of achieving water quality goals and standards set forth in the 1972 amendments to the Federal Water Pollution Control Act, commonly known as the Clean Water Act.

Sewer Service Area (SSA) Planning is one component of the AWQMP. ECWRPC administers the SSA Planning Program under a contract agreement with the Wisconsin Department of Natural Resources (WDNR). Sewer Service Area Plans are prepared to identify areas where public sanitary sewer service could be provided in a cost effective and environmentally sound manner. Each SSA Plan maps out Environmentally Sensitive Areas such as streams, floodplains, wetlands, and other locations where sewer service is excluded to protect the community from adverse water quality impacts.

Administration activities include reviewing sanitary sewer extension and private sanitary lateral requests for conformance with SSA Plans, processing sewer service area amendment requests, conducting subdivision plat reviews, and maintaining twenty-five SSA Plans throughout the Region.

FOX CITIES SSA PLAN UPDATE

In 2023, East Central Regional Plan Commission updated the Fox Cities Sewer Service Area Plan for 2040. The Fox Cities region is comprised of four sewer service areas including the Appleton SSA, Fox West SSA, Heart of the Valley SSA, and Neenah-Menasha SSA. Twenty-two municipalities were engaged and effected by the 2040 Fox Cities Sewer Service Area Plan update as well as various other stakeholders and agencies.



Before Reclamation



After Reclamation



NR-135 NON-METALLIC MINING

PROGRAM BACKGROUND

The NR-135 Non-Metallic Mining Reclamation Program was established in December of 2000 with the goal of providing a framework for statewide regulation of non-metallic mining reclamation. This is accomplished by establishing uniform reclamation standards and requiring counties to adopt a reclamation ordinance capable of ensuring compliance with these standards. ECWRPC administers these ordinances on behalf of Calumet, Outagamie, Shawano, Waupaca and Winnebago counties.

Administration activities for the program include:

- ▶ Reclamation plan reviews, permit approvals
- ▶ Site inspections
- ▶ Operator and WDNR annual reporting
- ▶ Operator financial assurance requirements
- ▶ Certification of completed reclamation activities

QUARTERLY UPDATES

The NR-135 program is self-funded exclusively by mine operators based on the amount of acreage considered active for each mine. The acreage fees are reviewed annually to cover the cost to administer the program. The budget is then reviewed annually by county staff and included in East Central's Work Program and Budget. The Commission met with the County planning directors throughout 2023 and provided quarterly updates to the counties to ensure operator compliance with the ordinance.

UAV FLIGHTS

ECWRPC staff continued to improve the use of Unmanned Aerial Vehicle (UAV) technology in 2023. The UAV program enables staff to view up-to-date site imagery, create 2D and 3D images, track site changes, calculate topsoil and overburden volumes, and generate final reclamation documentation.

2023 PROGRAM HIGHLIGHTS

County	# of Sites	Active Acres	Reserve Acres	Reclaimed Acres	UAV Flights
Calumet	20	522	736	0	9
Outagamie	45	1,354	1,641	13	8
Shawano	45	646	883	7	7
Waupaca	44	685	1,382	11	5
Winnebago	41	971	1,157	13	4
Total	195	4,178	5,799	44	33

COMMISSION STAFF



**Melissa
Kraemer Badtke**
Executive
Director



**Craig
Moser**
Deputy
Director



**Sara
Otting**
Controller



**Leann
Buboltz**
Administrative
Coordinator



**Michael
Zuege**
GIS
Manager



**Tim
Badtke**
IT
Manager



**Kim
Biedermann**
Principal
Planner



**Scott
Konkle**
Senior
Planner



**Jennie
Mayer**
Senior
Planner



**Joe
Stephenson**
Senior
Planner



**Kate
Blackburn**
Associate
Planner



**Chris
Colla**
Associate
Planner



**Kim
Dieck**
Associate
Planner



**Colin
Kafka**
Associate
Planner



**Kia
Kling**
Associate
Planner



**Brice
Richardson**
Associate
Planner



**Brenna
Root Whitby**
Associate
Planner



**Casey
Peters**
GIS
Analyst I



**Rachel
Roth**
GIS
Analyst I



400 Ahnaip Street, Suite 100, Menasha, Wisconsin 54952-3100
(920) 751-4770 | www.ecwrpc.org | ecwrpc.maps.arcgis.com/home/index.html

TO: Nominating Committee
FROM: Mark Rohloff, Chair of the Nominating Committee
DATE: May 9, 2024
RE: Appointments of the 2024-2026 Commission Chair, Vice Chair and Standing Committee Appointments

2024-2026 Commission Chair and Vice Chair

The Nominating Committee met on Wednesday, March 23rd, 2024 and Wednesday, May 8th, 2024 to discuss the appointments of the Commission Chair, Vice Chair and the Standing Committee Appointments.

The Nominating Committee reviewed and discussed the 2024-2026 Commission Chair and Vice Chair. The Committee had two nominations for the Commission Chair and the Committee nominated Alice Connors, Calumet County, as the Chair of the Commission for 2024-2026. Jeremy Johnson, Menominee County, was nominated as the 2024-2026 Vice Chair of the Commission.

Nominating Committee Recommendation: The Nominating Committee recommends the approval of Alice Connors, Calumet County, for the 2024-2026 Commission Chair and Jeremy Johnson, Menominee County, Vice Chair. They will serve for a two year term as noted in the Commission's bylaws.

2024-2026 Standing Committee Appointments

The Nominating Committee reviewed and discussed the Standing Committee Appointments. Standing Committee Appointments were discussed for the following Committees of the Commission:

- Executive Committee
- Economic Development Committee
- Environmental Management Committee
- Transportation Committee
- Regional Aviation Development Committee

The Committee approved the 2024-2026 Standing Committee appointments as presented in the attached table.

Nominating Committee Recommendation: The Nominating Committee recommends the approval of the Standing Committee Appointments as presented.

Table 1: 2024 - 2026 Commission Board Appointments						
Member County	Population on 2010**	Population on 2020**	Commission Board Appointment	Name	ECWRPC Term Expires	Office Term Expires
Calumet County	48,971	52,442	County Board Chair	Alice Connors	April, 2026	April, 2026
			County Board Supervisor	Nick Kesler	April, 2026	April, 2026
			Mayor of the Largest City - Chilton	Tom Reinl / Perm Alt. David DeTroye	April, 2026	April, 2026
Fond du Lac County	101,633	104,154	County Executive	Sam Kaufman	April, 2025	April, 2025
			County Board Chair	Steve Abel /Perm Alt. Dean Will	April, 2026	April, 2026
			County Board Appt. #1	Brenda Schneider	April, 2026	April, 2026
			Mayor of the Largest City - Fond du Lac	(Council Pres) Tiffany Brault/Perm Alt Joe Moore	April, 2026	April, 2026
Menominee County*	4,232	4,255	County Board Chair	Elizabeth Moses / Alt. Jeremy Johnson	April, 2025	April, 2025
			County Board Supervisor	Denise Gilane	April, 2025	April, 2025
			County Board Appt. #1	Gene Caldwell	April, 2025	April, 2025
Outagamie County	176,695	190,705	County Executive	Thomas Nelson / Perm Alt. Kevin Englebert	April, 2026	April, 2027
			County Board Chair	Dan Gabrielson	April, 2026	April, 2026
			County Board Appt. #1	Karen Lawrence	April, 2026	April, 2026
			County Board Appt. #2	Lee Hammen	April, 2026	April, 2026
Shawano County	41,949	40,881	Mayor of the Largest City - Appleton	Jake Woodford	April, 2026	April, 2028
			County Board Chair	Tom Kautza	April, 2026	April, 2026
			County Board Supervisor	Ken Capelle	April, 2026	April, 2026
Waupaca County	52,410	51,812	County Board Appt. #1	Matt Pleshek	April, 2026	April, 2026
			County Board Chair	Dave Morack	April, 2026	April, 2026
			County Board Supervisor	DuWayne Federwitz	April, 2026	April, 2026
Winnebago County	166,994	171,730	Mayor of the Largest City - Waupaca	Brian Smith /Perm Alt. Aaron Jenson	April, 2026	April, 2026
			County Executive	Jon Doemel / Perm Alt. Jerry Bougie	April, 2025	April, 2025
			County Board Chair	Tom Egan / Perm Alt. Nate Gustafson	April, 2026	April, 2026
			County Board Appt. #1	Austin Hammond	April, 2026	April, 2026
Ex-Officio Members	NA	NA	County Board Appt. #2	Bob Schmeichel	April, 2025	April, 2025
			Mayor of the Largest City - Oshkosh	Matt Mugerauer / Perm Alt. Mark Roloff	April, 2025	April, 2025
Ex-Officio Members	NA	NA	Valley Transit Manager	Ron McDonald	April, 2026	NA
			WisDOT - NE Region - Green Bay	Scott Nelson/Nick Weber	April, 2026	NA

*Menominee County elections fall on the odd numbered years (i.e. 2023)

**Population Data provided by the 2010 and 2020 U.S. Census.

***Per the Commission's By-laws, once a member County reaches 50,000 in population the Mayor of the largest City serves on the Commission Board. For every 50,000 in population thereafter the member

Table 2: PROPOSED 2024 2026 ECWRPC Commission Committee Appointments

Standing Committee	Committee Member Number	County	Appointment Position	Name
Executive Committee	Committee member #1	Calumet County	County Bd Chair	Alice Connors
	Committee member #2	Fond du Lac County	County Bd Chair	Steve Abel / Perm Alt. Dean Will
	Committee member #3	Menominee County	County Bd Chair	Elizabeth Moses / Perm Alt. Jeremy Johnson
	Committee member #4	Outagamie County	County Bd Chair	Dan Gabrielson
	Committee member #5	Shawano County	County Bd Chair	Tom Kautza
	Committee member #6	Waupaca County	County Bd Chair	Dave Morack
	Committee member #7	Winnebago County	County Bd Chair	Tom Egan / Perm Alt. Nate Gustafson
Environmental Management Committee	Committee member #1	Calumet County	Mayor of Largest City - Chilton	Tom Reinl / Perm Alt. David DeTroye
	Committee member #2	Fond du Lac County	County Board Appt. #1	Brenda Schneider
	Committee member #3	Menominee County	County Board Chair	Elizabeth Moses / Perm Alt. Jeremy Johnson
	Committee member #4	Outagamie County	County Board Chair	Dan Gabrielson
	Committee member #5	Outagamie County	County Executive	Thomas Nelson / Perm Alt. Kevin Englebert
	Committee member #6	Shawano County	County Bd. Appt.	Matt Pleshek
	Committee member #7	Waupaca County	Mayor of the Largest City - Waupaca	Brian Smith / Perm Alt. Aaron Jenson
	Committee member #8	Winnebago County	County Board Chair	Tom Egan / Perm Alt. Nate Gustafson
	Committee member #9	Winnebago County	County Board Appt #2	Bob Schmeichel
Economic Development Committee	Committee member #1	Calumet County	County Board Chair	Alice Connors
	Committee member #2	Fond du Lac County	County Executive	Sam Kaufman
	Committee member #3	Outagamie County	Mayor of Largest City - Appleton	Jake Woodford / EDC Alt. Kara Homan
	Committee member #4	Outagamie County	County Board Appt. #1	Karen Lawrence
	Committee member #5	Menominee County	County Board Supervisor	Gene Caldwell
	Committee member #6	Waupaca County	County Board Supervisor	DuWayne Federwitz
	Committee member #7	Shawano County	County Board Supervisor	Ken Capelle
	Committee member #8	Winnebago County	County Executive	Jon Doemel / Perm Alt. Jerry Bougie
	Committee member #9	Winnebago County	Mayor of Largest City - Oshkosh	Matt Mugerauer / Perm Alt. Mark Rohloff
Transportation Committee <i>* County contains a portion of a Metropolitan Planning Area</i>	Committee member #1	Calumet County*	County Board Supervisor	Nick Kesler
	Committee member #2	Fond du Lac County*	County Board Chair	Steve Abel / Perm Alt. Dean Will
	Committee member #3	Fond du Lac County	City Council President	Tiffany Brault / Perm Alt. Joe Moore
	Committee member #4	Menominee County	County Bd. Appt.	Denise Gilane
	Committee member #5	Outagamie County*	County Board Appt. #2	Lee Hammen
	Committee member #6	Shawano County	County Board Chair	Tom Kautza
	Committee member #7	Waupaca County	County Board Chair	Dave Morack
	Committee member #8	Winnebago County*	County Board Appt. #1	Austin Hammond
	Committee member #9	Ex Officio	Valley Transit	Ronald McDonald
	Committee member #10	Ex Officio	WisDOT-NE Region	Scott Nelson / Nick Weber
Special Committee	Committee Member Number	County/Organization	Appointment Position	Name
Regional Aviation Development Fund Committee	Committee member #1		Executive Committee Rep	Alice Connors
	Committee member #2		Economic Development Committee Rep	Matt Mugerauer / Perm Alt. Mark Rohloff
	Committee member #3		Transportation Committee Rep	Dave Morack
	Committee member #4	Outagamie County	Outagamie Commissioner	Thomas Nelson / Perm Alt. Kevin Englebert
	Committee member #5		Business Community Rep	Gena Miller, Menasha Packaging
	Committee member #6	Air Wisconsin	Airport/Aviation Community Rep	Rob Binns, Air Wisconsin
	Committee member #7		Travel/Tourism Community Rep	Chip Juedes, Fox World Travel
	Committee member #8	Ex-Officio (Non-Voting)	Appleton Airport Director	Abe Weber
	Committee member #9	Ex-Officio (Non-Voting)	CVB/Tourism/Economic Development Rep	Pam Seidl
	Committee member #10	Ex-Officio (Non-Voting)	ECWRPC Executive Director	Melissa Kraemer Badtke