



2025-2029

CITY OF SHAWANO

COMPREHENSIVE OUTDOOR RECREATION PLAN



CITY OF SHAWANO

**COMPREHENSIVE OUTDOOR
RECREATION PLAN 2025-2029**

ADOPTED OCTOBER 9TH, 2024

ACKNOWLEDGEMENTS

COMMON COUNCIL

Bruce Milavitz, *Mayor*
Brad Keuschel, *District 1 Alderperson*
Jim Hauer, *District 2 Alderperson*
Kevin Barkow, *District 3 Alderperson*
Jack Young, *District 4 Alderperson*
Sandy Steinke, *District 5 Alderperson*
John Hoeffs, *District 6 Alderperson*

PARK AND RECREATION COMMISSION

William E Krenger
Seth Mailahn
Nickiann Meyers
John Stang
Kevin Barkow, *District 3 Alderperson*

CITY OF SHAWANO

Matt Hendricks, *Director of Parks, Recreation, and Special Projects*
Eddie Sheppard, *City Administrator*

EAST CENTRAL WISCONSIN REGIONAL PLANNING COMMISSION

Rachel Roth, *GIS Analyst*
Joe Stephenson, *Senior Planner*

TABLE OF CONTENTS

CHAPTERS

- 06 Chapter 01. Introduction
- 15 Chapter 02. Recreational Resources
- 34 Chapter 03. Recreational Needs
- 45 Chapter 04. Community Voice
- 62 Chapter 05. Goals and Recommendations
- 84 Chapter 06. Resolution of Adoption

MAPS

- 11 Map 1-1. City of Shawano Location
- 13 Map 1-2. Community Overview
- 31 Map 2-1. Bicycle and Pedestrian Facilities
- 32 Map 2-2. Natural Resources
- 41 Map 3-1. Residential Areas Served by a Park
- 61 Map 4-1. Interactive Map Results
- 70 Map 5-1. Recommended Bicycle and Pedestrian Facilities

TABLES

- 17 Table 2-1. City of Shawano Park Classification Definitions
- 28 Table 2-2. City of Shawano Park Matrix
- 36 Table 3-1. Population Trends and Projections (2000-2040)
- 38 Table 3-2. City of Shawano Park Facilities By Prevalence and Population per Facility
- 39 Table 3-3. Estimated Change in Statewide Participation in Nature-Based Activities (2020-2040)
- 43 Table 3-4. Shawano County Key Health Metrics (2024)
- 57 Table 4-1. Q9 Results: 2024 vs 2020
- 76 Table 5-1. City of Shawano CORP 5-Year Action Program (Part One)
- 77 Table 5-2. City of Shawano CORP 5-Year Action Program (Part Two)
- 78 Table 5-3. City of Shawano CORP 5-Year Action Program (Part Three)

TABLE OF CONTENTS

TABLES

79	Table 5-4. WDNR Knowles-Nelson Stewardship Local Assistance Grant Programs
80	Table 5-5. Federal Recreation Grant Programs
81	Table 5-6. WDNR Department Grant Programs (Part One)
82	Table 5-7. WDNR Department Grant Programs(Part Two)
83	Table 5-8. Other Federal, State, and Community Grant Programs

FIGURES

08	Figure 1-1. Four Phased Plan Development Process
09	Figure 1-2. Plan Timeline
12	Figure 1-3. City of Shawano Quick Facts
16	Figure 2-1. City of Shawano Park and Recreation Facilities Quick Facts
35	Figure 3-1. Recreational Needs Assessment Components
37	Figure 3-2. Population Trends and Projections (2000-2040)
37	Figure 3-3. Median Age Trends (2010, 2022)
40	Figure 3-4. Acres of Parkland per 1,000 Residents (Communities <20,000 residents)
40	Figure 3-5. Number of Residents per Park (Communities <20,000 residents)
50	Figure 4-1. Demographics of Survey Respondents
51	Figure 4-2. Q1 Results
51	Figure 4-3. Q2 and Q3 Results
52	Figure 4-4. Q4 Results
52	Figure 4-5. Q5 Results
53	Figure 4-6. Q6 Results
54	Figure 4-7. Q7 Results
55	Figure 4-8. Q8 Part 1 Results
56	Figure 4-9. Q8 Part 2 Results
57	Figure 4-10. Q9 Results
58	Figure 4-11. Q10 Results
59	Figure 4-12. Q11 Results
60	Figure 4-13. Map Comment Types

1

INTRODUCTION



INTRODUCTION

PLAN PURPOSE

The City of Shawano Comprehensive Outdoor Recreation Plan (CORP) is updated every five years, serving as a 20-year strategic guide for the development of parks, open spaces, and recreation activities in the City. The purpose of this document is to assess current park conditions, plan for future park improvements, and establish goals and objectives for implementation. By integrating both quantitative data and robust public feedback, the CORP reflects the community's collective vision for Shawano's park system.

This document was developed in conjunction with East Central Wisconsin Regional Planning Commission, the City of Shawano Parks and Recreation Department, the City of Shawano Park and Recreation Commission, local organizations, and community members. The CORP update continues a long history of successful parks and recreation planning within the City of Shawano and allows the City to participate in grant programs targeted for park acquisition and development. These competitive programs, administered by the Wisconsin Department of Natural Resources (DNR), have proven to be an excellent complement to local funding sources, contributing to many park improvements over the past decade.



PLAN PROCESS

A project kickoff meeting was held on February 21st, 2024 with the City of Shawano Park and Recreation Commission, ECWRPC staff, and the Director of Parks, Recreation, and Special Projects for the City of Shawano, Matt Hendricks. The CORP was developed in four phases, as depicted in Figure 1-1.

A draft of the plan was completed on September 4th, 2024, and the final plan was adopted on October 9th, 2024. This plan was approved by the City of Shawano Park and Recreation Commission and the City of Shawano Planning Commission, with final adoption by the City of Shawano Common Council.

FIGURE 1-1. FOUR PHASED PLAN DEVELOPMENT PROCESS



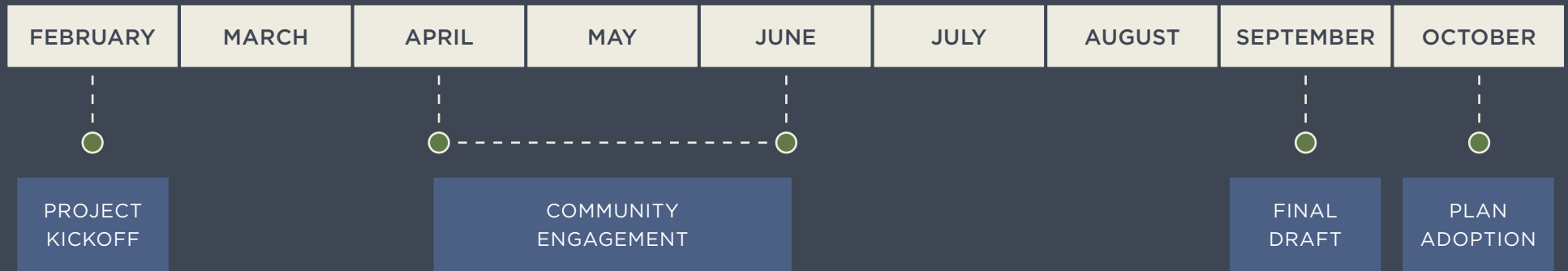
Phase One provided a foundation for the planning process by gathering feedback on the condition and quality of the existing park system through robust community engagement efforts. A park inventory was also completed by ECWRPC staff to document all park facilities.

In Phase Two, ideas and preferences identified by the public during community engagement efforts were incorporated into the recreational needs assessment. ECWRPC staff then worked with key stakeholders to list goals and opportunities that complement the assessment.

In Phase Three, specific and actionable objectives were developed to support the goals and opportunities identified during Phase Two. Throughout this phase, the Park and Recreation Commission, key stakeholders, and City staff were involved in refining the plan recommendations.

Throughout Phase Four, City staff, key stakeholders, and the public reviewed the final plan and provided edits as needed. The Comprehensive Outdoor Recreation Plan update was ultimately approved by the City of Shawano Park and Recreation Commission, Plan Commission, and City Council.

FIGURE 1-2. PLAN TIMELINE



COMMUNITY ENGAGEMENT EFFORTS

The success of any type of local planning effort is often dependent on the involvement, support, and active participation of community residents in the plan’s preparation. The City of Shawano provided opportunities for public input during each phase of the planning process. Figure 1-2 identifies key engagement efforts throughout the update of the CORP. These efforts and events are described in further detail below.

PARK AND RECREATION COMMISSION

ECWRPC staff worked closely with the City of Shawano Park and Recreation Commission throughout the planning process. The Park and Recreation Commission consists of seven members including the Mayor and the Director of Parks, Recreation, and Special Projects. Members provided guidance to ECWRPC staff and reviewed drafts at key milestones during development of the plan. A kickoff meeting with the group was held February 21st, 2024, and a final meeting was held on September 18th, 2024 to approve the CORP update.

WEBSITE AND SURVEY

Community engagement efforts took place from April 16th, 2024 to June 23rd, 2024 via a project website, survey, and interactive map. The survey generated 488 responses, and the interactive map generated 88 comments. Survey feedback is analyzed in detail in Chapter Five: Community Voice.

IN-PERSON EVENTS

ECWRPC staff and City of Shawano staff attended several in-person events to promote the CORP update and gather feedback from community residents. These events and efforts are listed below.

- ▶ Engagement with students at Shawano High School - May 7th, 2024
- ▶ Engagement with third grade students at City Hall - May 20th, 2024
- ▶ Community visioning open house at City Hall - May 28th, 2024
- ▶ Thursdayz @ Franklin pop-up event at Franklin Park - June 20th, 2024

PAST PLANNING EFFORTS

CITY OF SHAWANO COMPREHENSIVE OUTDOOR RECREATION PLAN (ADOPTED 2020)

The City of Shawano has a long history of recreational planning, completing and adopting comprehensive outdoor recreation plans in 1976, 1983, 1992, 2001, 2014, and 2020.¹ These plans provided five-year programs to guide the overall development and expansion of the City's park and recreation system and were designed to meet the changing needs of the community. The four goals represented in the 2020 CORP focused on outdoor recreation, public participation and government cooperation, accessibility, and health.

 https://www.cityofshawano.com/DocumentCenter/View/1282/CShawanoCORP2020-2024_Draft_opt

WISCONSIN STATEWIDE COMPREHENSIVE OUTDOOR RECREATION PLAN (ADOPTED 2019)

The 2019-2023 iteration of the Wisconsin Statewide Comprehensive Outdoor Recreation Plan (SCORP) provides recommendations to guide public outdoor recreation policy and planning decisions, the use of Land and Water Conservation Fund money that comes to Wisconsin, and other Department of Natural Resources (DNR) administered grant programs. This plan includes results from a statewide survey regarding outdoor recreation participation and frequency, as well as opinions about future needs. In addition, the DNR undertook an assessment of recreation opportunities and needs in each region of the state. Top priorities for planning include providing more places for outdoor recreation opportunities via trails, along shorelines, and near urban centers.²

 <https://dnr.wisconsin.gov/topic/fl/PropertyPlanning/Scorp>

CITY OF SHAWANO COMPREHENSIVE PLAN/ BICYCLE AND PEDESTRIAN PLAN (ADOPTED 2021)

The City of Shawano Comprehensive Plan was updated and adopted in 2021.³ Previous comprehensive plans were adopted in 1977, 1988, 1992, 1997, and 2009. These long-range plans cover a variety of topics such as transportation, economic development, land use, and environmental resources. The City of Shawano Bicycle and Pedestrian Plan was adopted in tandem with the 2021 Comprehensive Plan. This plan focuses on the expansion and appropriate placement of bicycle and pedestrian facilities. It is important to recognize that parks and recreation facilities are elements of a larger, interconnected system that also includes streets, museums, libraries, stormwater systems, and other civic infrastructure.⁴

 <https://www.cityofshawano.com/DocumentCenter/View/1957/Shawano-Comp-Plan-2040-with-Maps?bidId=>

CITY OF SHAWANO DOWNTOWN MASTER PLAN (ADOPTED 2018)

The City of Shawano Downtown Master Plan was completed in 2018, highlighting the vision, goals, strategies, and recommendations for the downtown area.⁵ The community sought a plan for an active and dynamic downtown environment that would emphasize redevelopment and utilization of vacant and underutilized properties. The goals identified in the plan are connect, compete, collaborate, preserve, and promote. Recommendations include connecting the downtown to the Mountain Bay State Trail and activating underutilized spaces through placemaking strategies like parklets and pop-up events.

 <https://www.cityofshawano.com/DocumentCenter/View/2090/Downtown-Master-Plan-08162018---Final>

ABOUT SHAWANO

PHYSICAL CHARACTERISTICS

The City of Shawano is the county seat and largest community in Shawano County. Located 35 miles west of Green Bay and 150 miles north of Milwaukee, Shawano is served by STH 29, 22, 47, and 55. Surrounded by the four towns of Belle Plaine, Richmond, Waukechon, and Wescott, the City's total incorporated area is 6.7 square miles. The City of Shawano has significant water resources with the Wolf River on its west side, the Shawano Lake Outlet on its north side, and Shawano Lake to the east. These waterways are heavily utilized by both residents and tourists.

Shawano's commercial core is located in the center of the City and continues to see increased growth and investment. The City has a large Community Mixed-Use Zone which allows for multiple types of uses and denser developments. Recent residential growth has generally been concentrated in the southeastern part of the City. An abandoned rail line, which crossed the City in an east-west direction, has now been converted to the Mountain-Bay State Recreational Trail between the Green Bay and Wausau areas. An overview of the community is shown in Map 1-2.

SOCIAL CHARACTERISTICS

The City of Shawano has a diverse, slowly growing population, with 9,212 total people and 3,737 total households. Shawano has grown by 9.3% since 2000, equating to 865 people. This steady growth rate is on par with the state as a whole. Additionally, 59% of the housing in the City is owner occupied. This is below the state average of 67.7% but on par with other urbanized communities. Shawano has a notable retail sale per capita of \$32,004 when compared with the state average of \$15,840. While the retail sales per capita is high, the median household income of Shawano trends lower than the state average, at \$54,848 and \$72,458 respectively. Additional demographic statistics for the City are provided in Figure 1-3.

MAP 1-1. CITY OF SHAWANO LOCATION

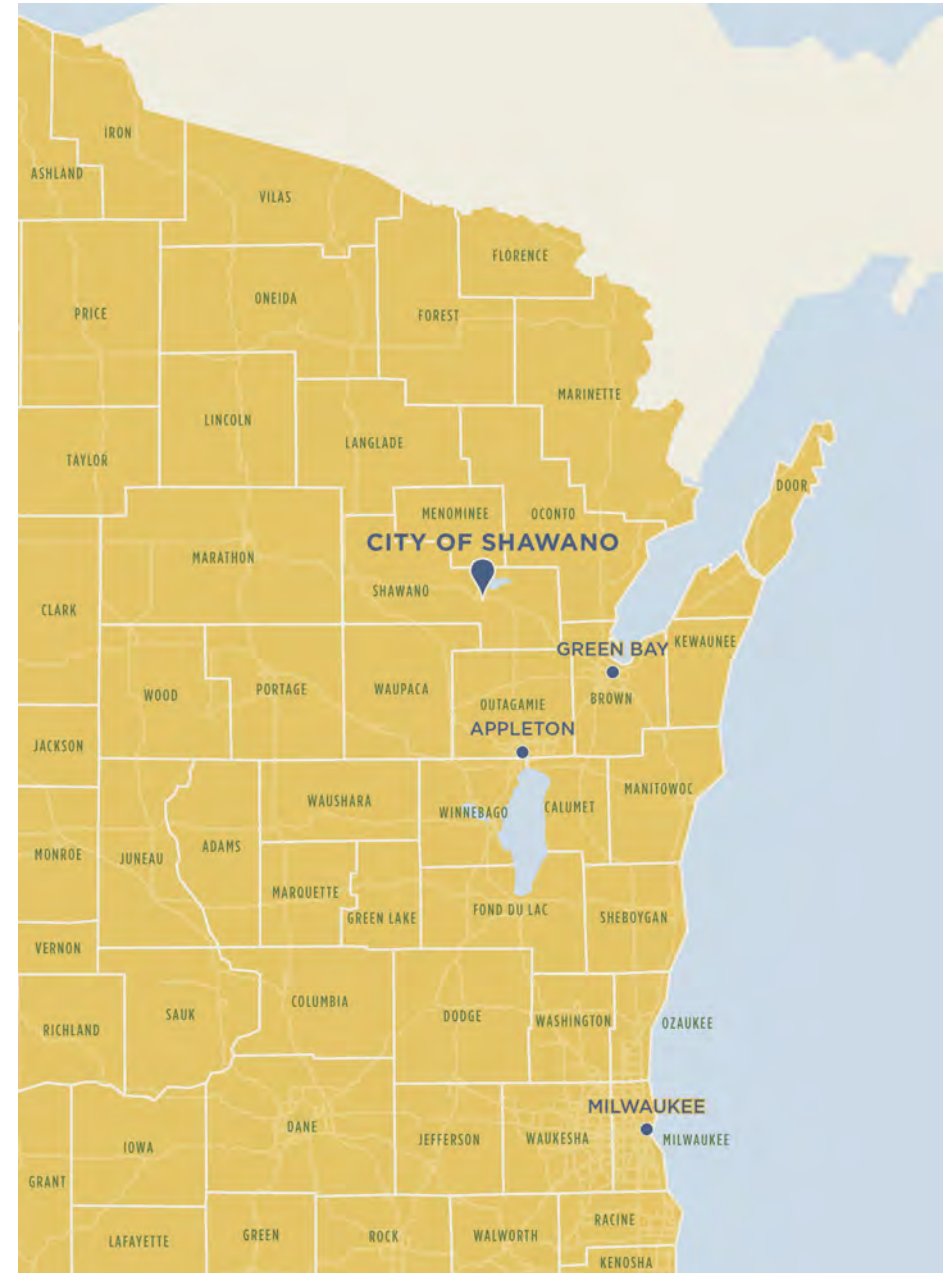
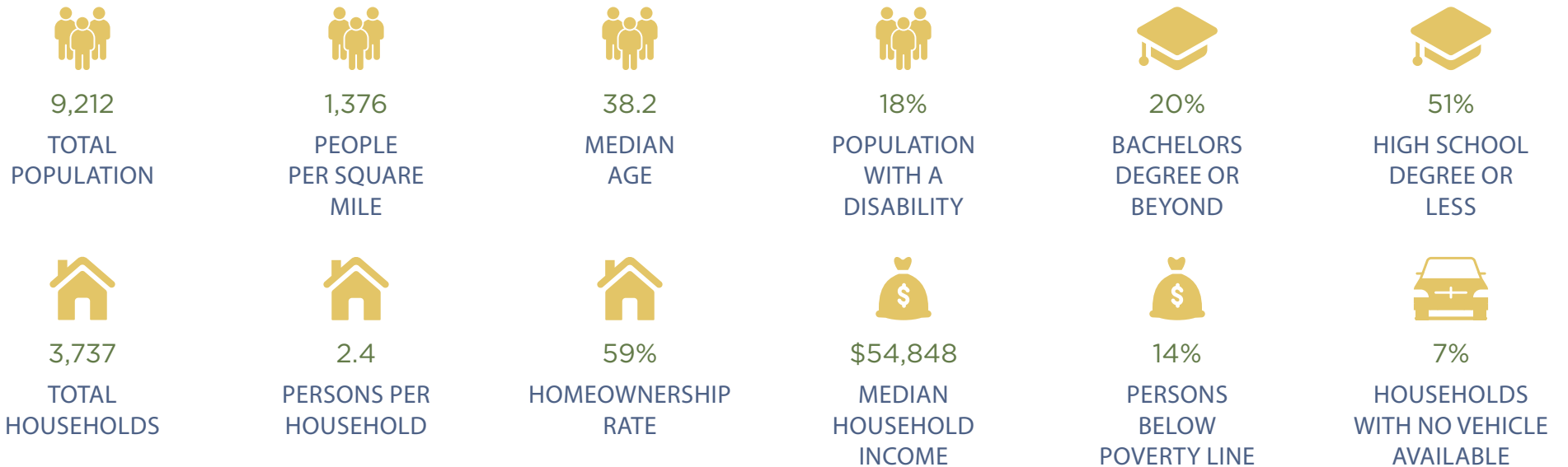
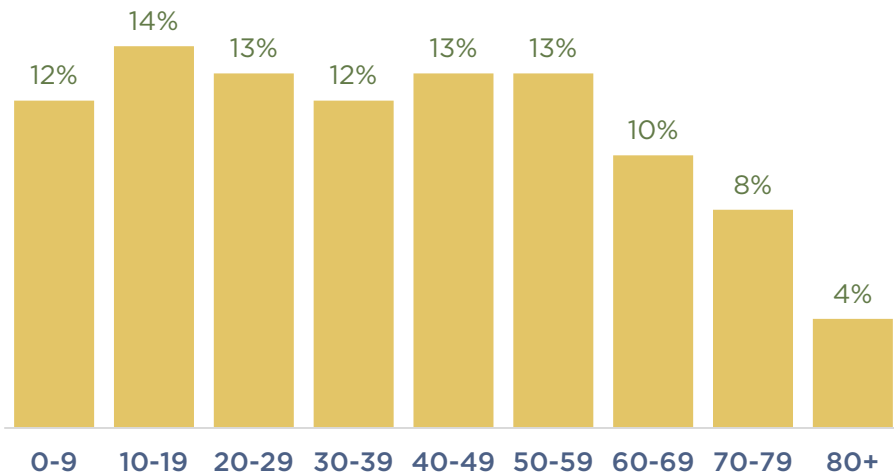


FIGURE 1-3. CITY OF SHAWANO QUICK FACTS

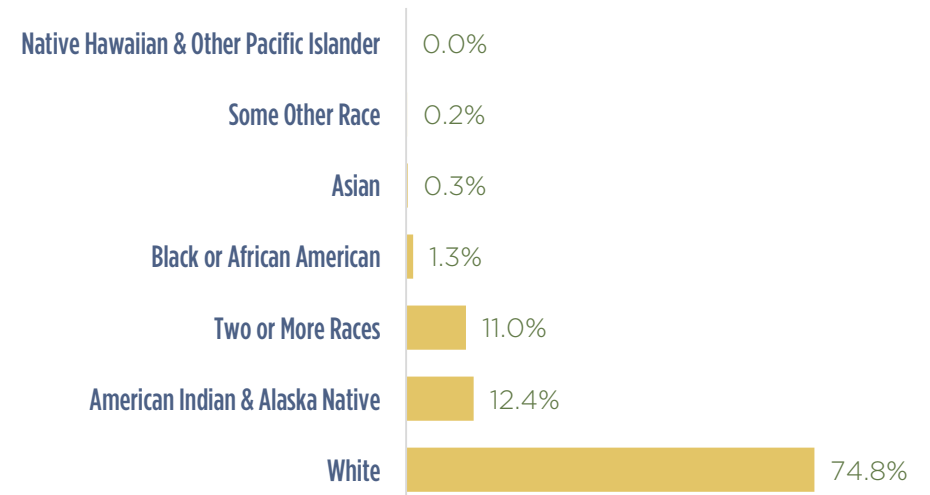


POPULATION BY AGE RANGE

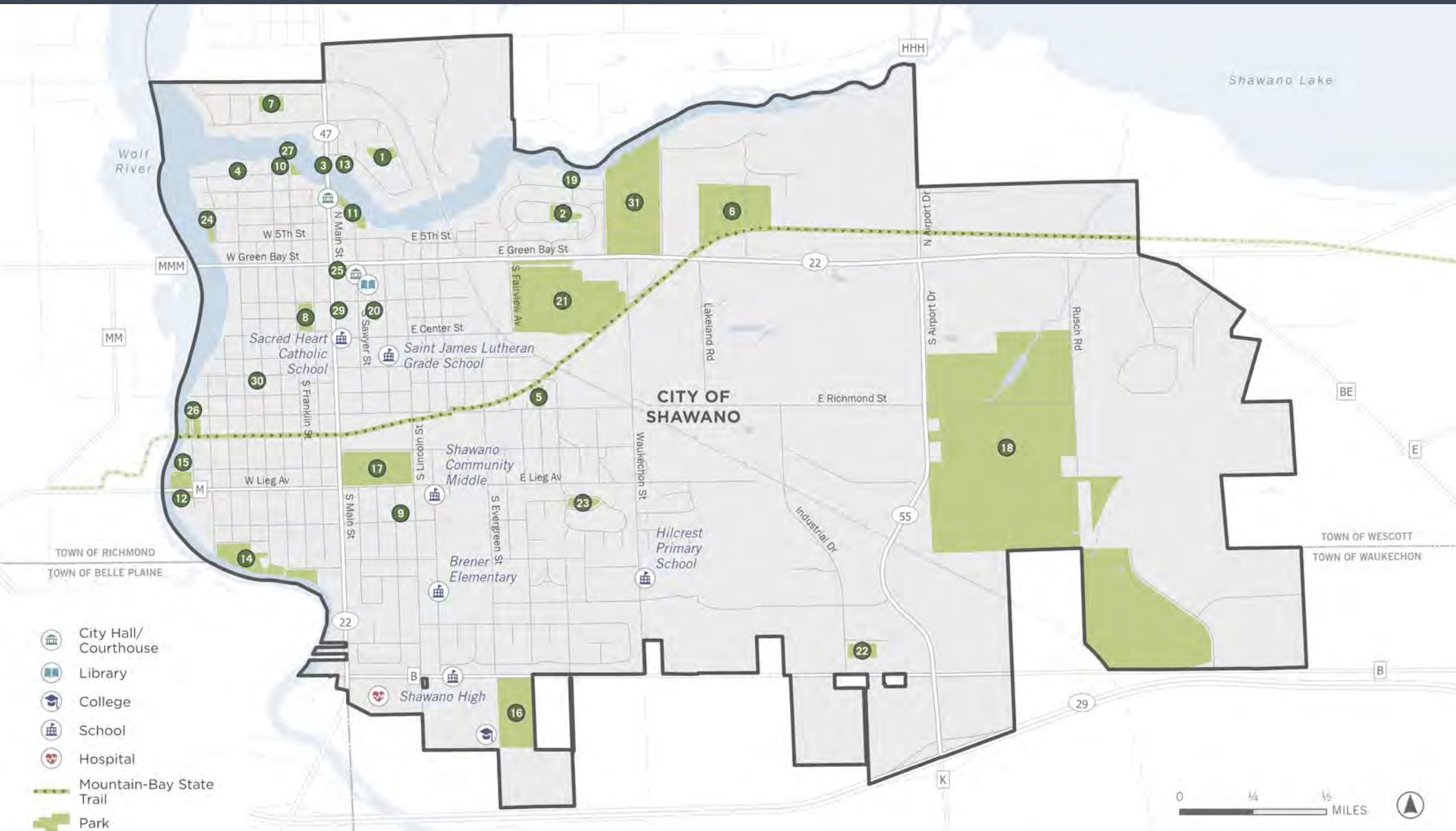


Source: ACS 2022 5-Year Estimates

POPULATION BY RACE



MAP 1-2. COMMUNITY OVERVIEW



- City Hall/
Courthouse
- Library
- College
- School
- Hospital
- Mountain-Bay State
Trail
- Park



- | | | | | | | |
|-----------------------------|-------------------------|-------------------------------|--|-------------------------------------|----------------------------------|-----------------------------|
| 1 Alpine Shores Park | 6 Eberlein Park | 11 Huckleberry Harbor | 16 Martzke Park | 20 Recreation Center | 24 Smalley Park | 30 Water Tower Park |
| 2 Arlington Park | 7 Feivor Park | 12 Judd Park | 17 Memorial Athletic Field | 21 Shawano County Fair | 25 Spirit of Shawano Park | 31 Woodlawn Cemetery |
| 3 Channel Park | 8 Franklin Park | 13 Kleeman Family Park | 18 Murray Creek Nature
Conservancy | 22 Shawano Dog Park
(ARF) | 26 Sturgeon Park | |
| 4 Circle Drive Park | 9 Hartman Park | 14 Kuckuk Park | 19 Pearl Court Park | 23 Shrank's Forest Hill Park | 27 Sunset Island | |
| 5 Co-op Park | 10 Heritage Park | 15 Lieg Park | | | 29 The Naberhood | |

CHAPTER ONE ENDNOTES

¹ *City of Shawano Comprehensive Outdoor Recreation Plan 2020-2024*. City of Shawano. 2020. https://www.cityofshawano.com/DocumentCenter/View/1282/CShawanoCORP2020-2024_Draft_opt

² *Wisconsin Statewide Comprehensive Outdoor Recreation Plan 2019-2023*. Wisconsin Department of Natural Resources. 2019. <https://dnr.wisconsin.gov/topic/fl/PropertyPlanning/Scorp>

³ *City of Shawano Comprehensive Plan Update 2040*. City of Shawano. 2021. <https://www.cityofshawano.com/DocumentCenter/View/1957/Shawano-Comp-Plan-2040-with-Maps?bidId=>

⁴ Barth, David. *A New Approach to Parks and Recreation System Planning*. National Recreation and Park Association. 2020. <https://www.nrpa.org/parks-recreation-magazine/2020/november/a-new-approach-to-parks-and-recreation-system-planning/>

⁵ *City of Shawano Downtown Master Plan*. City of Shawano. 2018. <https://www.cityofshawano.com/DocumentCenter/View/2090/Downtown-Master-Plan-08162018--Final>





2

RECREATIONAL RESOURCES

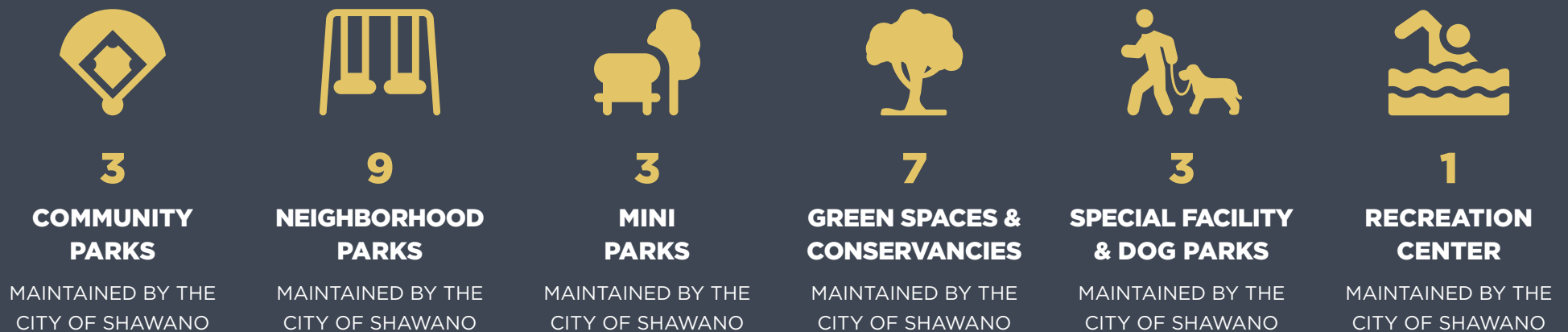
RECREATIONAL RESOURCES

EXISTING PARK FACILITIES

From splash pads to sports courts, the City of Shawano maintains a total of 25 parks and green spaces. The City also boasts natural resources like the Wolf River, which provides water-based opportunities such as fishing, kayaking, boating, and a beach at Smalley Park. Shawano's recreation center offers additional opportunities to swim and use gym equipment indoors.

Woodland areas and the Murray Creek Nature Conservancy enrich the natural landscape. These resources, along with a network of trails, enhance the City's recreational offerings, foster a thriving community, and ensure accessible and diverse outdoor experiences for all residents. Figure 2-1 below summarizes the park system in the City.

FIGURE 2-1. CITY OF SHAWANO PARK AND RECREATION FACILITIES QUICK FACTS



PARK CLASSIFICATIONS

The National Recreation and Park Association’s (NRPA) Park, Recreation, Open Space and Greenway Guidelines offer standard definitions for park classifications.¹ However, much has changed since the NRPA published this document in 1996. Today, each community must determine its own standards, level of service (LOS) metrics, and long-range vision for its parks and recreation system based on community issues, values, needs, priorities and available resources.² Table 2-1 summarizes Shawano’s park classification system. The definitions are generally modified from the NRPA classifications to meet the City’s needs.

Individual park classifications should be reviewed and adjusted if necessary when new facilities are added, parklands are purchased, or recreation programs are changed. Also identified below are level of service standards for both walking and driving. A park’s level of service is the accepted distance that the average park user will travel from their home to get to that recreation destination. LOS standards can help measure how accessible the park system is to a community’s residents. Park service areas and the park system are analyzed in more detail in Chapter 3: Recreational Needs.

TABLE 2-1. CITY OF SHAWANO PARK CLASSIFICATION DEFINITIONS

Classification	Definition	Size	Level of Service
Community Park	Designed to serve a broad segment of the community and provide a wide range of recreational activities. Often host organized sports leagues and are generally located in areas that are easily accessible near major roads and trails.	15+ acres	Walking: 0.5 miles Driving: 2 miles
Neighborhood Park	Basic unit of the park system, intended to serve the immediate neighborhood and a variety of age groups. Often include playground facilities, open play areas, shelters, small sports courts, and toilet facilities.	1 - 15 acres	Walking: 0.25 miles Driving: 0.5 miles
Mini Park	Serve a very localized area, offering small, accessible recreational spaces for nearby residents. Facilities include small playgrounds, open play areas, and benches. Amenities are limited due to size, and off-street parking is not necessary.	0.25 - 1 acres	Walking: 0.25 miles Driving: 0.25 miles
Green Space	Properties designated as parks that have few or no built facilities, but provide public open space to the local neighborhood. May include benches, open play areas, fishing access, or trails.	0.25 - 5 acres	Walking: 0.25 miles Driving: 0.25 miles
Special Facility Park	Designed to cater to specific activities or interests beyond general recreational purposes. Often include specialized equipment or infrastructure such as boat launches, kayak/canoe launches, skateboarding equipment, or docks.	1 - 5 acres	Walking: 0.25 miles Driving: 2 miles
Dog Park	Designated area where dogs can exercise and socialize off-leash in a controlled environment. Facilities often include fenced-in areas, dog agility equipment, waste disposal stations, and shaded areas.	1 - 15 acres	Walking: 0.5 miles Driving: 2 miles
Nature Conservancy	Lands designated for the protection of the natural environment and wildlife habitat. Personal recreation is a secondary objective with limited to no developed facilities.	5+ acres	Walking: 0.5 miles Driving: 2 miles
Recreation Center	Designed to provide a range of recreational, social, and educational activities for the broader community. Indoor and outdoor amenities are provided such as sports courts, pools, and exercise equipment.	1 - 5 acres	Walking: 0.5 miles Driving: 10 miles

COMMUNITY PARKS



DON MARTZKE SPORTS PARK

234 County Road B

18.4 acres

 Park to Park Loop Connection

- ▶ Ball Fields (3)
- ▶ Park Shelter w/ Concessions
- ▶ Picnic Tables
- ▶ Seasonal Restrooms
- ▶ Playground
- ▶ Open/Natural Area
- ▶ Walking Trails in Woods
- ▶ 9-Hole Disc Golf Course



EBERLEIN PARK

107 Eberlein Park Dr.

28.0 acres

 Park to Park Loop Connection

 Mountain-Bay Trail Connection

- ▶ Park Shelter w/ Concessions
- ▶ Picnic Tables & Grills
- ▶ Playground
- ▶ Soccer Fields
- ▶ Born Learning Trail
- ▶ Open Space
- ▶ Walking & Biking Trails
- ▶ Mountain-Bay Trail Access
- ▶ Seasonal Restrooms



MEMORIAL ATHLETIC FIELD

909 S. Lincoln St.

17.4 acres

 Park to Park Loop Connection

 Public WiFi

- ▶ Softball Diamonds (Two Lighted, One Unlighted)
- ▶ Lighted Baseball Diamond & Lighted Little League Diamond
- ▶ Batting Cages
- ▶ Park Shelter w/ Concessions
- ▶ Lighted Basketball Court
- ▶ Sand Volleyball Court
- ▶ Seasonal Restrooms
- ▶ Picnic Area & Open Play Area
- ▶ Splashpad
- ▶ Two Playgrounds (One ADA Accessible Playground)
- ▶ Purple Heart Monument

NEIGHBORHOOD PARKS



ARLINGTON PARK

300 N. Humphrey Circle

3.6 acres

 Park to Park Loop Connection

 Public WiFi

- ▶ Park Shelter
- ▶ Grills
- ▶ Picnic Tables
- ▶ Playground
- ▶ Basketball Courts
- ▶ Open Space
- ▶ Tennis and Pickleball Courts (2)
- ▶ Seasonal Restrooms



CO-OP PARK

1001 E. Richmond

2.3 acres

 Park to Park Loop Connection

 Mountain-Bay Trail Connection

- ▶ Playground
- ▶ Park Shelter
- ▶ Picnic Area
- ▶ ADA Accessible Features
- ▶ Basketball Court
- ▶ Paved Exercise Trail
- ▶ Open Space



FEIVOR PARK

300 Mills St.

2.8 acres

- ▶ Open Space
- ▶ Picnic Tables
- ▶ Playground

NEIGHBORHOOD PARKS



FRANKLIN PARK

235 S. Washington

2.9 acres

📶 Public WiFi

- ▶ Event Space
- ▶ Amphitheatre
- ▶ Sitting Areas
- ▶ Pathways
- ▶ Water Feature
- ▶ Native Plantings
- ▶ WWI Monument
- ▶ Seasonal Restrooms



KLEEMANN FAMILY PARK

180 Alpine Dr.

1.2 acres

- ▶ Playground
- ▶ Fishing Pier & Water Access
- ▶ Canoe/Kayak Launch
- ▶ Basketball Court
- ▶ Picnic Area
- ▶ Open Space



KUCKUK PARK

700 Oak Dr.

10.8 acres

🗺️ Park to Park Loop Connection

📶 Public WiFi

- ▶ Basketball Court
- ▶ Pickleball Courts (4)
- ▶ Fishing Piers & Water Access
- ▶ Park Shelter
- ▶ Seasonal Restrooms
- ▶ Picnic Tables
- ▶ ADA Accessible Playground
- ▶ Walking & Biking Trail
- ▶ Native Plantings
- ▶ Born Learning Trail

NEIGHBORHOOD PARKS



SCHRANK'S FOREST HILL PARK

600 Prospect Cir.

2.2 acres

 Park to Park Loop Connection

- ▶ Basketball Court
- ▶ Picnic Tables
- ▶ Playground
- ▶ Open Space



SMALLEY PARK

211 Riverside Dr.

2.2 acres

 Park to Park Loop Connection

 Public WiFi

- ▶ Beach Area w/ Outside Shower
- ▶ Ski Shark Performance Area
- ▶ Walking Trail
- ▶ Native Plantings
- ▶ Amphitheater
- ▶ Basketball Court
- ▶ Play Equipment
- ▶ Park Shelter w/ Concessions
- ▶ Picnic Tables
- ▶ Seasonal Restrooms



STURGEON PARK

801 S. Water St.

2.2 acres

 Park to Park Loop Connection

 Mountain-Bay Trail Connection

 Public WiFi

- ▶ Park Shelter
- ▶ Fishing & Water Access
- ▶ Walking & Biking Trail
- ▶ Picnic Tables

MINI PARKS



CHANNEL PARK

505 N. Main St.

0.4 acres

- ▶ Fishing & Water Access
- ▶ Benches
- ▶ Picnic Table



CIRCLE DRIVE PARK

122 Circle Dr.

0.4 acres

 Park to Park Loop Connection

- ▶ Playground
- ▶ Open Play Area



THE NABERHOOD

214 S. Main St.

0.7 acres

- ▶ Picnic Tables
- ▶ Water Feature
- ▶ Seating
- ▶ Seasonal Restrooms
- ▶ Play Equipment
- ▶ Stage
- ▶ Fire Pits

GREEN SPACES



ALPINE SHORES PARK

286 Northridge Dr.

2.7 acres

- ▶ Open Space
- ▶ GRACE Trail
- ▶ Wooded Area



HARTMAN PARK

980 S. Andrews St.

0.7 acres

 Park to Park Loop Connection

- ▶ Open Space
- ▶ Wooded Area
- ▶ Park Benches



LIEG PARK

1013 S. Water St.

4.2 acres

 Park to Park Loop Connection

- ▶ Open Space
- ▶ Community Garden
- ▶ Fishing & Water Access
- ▶ Walking & Biking Trail

GREEN SPACES



PEARL COURT PARK

501 Fairview Way

0.9 acres

 Park to Park Loop Connection

- ▶ Open Space
- ▶ Water Access
- ▶ Picnic Area



SPIRIT OF SHAWANO PARK

100 & 101 E. Green Bay St.

0.2 acres

- ▶ Landscaped Statuary Areas
- ▶ Focal Point for Visitors and Downtown Shoppers



WATER TOWER PARK

605 S. Smalley St.

0.3 acres

- ▶ Open Space

NATURE CONSERVANCY AND RECREATION CENTER



MURRAY CREEK NATURE CONSERVANCY

1500 E. County Rd. B

309.7 acres

 Park to Park Loop Connection

▶ Natural Site

▶ Bow Hunting Allowed by Permit



RECREATION CENTER

220 E. Division St.

1.2 acres

▶ Outdoor Basketball Court

▶ Picnic Tables

▶ Indoor Fitness Area

▶ Indoor Racquetball Courts (2)

▶ Indoor Swimming Pool

DOG PARK AND SPECIAL FACILITY PARKS



ANIMAL RECREATION FACILITY (DOG PARK)

1420 Jaycee Ct.
3.0 acres

- ▶ Open Space
- ▶ Open-Sided Shelter
- ▶ Picnic Tables



HUCKLEBERRY HARBOR

220 N. Sawyer St.
3.6 acres

- 🔗 Park to Park Loop Connection
- 📶 Public WiFi

- ▶ Park Shelter w/ Concessions
- ▶ Boat Launch & Transient Docking
- ▶ ADA Canoe/Kayak Launch
- ▶ Fishing & Water Access
- ▶ Open Space
- ▶ Picnic Tables
- ▶ Seasonal Restrooms
- ▶ Paved Parking for Trailered Vehicles



JUDD PARK

1121 S. Water St.
2.2 acres

- 🔗 Park to Park Loop Connection

- ▶ Boat Launch
- ▶ Fishing & Water Access
- ▶ Open Space
- ▶ Picnic Tables
- ▶ Playground

SCHOOLS



HILLCREST PRIMARY SCHOOL

1410 S. Waukechon St.

 Park to Park Loop Connection



SHAWANO COMMUNITY MIDDLE SCHOOL

1050 S. Union St.

 Park to Park Loop Connection



OLGA BRENER SCHOOL

1300 S. Union St.



SHAWANO COMMUNITY HIGH SCHOOL

220 County Road B

 Park to Park Loop Connection

TABLE 2-2. CITY OF SHAWANO PARK MATRIX

	Acres	Ball Diamonds	Basketball Courts	Boat Launch	Disc Golf Course	Facility Rentals	Fishing	Natural Site	Open Space	Pickleball Courts	Picnic Shelter	Picnic Tables	Play Equipment	Restrooms (Seasonal)	Sand Volleyball Courts	Soccer Fields	Tennis Courts	Splash Pad	Walking/ Biking Trail	Waterfront
Community Parks																				
Eberlein Park	28.0					X		X	X		X	X	X	X		X			X	
Memorial Park	17.4	X	X			X			X		X	X	X	X	X			X		
Martzke Park	18.4	X			X	X		X	X		X	X	X	X						
Neighborhood Parks																				
Arlington Park	3.6		X			X			X	X	X	X	X	X			X			
Co-Op Park	2.3		X			X			X		X	X	X							
Feivor Park	2.8								X		X	X	X							
Franklin Park	2.9					X			X		X	X		X				X		
Kleemann Family Park	1.2		X				X		X			X	X							X
Kuckuk Park	10.8		X			X	X		X	X	X	X	X	X					X	X
Shrank's Forest Hill Park	2.2		X						X			X	X							
Smalley Park	2.2		X			X	X				X	X	X	X					X	X
Sturgeon Park	2.2					X	X				X								X	X
Mini Parks																				
Channel Park	0.4						X					X								X
Circle Drive Park	0.4								X			X	X							
The Naberhood	0.7					X						X	X	X				X		
Green Spaces																				
Alpine Shores Park	2.7							X											X	
Hartman Park	0.7								X											
Leig Park	4.2						X	X	X			X							X	X
Murray Creek Nature Conservancy	309.7							X												
Pearl Court Park	0.9							X	X											X
Spirit of Shawano Park	0.2																			
Water Tower Park	0.3								X											
Dog Park and Special Facilities																				
Animal Recreation Facility (Dog Park)	3.0								X		X	X								
Huckleberry Harbor	2.3			X		X	X		X		X	X		X						X
Judd Park	1.5			X			X		X		X	X								X

EXISTING BICYCLE AND PEDESTRIAN FACILITIES

TRAILS, SIDEWALK, AND PARK TO PARK LOOPS

Overall, there are 1.8 miles of paved trail, 3.1 miles of unpaved trail, and 42.1 miles of sidewalk in the City of Shawano boundary. The west side of the City is crisscrossed by a robust network of sidewalk. The central and east areas of the City are largely unserved by sidewalk. Additionally, the Mountain-Bay State Trail, one of the longest rail-trails in Wisconsin, runs through Shawano. This 83-mile trail connects Wausau to Green Bay. The local Sturgeon Trail links Sturgeon Park to Kuckuk Park and meanders along the riverfront.

Shawano Pathways collaborated with the City of Shawano Parks staff to create a set of walking and biking loops that guide participants through parks via existing trails and low-volume streets. Park to Park Loop wayfinding signage is found throughout the City. Shawano's bicycle and pedestrian facilities are displayed in Map 2-1.

EXISTING NATURAL RESOURCES

WATER AND WOODLANDS

A wide variety of outdoor recreational opportunities are available in and around the City of Shawano. Shawano Lake and the Wolf River comprise the primary surface water in the Shawano area. The Shawano Lake outlet stream, which flows out of Shawano Lake into Wolf River Pond, enables boaters, fishermen, and swimmers to move conveniently between the lake and river. Several scattered and heavily wooded areas can be found throughout the City. The Shawano School District owns two parcels totaling twelve acres designated for nature study. Other large forested tracts are found in conjunction with the Industrial Park on the City's east side and along the outlet channel. Map 2-2 highlights the natural resources in the City of Shawano.



BICYCLE AND PEDESTRIAN FACILITY DEFINITIONS

BIKE LANE

A bike lane is a portion of the roadway which has been designated by striping, signing and pavement marking for the preferential or exclusive use by bicyclists.

SIDEWALKS

Sidewalks are a space for pedestrian travel within the public right-of-way that is separated from roadway vehicles. The terrace provides a buffer zone between users and vehicles.

SHARED USE PATH

A shared use path is an off-road facility that is strictly designed for both bicyclists and pedestrians. Typically, widths of these facilities range from 10-14 feet.

CROSSWALK

Pedestrian roadway facilities should clearly indicate to pedestrians where and when they should cross the street. It is equally important crosswalks are clearly visible to motorists entering a pedestrian area.

CURB RAMP CUT

Curb ramps cut through a curb (or are built up to it) to provide an accessible route that people can use to enter a crosswalk, cross the street, or access a bus stop (where walkways meet at a curb).

LANDSCAPING AND STREET FURNITURE

Landscaping along the street provides separation between motorists and pedestrians, reduces the visual width of the roadways, and beautifies.

LIGHTING

Pedestrian lighting increases drivers' visibility of pedestrians, promotes perceived personal security, illuminates potential hazards, and creates vibrant and inviting streetscapes.

PEDESTRIAN REFUGE ISLAND

Pedestrian refuge islands are spaces that provide a waiting area for those unable to completely cross the street during a signal crossing phase.

PEDESTRIAN COUNTDOWN TIMERS

Pedestrian countdown timers improve safety by providing information to assist pedestrians with crossing decisions, sometimes with pushbuttons.

RAPID FLASHING BEACON

The Rapid Flashing Beacon is a device used in combination with pedestrian warning signs to provide a high-visibility strobe-like warning to drivers when pedestrians use a crosswalk.

SIGNED SHARED ROADWAYS

Signed shared roadway (bike route) is simply a street/road that has been identified as a preferred bicycle route.

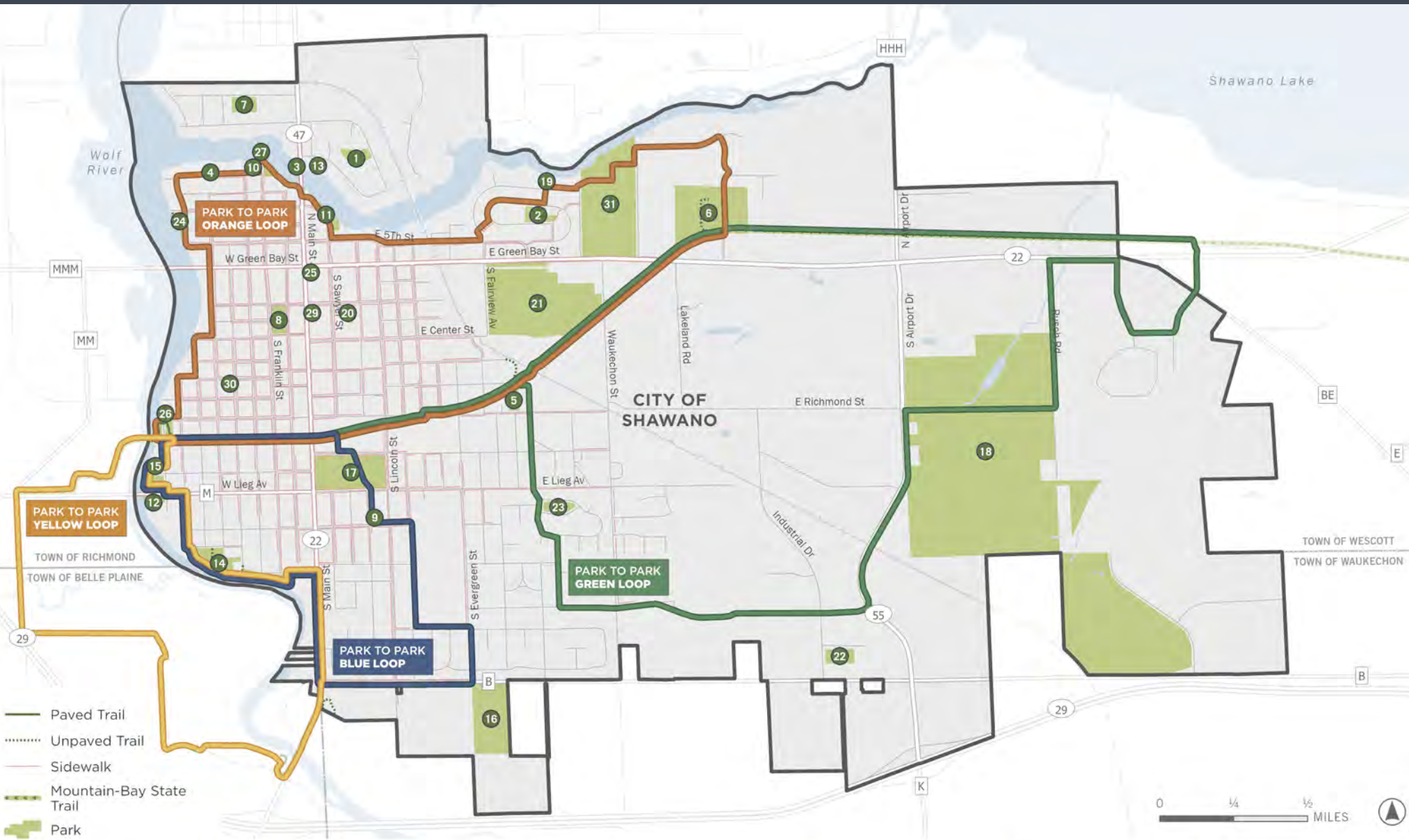
PAVED SHOULDERS

A paved shoulder accommodates bicyclists alongside travel lanes. Width varies according to the adjacent travel lane and whether or not a rumble strip is present.

SHARED LANE MARKINGS

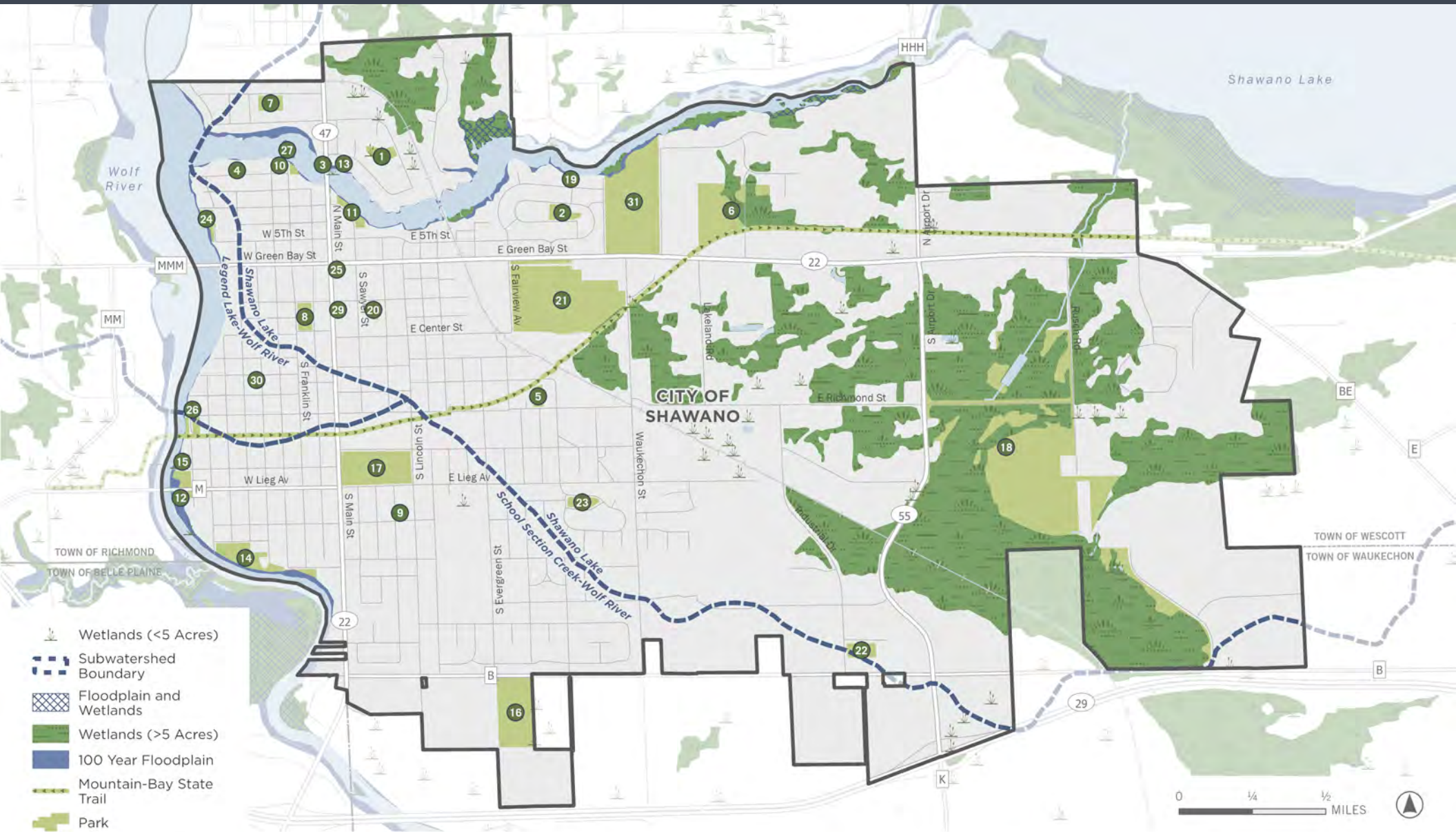
An alternative to the bike lane designation is the sharrow, or lane designation that informs bicyclists and motorists to share the road.

MAP 2-1. BICYCLE AND PEDESTRIAN FACILITIES



- | | | | | | | |
|----------------------|------------------|------------------------|------------------------------------|------------------------------|---------------------------|----------------------|
| 1 Alpine Shores Park | 6 Eberlein Park | 11 Huckleberry Harbor | 16 Martzke Park | 20 Recreation Center | 24 Smalley Park | 30 Water Tower Park |
| 2 Arlington Park | 7 Feivor Park | 12 Judd Park | 17 Memorial Athletic Field | 21 Shawano County Fair | 25 Spirit of Shawano Park | 31 Woodlawn Cemetery |
| 3 Channel Park | 8 Franklin Park | 13 Kleeman Family Park | 18 Murray Creek Nature Conservancy | 22 Shawano Dog Park (ARF) | 26 Sturgeon Park | |
| 4 Circle Drive Park | 9 Hartman Park | 14 Kuckuk Park | 19 Pearl Court Park | 23 Shrank's Forest Hill Park | 27 Sunset Island | |
| 5 Co-op Park | 10 Heritage Park | 15 Lieg Park | | | 29 The Naberhood | |

MAP 2-2. NATURAL RESOURCES



- | | | | | | | |
|----------------------|------------------|------------------------|------------------------------------|------------------------------|---------------------------|----------------------|
| 1 Alpine Shores Park | 6 Eberlein Park | 11 Huckleberry Harbor | 16 Martzke Park | 20 Recreation Center | 24 Smalley Park | 30 Water Tower Park |
| 2 Arlington Park | 7 Feivor Park | 12 Judd Park | 17 Memorial Athletic Field | 21 Shawano County Fair | 25 Spirit of Shawano Park | 31 Woodlawn Cemetery |
| 3 Channel Park | 8 Franklin Park | 13 Kleeman Family Park | 18 Murray Creek Nature Conservancy | 22 Shawano Dog Park (ARF) | 26 Sturgeon Park | |
| 4 Circle Drive Park | 9 Hartman Park | 14 Kuckuk Park | 19 Pearl Court Park | 23 Shrank's Forest Hill Park | 27 Sunset Island | |
| 5 Co-op Park | 10 Heritage Park | 15 Lieg Park | | | 29 The Naberhood | |

CHAPTER TWO ENDNOTES

¹ Mertes, James and Hall, James. *Park, Recreation, Open Space and Greenway Guidelines*. National Recreation and Park Association. 1996. https://books.google.com/books/about/Park_Recreation_Open_Space_and_Greenway.html?id=U3FRAAAAMAAJ

² Barth, David. *A New Approach to Parks and Recreation System Planning*. National Recreation and Park Association. 2020. <https://www.nrpa.org/parks-recreation-magazine/2020/november/a-new-approach-to-parks-and-recreation-system-planning/>



The background of the slide is a photograph of an outdoor tennis court. The court is surrounded by a chain-link fence. In the distance, there are several large, leafy trees and some residential buildings. The entire image is covered with a semi-transparent green filter. In the center of the image, there is a white circle containing the number '3'.

3

RECREATIONAL NEEDS

RECREATIONAL NEEDS

ASSESSING NEED

The City of Shawano’s parks and recreational facilities serve not only Shawano’s residents, but also surrounding rural areas and a robust tourism industry. The demographics of the City have shifted over the past decades, and its population is projected to grow through 2040. Therefore, this comprehensive recreational needs assessment will outline the evolving needs in the community.

A variety of data is analyzed in this chapter to identify key recreational needs for the City of Shawano. Figure 3-1 lists the six components of the recreational needs assessment. These components include a population assessment, facilities assessment, systems assessment, accessibility assessment, health assessment, and community voice overview.

FIGURE 3-1. RECREATIONAL NEEDS ASSESSMENT COMPONENTS



POPULATION ASSESSMENT

HISTORIC AND PROJECTED POPULATION

Per the ACS 2022 5-Year Estimates, the current population of the City of Shawano is 9,212 people. From 2000 to 2020, the City experienced modest growth, as the population increased just over 11% according to U.S. Census data. The Department of Administration (DOA) predicts this trend will continue through 2040 with an additional 11% increase in population. It is important to note the DOA projections do not take the 2020 U.S. Census results into consideration and were published in 2013. For example, the projected 2020 population for the City was 9,665 people, but the actual 2020 population was 9,243 people. While it is likely the City of Shawano will continue to develop, the DOA projections may be higher than what is actually experienced. Table 3-1 and Figure 3-2 show population trends for the City of Shawano and comparable communities.

AGE TRENDS

The City of Shawano has a younger population than the County as a whole. Per the ACS 2022 5-Year Estimates, 26% of the City's residents are under the age of 20. The City's median age has decreased slightly from 39.0 in 2010 to 38.2 in 2022. However, in the same time period, the median age for Shawano County increased from 42.2 to 45.4. Of the communities analyzed in Figure 3-3, Shawano's median age is the lowest.

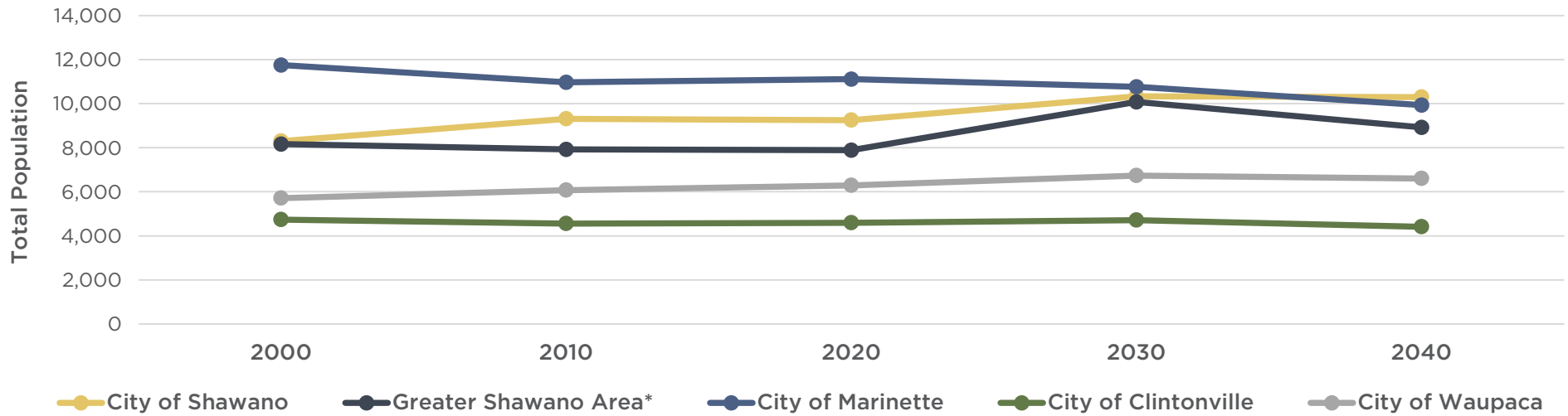
The City of Shawano is the largest community in Shawano County, and it is common for people from rural areas to utilize the City's parks. In fact, 42% of the County's population is located in Shawano or the Greater Shawano Area (Table 3-1). Therefore, recreational facilities should accommodate the unique needs of both children and older adults.

TABLE 3-1. POPULATION TRENDS AND PROJECTIONS (2000-2040)

		City of Shawano		Greater Shawano Area*		City of Marinette		City of Clintonville		City of Waupaca		Shawano County		State of Wisconsin	
Year	Source	Total Pop.	% Change	Total Pop.	% Change	Total Pop.	% Change	Total Pop.	% Change	Total Pop.	% Change	Total Pop.	% Change	Total Pop.	% Change
2000	Census	8,298	-	8,167	-	11,749	-	4,736	-	5,710	-	40,664	-	5,363,715	-
2010	Census	9,305	12.14%	7,923	-2.99%	10,968	-6.65%	4,559	-3.74%	6,069	6.29%	41,949	3.16%	5,686,986	6.03%
2020	Census	9,243	-0.67%	7,891	-0.40%	11,119	1.38%	4,591	0.70%	6,282	3.51%	40,881	-2.55%	6,005,080	5.59%
2030	DOA	10,330	11.76%	10,078	27.72%	10,770	-3.14%	4,710	2.59%	6,735	7.21%	46,305	13.27%	6,375,910	6.18%
2040	DOA	10,300	-0.29%	8,925	-11.44%	9,935	-7.75%	4,415	-6.26%	6,595	-2.08%	45,900	-0.87%	6,491,635	1.82%

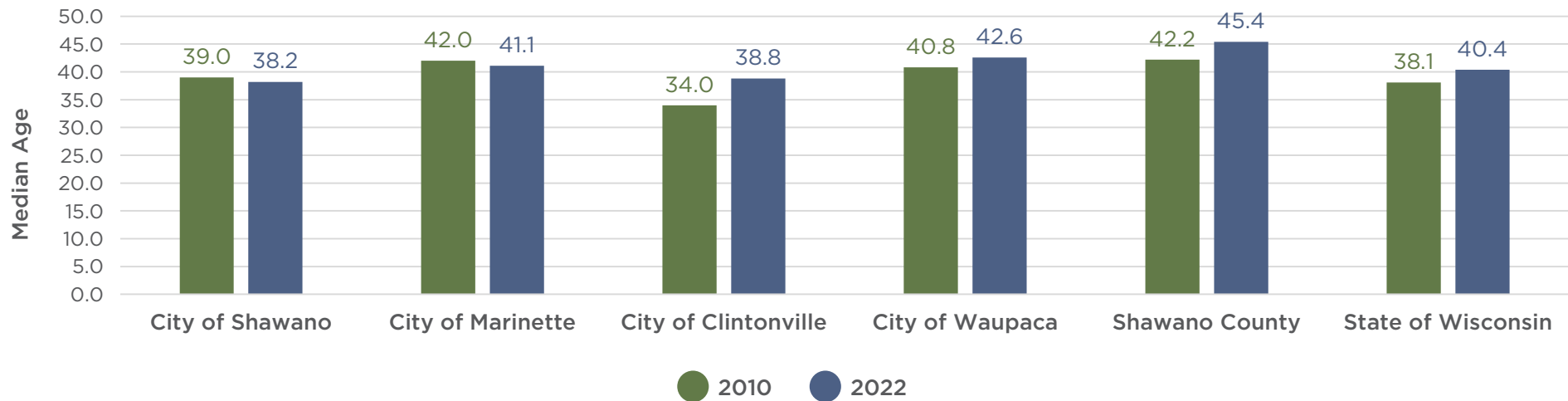
*Towns of Belle Plaine, Richmond, Waukechon, and Wescott. Source: 2000 U.S. Census, 2010 U.S. Census, 2020 U.S. Census, and DOA State Population Projections Vintage 2013.

FIGURE 3-2. POPULATION TRENDS AND PROJECTIONS (2000-2040)



*Towns of Belle Plaine, Richmond, Waukechon, and Wescott. Source: 2000 U.S. Census, 2010 U.S. Census, 2020 U.S. Census, and DOA State Population Projections Vintage 2013.

FIGURE 3-3. MEDIAN AGE TRENDS (2010, 2022)



Source: ACS 2010 5-Year Estimates and ACS 2022 5-Year Estimates.

FACILITIES ASSESSMENT

Outdoor park and recreation facilities provide a safe and inclusive environment where community members can gather, socialize, and engage in physical activity. People use parks for both active and passive forms of recreation, as well as for structured and unstructured activities. To accommodate the diverse needs, interests, and lifestyles of City of Shawano residents, the City should provide a broad array of park and recreation facilities. It is important to periodically assess facility demand as the community continues to evolve. In addition to the facilities listed below, the City provides passive amenities such as benches and shelters.

The 2024 NRPA Agency Performance Review serves as the standard for evaluating the City of Shawano with comparable communities.¹ It offers an extensive collection of data on park and recreation agencies across the United States. Table 3-2 analyzes the prevalence of key park facilities in the City of Shawano compared to communities with a similar population. On average, the City of Shawano provides more facilities per person than other communities in the U.S. However, the need for additional facilities in the City depends largely on local demand. Chapter 4: Community Voice includes detailed survey data on preferred park facilities in Shawano.

TABLE 3-2. CITY OF SHAWANO PARK FACILITIES BY PREVALENCE AND POPULATION PER FACILITY

Facility Type	Total Number of Facilities	Number of Residents per Facility	
		City of Shawano: 9,212 residents (2022)	NRPA Community: Less than 20,000 residents
Basketball Courts	8	1,152	4,366
Diamond Fields	8	1,152	1,833
Disc Golf Courses	1	9,212	10,327
Dog Parks	1	9,212	11,079
Outdoor Fitness Zones/Exercise Stations	-	-	8,233
Pickleball Courts	6	1,535	3,390
Playgrounds or Play Structures	14	658	1,990
Rectangular Fields	7	1,316	2,493
Splash Pads	2	4,606	12,756
Tennis Courts	2	4,606	3,074
Volleyball Courts	1	9,212	9,250

Source: ACS 2022 5-Year Estimates and 2024 NRPA Agency Performance Review.

TABLE 3-3. ESTIMATED CHANGE IN STATEWIDE PARTICIPATION IN NATURE-BASED ACTIVITIES (2020-2040)

It is important to understand statewide recreational trends to effectively plan for recreational facilities at a local scale. Table 3-3 is published in the 2019-2023 Wisconsin Statewide Comprehensive Outdoor Recreation Plan.²

This table shows the estimated change in the number of people that would be participating in the top 25 nature-based recreational activities if the rate of participation in 2020 and 2040 are the same as today.

Ranked by number of additional participants from 2020 to 2040		Ranked by percent change in additional participants from 2020 to 2040	
Activity	# of Additional Participants	Activity	Percent Growth
Birding/wildlife watching at home	242,000	Birding/wildlife watching at home	8.60%
Picnicking/tailgating/cookout	231,000	Birding/wildlife watching away from home	7.70%
Visiting a nature center	209,000	Visiting a nature center	7.30%
Hiking/walking/running on trails	172,000	Nature photography	7.00%
Visiting a beach/beach walking	166,000	Gathering berries, mushrooms, etc.	6.90%
Birding/wildlife watching away from home	152,000	Picnicking/tailgating/cookout	6.30%
Nature photography	127,000	Visiting a beach/beach walking	5.30%
Fishing - any	124,000	Hiking/walking/running on trails	5.30%
Swimming in lakes/rivers/ponds	115,000	Motor boating	5.30%
Motor boating	113,000	Fishing - any	5.20%
Gathering berries, mushrooms, etc.	104,000	Hunting - any	5.20%
Bicycling on roads	92,000	Driving 4-WD vehicles on trails or routes	4.90%
Hunting - any	68,000	Target shooting	4.60%
Target shooting	64,000	Cross-country skiing	4.60%
Walking/running dogs on trails	55,000	Sailing	4.50%
Biking on rail-trails/developed trails	51,000	Swimming in lakes/rivers/ponds	4.50%
Canoeing/kayaking	51,000	Ice skating outdoors	4.20%
Ice fishing	40,000	Bicycling on roads	4.10%
RV camping	38,000	RV camping	3.90%
Waterskiing/tubing/wakeboarding	33,000	Ice fishing	3.70%
Target archery	31,000	Walking/running dogs on trails	3.60%
Tent camping	31,000	Riding ATV/UTVs on trails or routes	3.50%
Cross-country skiing	28,000	Target archery	3.40%
Ice skating outdoors	27,000	Waterskiing/tubing/wakeboarding	3.30%
Riding ATV/UTVs on trails or routes	26,000	Canoeing/kayaking	3.20%

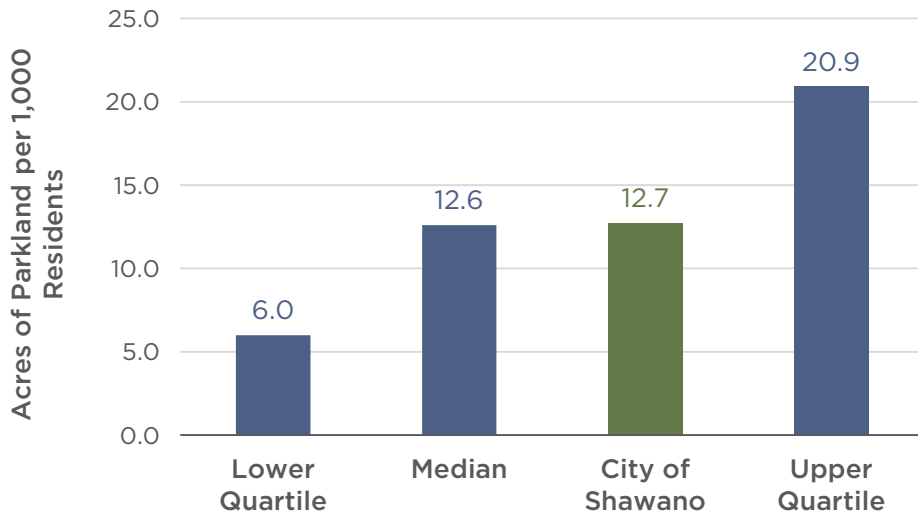
Source: 2019-2023 Wisconsin Statewide Comprehensive Outdoor Recreation Plan (SCORP).

SYSTEMS ASSESSMENT

PARK SERVICE AREAS

The City of Shawano maintains one recreation center, one nature conservancy, and 24 parks and green spaces. Heritage Park and Sunset Island are managed by Shawano County. Excluding the conservancy, fairgrounds, and cemeteries, 26 total parks and green spaces are located in the City. As shown in Map 3-1, the majority of Shawano’s residential neighborhoods to the west are served by a park within walking distance. Unserved areas include the Gannon Court, Timber Trail, Madison Way, and N Airport Drive corridors. The City’s population is projected to grow to the north along N Airport Drive and the south along Engel Drive and CTH B. These areas are partially served by Martzke Park and Eberlein Park, but the roadways largely lack bicycle and pedestrian accommodations. Apart from the Animal Recreation Facility, Engel Drive is unserved by a local park.

FIGURE 3-4. ACRES OF PARKLAND PER 1,000 RESIDENTS (COMMUNITIES <20,000 RESIDENTS)

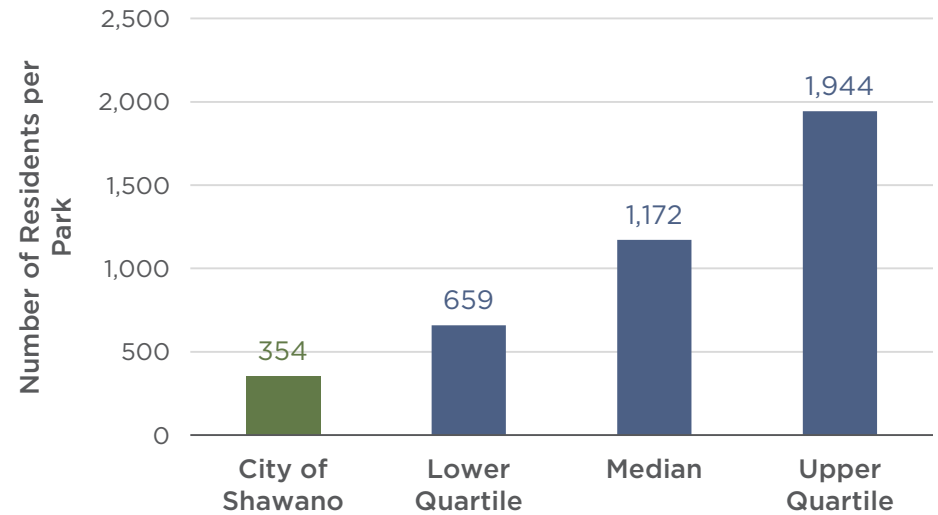


Source: ACS 2022 5-Year Estimates and 2024 NRPA Agency Performance Review.

PARKLAND DEMAND

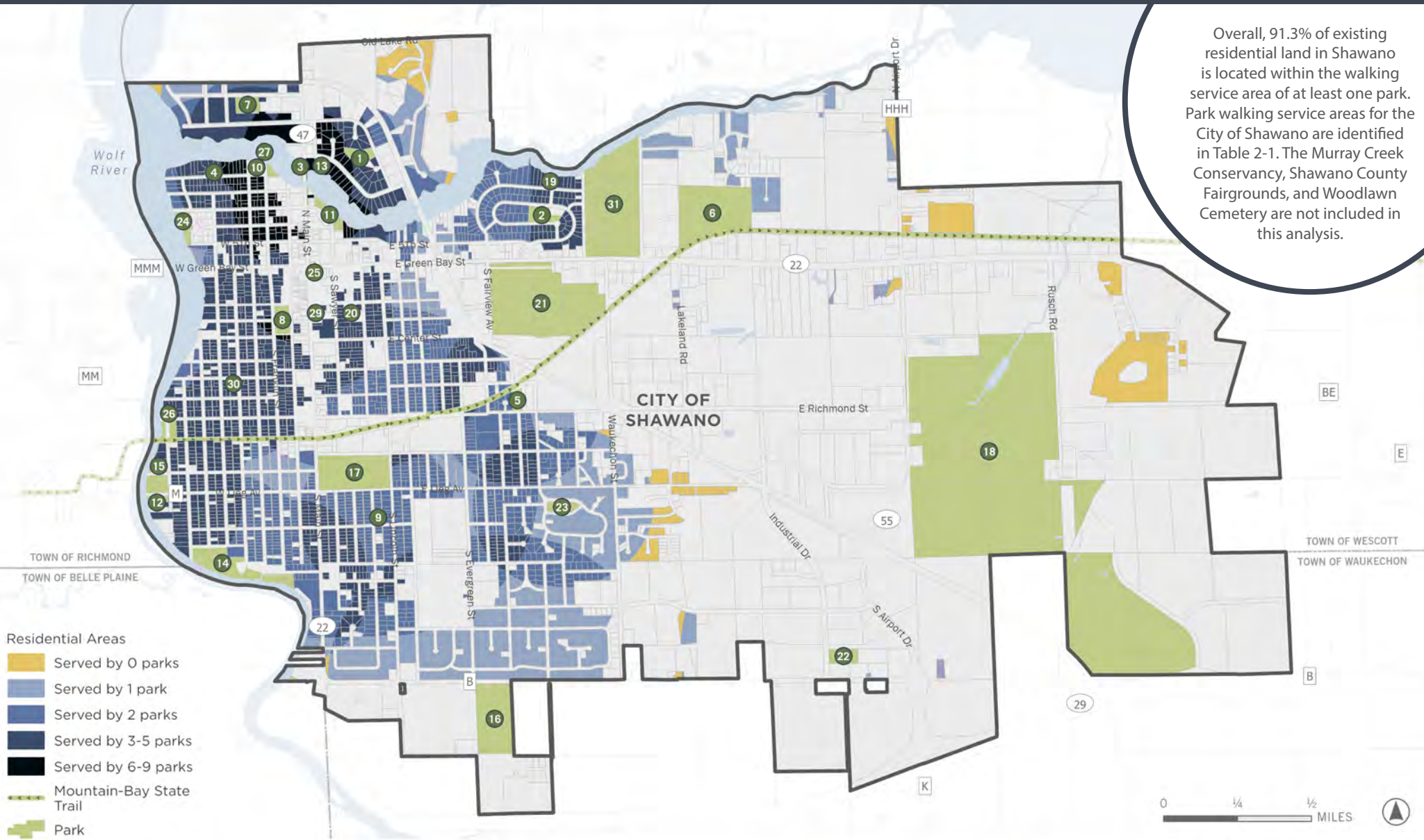
Excluding the conservancy, fairgrounds, and cemeteries, there are 117.2 total acres of parkland and green space in Shawano, equating to 12.7 acres for every thousand residents. According to the 2024 NRPA Agency Performance Review, this number falls just above the median when compared to communities of similar size in the U.S. (Figure 3-4). Additionally, there are 354 residents per park in Shawano. As shown in Figure 3-5, the City offers more parks to its residents than comparable communities. The average area of the 26 parks is modest at 4.5 acres. Building trails at the conservancy could provide the community with a large, forested recreational space. In looking solely at the total acreage and number of parks available in the City, there is minimal need to develop additional parks, except to the south and north where there is future development.

FIGURE 3-5. NUMBER OF RESIDENTS PER PARK (COMMUNITIES <20,000 RESIDENTS)



Source: ACS 2022 5-Year Estimates and 2024 NRPA Agency Performance Review.

MAP 3-1. RESIDENTIAL AREAS SERVED BY A PARK



- | | | | | | | |
|----------------------|------------------|------------------------|------------------------------------|------------------------------|---------------------------|----------------------|
| 1 Alpine Shores Park | 6 Eberlein Park | 11 Huckleberry Harbor | 16 Martzke Park | 20 Recreation Center | 24 Smalley Park | 30 Water Tower Park |
| 2 Arlington Park | 7 Feivor Park | 12 Judd Park | 17 Memorial Athletic Field | 21 Shawano County Fair | 25 Spirit of Shawano Park | 31 Woodlawn Cemetery |
| 3 Channel Park | 8 Franklin Park | 13 Kleeman Family Park | 18 Murray Creek Nature Conservancy | 22 Shawano Dog Park (ARF) | 26 Sturgeon Park | |
| 4 Circle Drive Park | 9 Hartman Park | 14 Kuckuk Park | 19 Pearl Court Park | 23 Shrank's Forest Hill Park | 27 Sunset Island | |
| 5 Co-op Park | 10 Heritage Park | 15 Lieg Park | | | 29 The Naberhood | |

ACCESSIBILITY ASSESSMENT

ADA ACCESSIBILITY

From barrier removal to the development of new facilities, the inclusion of people with disabilities is vital in park and recreation planning. In 2010, the Americans with Disabilities Act (ADA) revised regulations to specifically address areas that affect parks and recreation. Therefore, the concept of renovating parks to make them more accessible and inclusive has grown increasingly popular. The City of Shawano recently rebuilt the Memorial Park and Kuckuk Park playgrounds with ADA accessible features.

SAFE ROUTES TO PARKS

Creating safe walking and biking connections to parks is crucial for ensuring universal access to park facilities. The Mountain-Bay State Trail and the City's network of sidewalks help form safe routes to parks in the City of Shawano. Linking parks to the Mountain-Bay State Trail via bicycle facilities such as trails or bike lanes should be prioritized. Major barriers to walking or biking include Green Bay Street, Main Street, the railroad, and CTH B.

INCLUSIVE PLAYGROUNDS

Inclusive playgrounds are accessible to children and caregivers of all abilities, allow all children to learn through play and better social-emotional skills, and boost children's confidence by allowing them to try new things and build new skill sets.³ Listed below are common inclusive features found on playgrounds.

- ▶ Communication boards
- ▶ Accessible surfacing
- ▶ Ramps
- ▶ Accessible paths to, and around, the playground
- ▶ Ample shade and seating
- ▶ Fences or natural barriers
- ▶ Imaginative play opportunities and themes
- ▶ Wheelchair accessible swings; Saucer swings; "Adaptive" or "inclusive" swings
- ▶ "Quiet" or "calm down" spaces
- ▶ Spinny egg-shaped chairs
- ▶ Accessible merry-go-rounds/"spinners"
- ▶ Tactile/musical elements
- ▶ Inclusive gliders/rockers
- ▶ Slides with easy transfer mechanisms

HEALTH ASSESSMENT

PARKS AND HEALTH

People’s health is often related to and influenced by their participation in outdoor recreation. According to the Trust for Public Land, there are eight ways parks can improve overall health.⁴

1. Parks increase exercise. People who live near and regularly use parks are shown to exercise more than people who don’t.
2. Most moderate exercise takes place in parks, about 12%. Parks are where people get the type of exercise their bodies need most.
3. Parks reduce stress and clear the mind. Outdoor areas boost focus and promote relaxation.
4. A park makeover with aesthetically pleasing spaces encourages use and promotes public health habits.
5. A variety of amenities can attract different users (i.e. skateparks, baseball diamonds, or trails) and encourage fun, physical activities.
6. Dedicated fitness zone areas encourage exercise and increase park use. Body fitness stations encourage adults to workout.
7. Supervised activities and programming maximize a park’s public health benefit.
8. Exercise is one of the cheapest ways to stay healthy. By promoting healthy habits, parks can help reduce health care costs.

COUNTY HEALTH RANKINGS

Table 3-4 highlights key metrics from the 2024 Shawano County Health Rankings and Roadmaps. The measures in the County Health Rankings and Roadmaps are based on a model of population health that emphasizes social, economic, physical, and clinical factors.

TABLE 3-4. SHAWANO COUNTY KEY HEALTH METRICS (2024)

Health Metric	Poor or Fair Health	Percentage of adults reporting fair or poor health (age-adjusted)	Shawano Co.	15%
			Wisconsin	13%
	Poor Physical Health Days in Past 30 Days	Average number of physically unhealthy days reported in past 30 days (age-adjusted)	Shawano Co.	3.6
			Wisconsin	3.3
	Poor Mental Health Days in Past 30 Days	Average number of mentally unhealthy days reported in past 30 days (age-adjusted)	Shawano Co.	5.1
			Wisconsin	4.8
	Adult Obesity	Percentage of adults that report a BMI of 30 or more	Shawano Co.	36%
			Wisconsin	34%
	Physical Inactivity	Percentage of adults age 20 and over reporting no leisure-time physical activity	Shawano Co.	23%
			Wisconsin	19%
	Access to Exercise Opportunities	Percentage of population with adequate access to locations for physical activity	Shawano Co.	48%
			Wisconsin	84%

Source: 2024 County Health Rankings and Roadmaps.

CHAPTER THREE ENDNOTES

¹ 2024 NRPA Agency Performance Review. National Recreation and Park Association. 2024. <https://www.nrpa.org/siteassets/research/2024-agency-performance-review.pdf>

² Wisconsin Statewide Comprehensive Outdoor Recreation Plan 2019-2023. Wisconsin Department of Natural Resources. 2019. <https://dnr.wisconsin.gov/topic/fl/PropertyPlanning/Scorp>

³ Lammert, Madison. *Inclusive playgrounds provide a safe place for children of all abilities. Here's why that's important.* Appleton Post Crescent. 2024. <https://www.postcrescent.com/story/life/family/2024/04/23/inclusive-playgrounds-are-cropping-up-what-are-they/73245636007/>

⁴ 8 Ways that Parks Improve your Health. The Trust for Public Land. 2013. <https://e7jecw7o93n.exactdn.com/wp-content/uploads/2022/10/Parks-Health-Brochure.pdf>



4

COMMUNITY VOICE

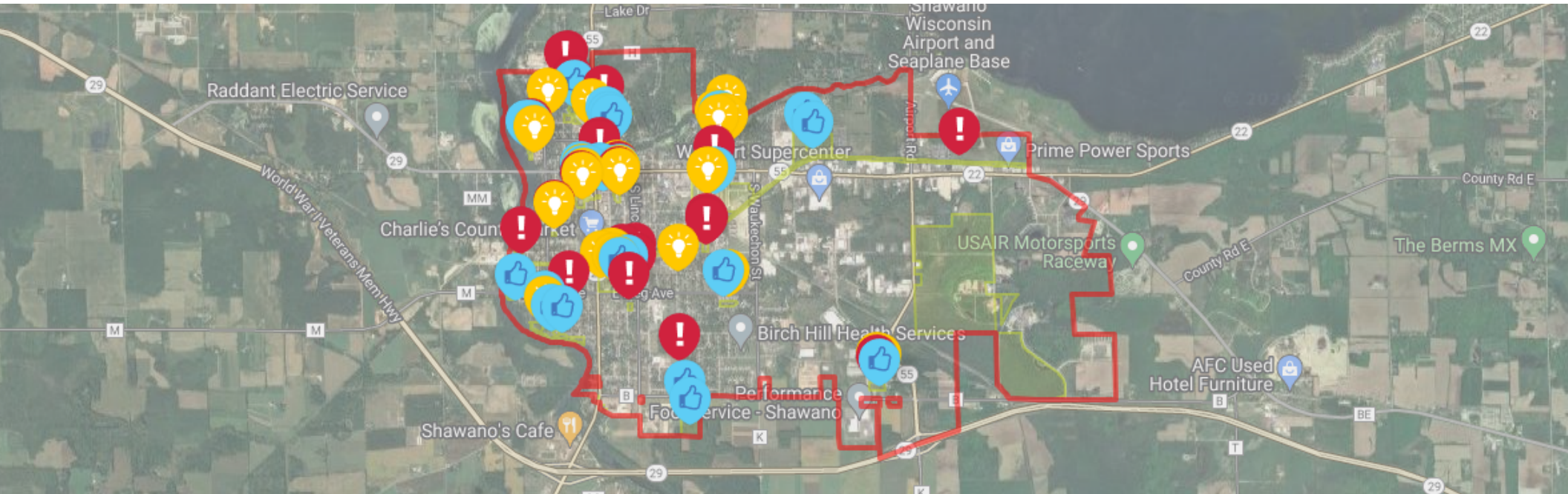


COMMUNITY VOICE

COMMUNITY ENGAGEMENT OVERVIEW

Creating a successful Comprehensive Outdoor Recreation Plan relies heavily on engaging the community. This chapter highlights feedback from residents and stakeholders about Shawano's parks and recreation programs. Key engagement efforts included a visioning session, pop-up event, and community survey. Ultimately, community feedback informs the final recommendations for the plan.

By engaging a diverse cross-section of the population, including youth, seniors, families, and local organizations, this chapter underscores the commitment to creating parks that truly reflect the vision of the Shawano community. This inclusive approach not only fosters transparency but also builds a sense of ownership among residents, ensuring that the final plan reflects their priorities.



COMMUNITY ENGAGEMENT EFFORTS

WEBSITE, SURVEY, AND INTERACTIVE MAP

A project website for the CORP update was active from April 16th, 2024 to June 23rd, 2024. The project website was advertised on the City of Shawano website and social media, in a printed newsletter, and at pop-up events. The website included a link to a survey with 15 questions, exploring topics such as park facility needs, bicycle and pedestrian access, priority investments, and demographics. The project website also included an interactive map for users to share ideas and suggestions, areas of improvement, and things they like about the parks. The survey generated 488 responses, and the interactive map generated 88 responses.

IN-PERSON ENGAGEMENT

ECWRPC staff and City of Shawano staff attended several in-person events to promote the CORP update and gather feedback from the community. On May 7th, 2024, ECWRPC staff engaged with two groups of 30 high school students at Shawano High School. Students participated in a short survey and used stickers and post-its to interact with posters. On May 20th, 2024, City of Shawano staff engaged with third grade students at City Hall. The students were asked to vote for their favorite park and “one thing you wish we had in our parks” as part of Student Government Day. 154 students participated in this effort.

An open house style community visioning session took place on May 28th, 2024 at the Shawano City Hall. During this event, key stakeholders representing interests such as Shawano Pathways, Shawano Business Improvement District, and the Shawano Park and Recreation Commission discussed park investments and improvements.

ECWRPC staff and City of Shawano staff attended a concert at Franklin Park to promote the CORP update. This event took place on June 20th, 2024. Staff printed posters for people to engage with, and tablets were provided to complete the online survey.



THIRD GRADER ENGAGEMENT RESULTS

Student Government Day Tally Sheet

Question:

Answers:	5	10	15	20	25	30	35	Total
Trampoline(s)								29
Rock Climbing Wall								15
Zipline(s)								16
Farmers Markets								1
Lazer Tag								1
Food								2
Pool								32
More Splash Pads								1
Bouncy Balls								1
Food and Drink Bar								1
Roller Coster								5
Gymnastic bars								1
Dino Swings								1
Bungey Jump								1
Water Park								1
Area for Dog Park								1
Slip & Slide								2
Water Slides								16
Speakers to listen to music								3
Slides								2
Mini Golf								1
Hot Tub								1
A Bubbler								1
Spider Web								2
More Pickleball Courts								1
Mini Basket Ball Hoop								1
Dancing Stuff								1
Monkey Bars								5
Parent Seating & Toddler Areas								1
Little Toy Car								1
Two Person Swing								1
Kickball								1
Big Sled								1
Tables with shade outside of the Shelters								1
More Swings								1
Gates to fence in for runners								1
Nerf Guns								1

What is one thing you wish we had in our parks?

Favorite park? (1)	:	59
Kuckuk Park	:	68
Memorial Park	:	1
Smalley Park	:	14
Franklin Park	:	142
Total Votes	:	1
Number of Overvotes	:	0
Number of Undervotes	:	0

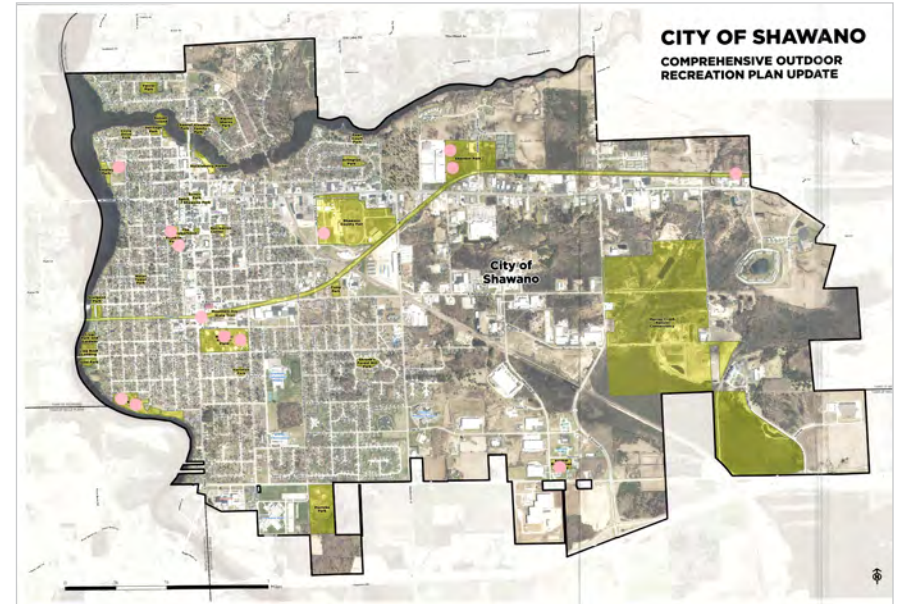
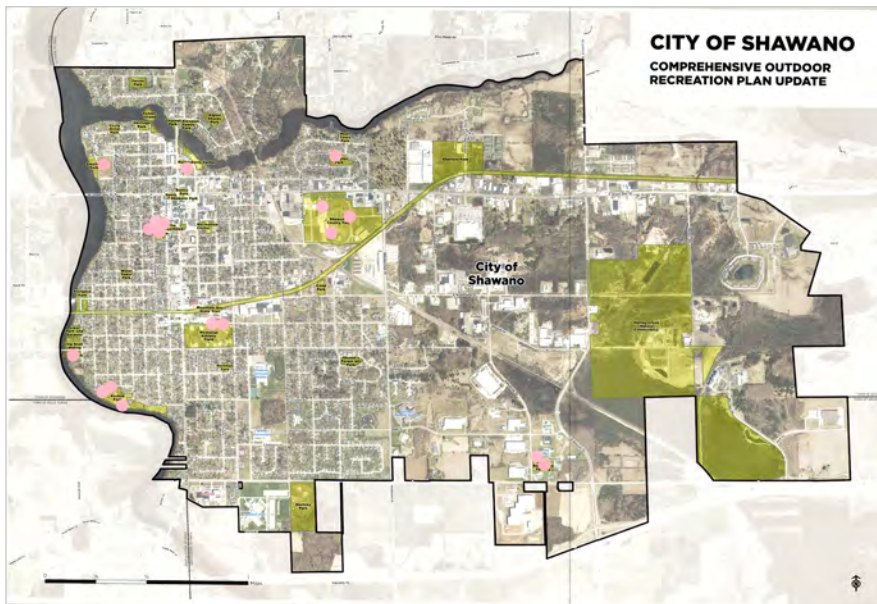
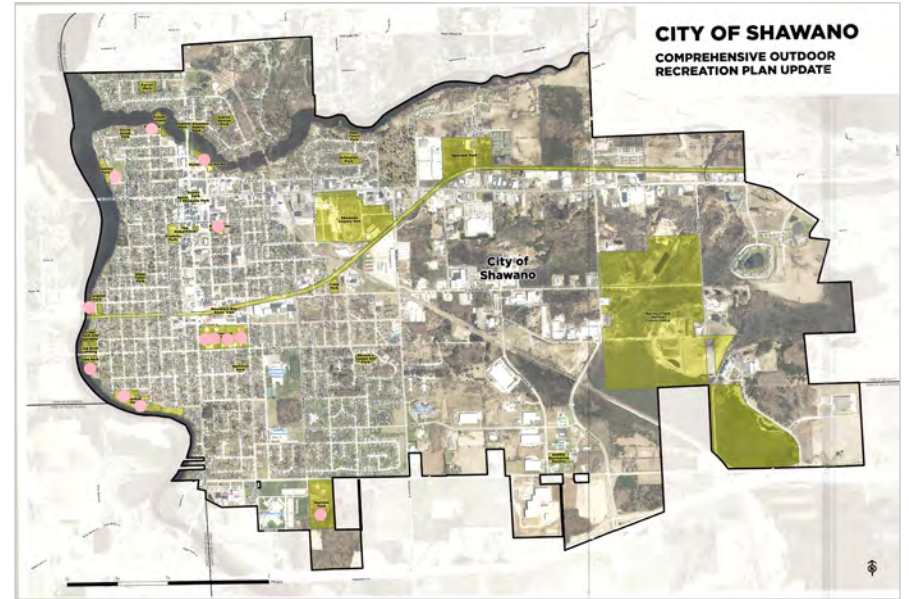
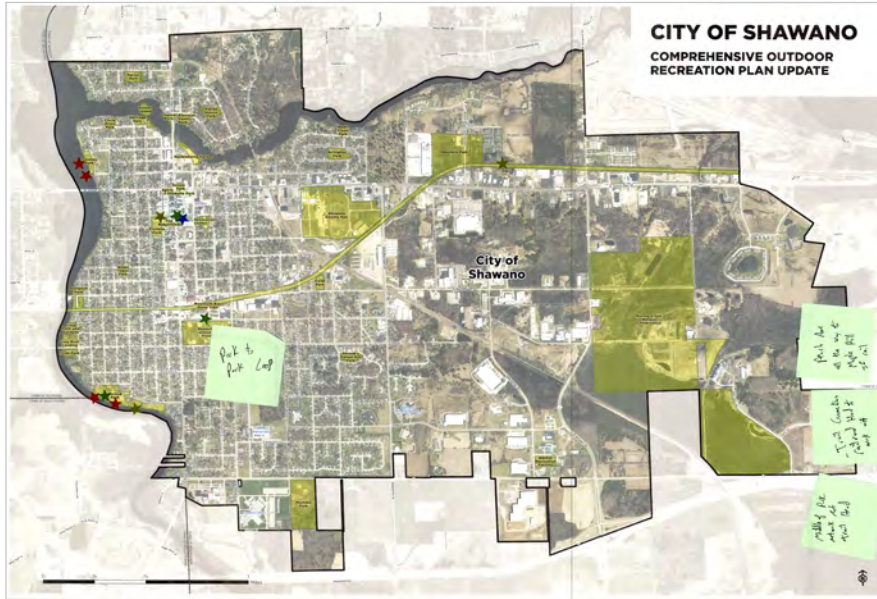
Favorite thing to do? (1)	:	49
Swings	:	26
Slides	:	31
Run	:	36
Listen to Music	:	142
Total Votes	:	0
Number of Overvotes	:	1
Number of Undervotes	:	1

One thing you wish we had? (1)	:	58
Write In:	:	58
Total Votes	:	0
Number of Overvotes	:	85
Number of Undervotes	:	85

154 Total Votes

* some students voted for more than one thing they wished our parks had.

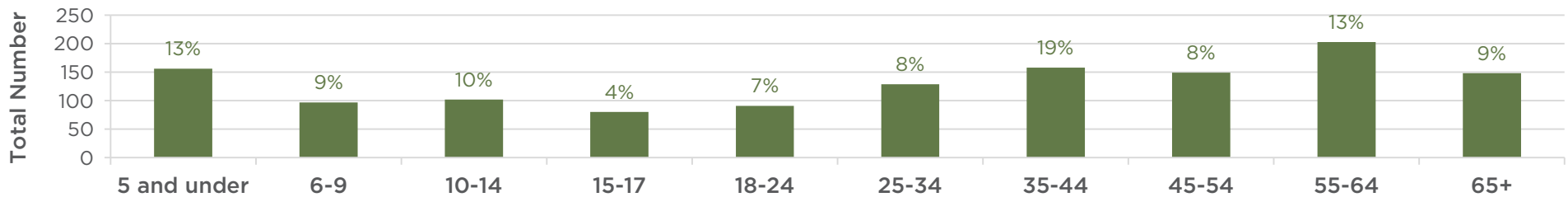
IN-PERSON ENGAGEMENT RESULTS: "WHAT IS YOUR FAVORITE PARK?"



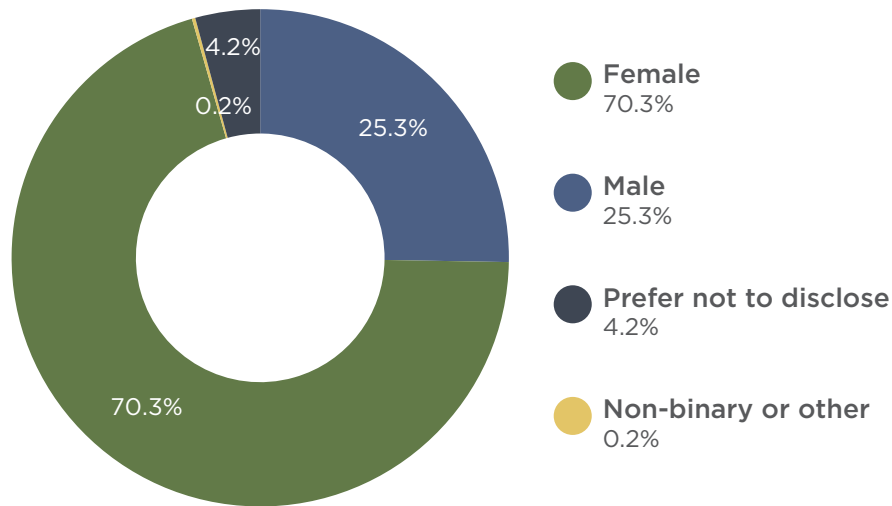
DEMOGRAPHICS

FIGURE 4-1. DEMOGRAPHICS OF SURVEY RESPONDENTS

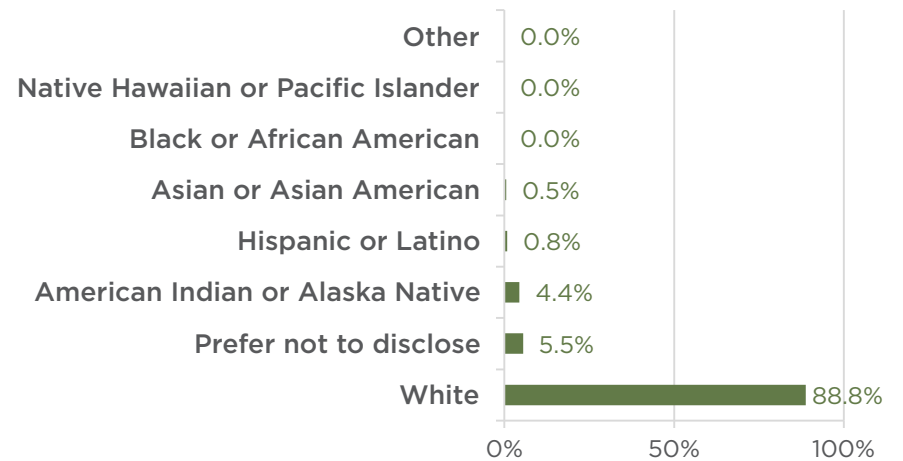
PLEASE IDENTIFY THE NUMBER OF PEOPLE IN EACH AGE GROUP LIVING IN YOUR HOUSEHOLD.



WHAT IS YOUR GENDER?

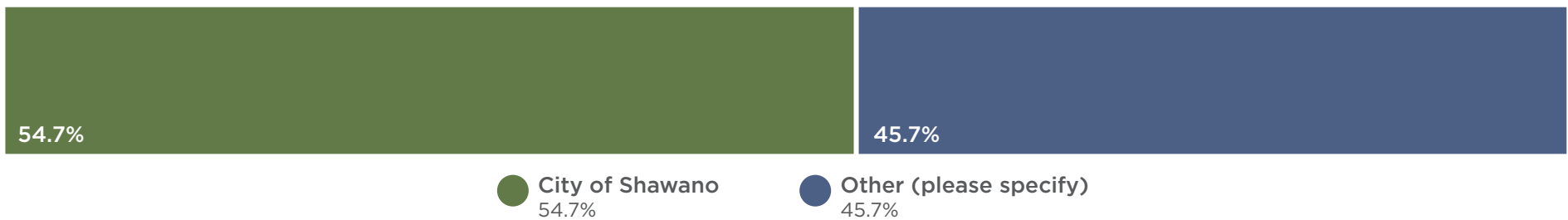


WHAT IS YOUR RACE OR ETHNIC GROUP?



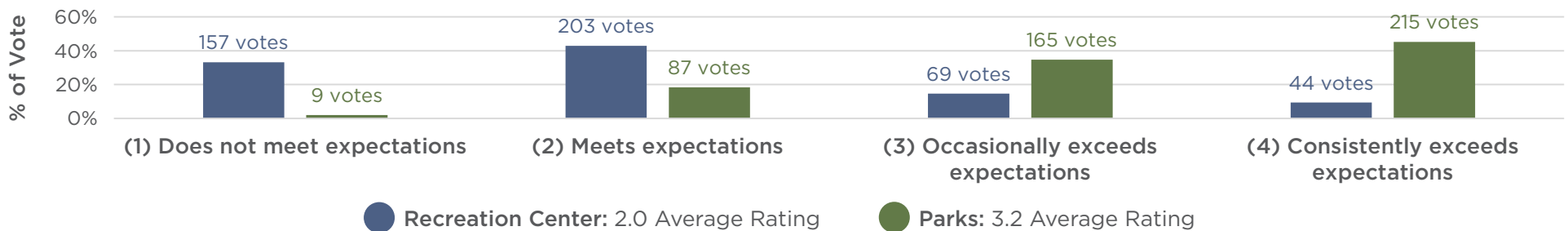
Q1: WHAT MUNICIPALITY DO YOU RESIDE IN?

FIGURE 4-2. Q1 RESULTS



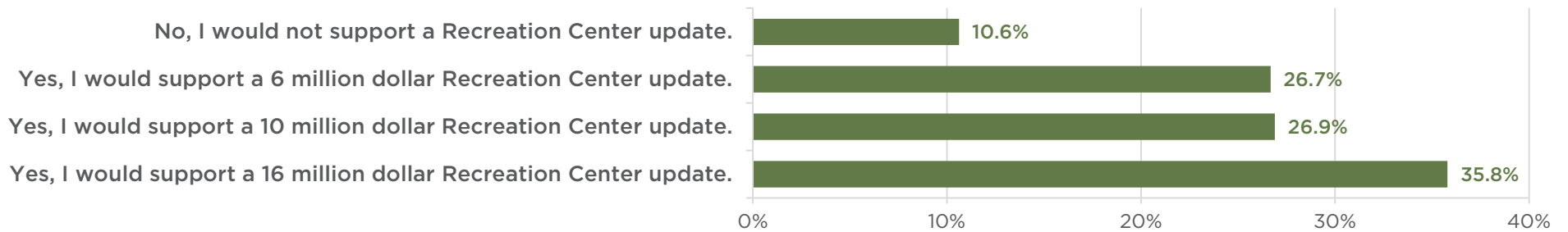
Q2 AND Q3: OVERALL, HOW SATISFIED ARE YOU WITH THE QUALITY AND CONDITION OF THE RECREATION CENTER AND PARKS IN THE CITY OF SHAWANO? (SCALE OF 1-4)

FIGURE 4-3. Q2 AND Q3 RESULTS



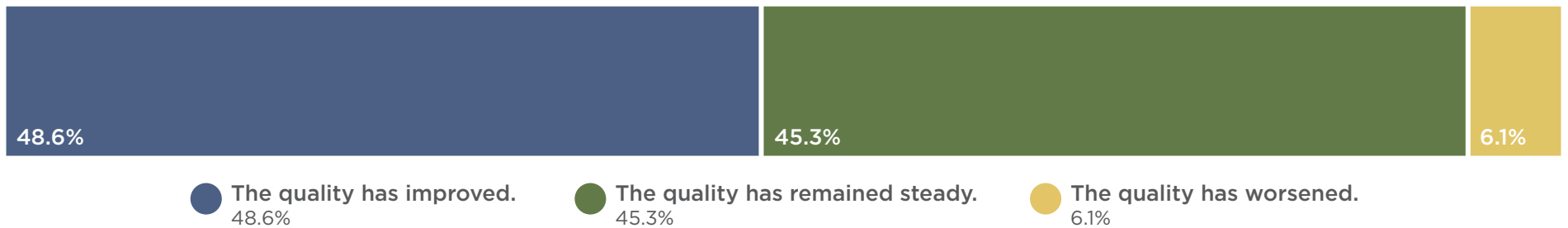
Q4: WOULD YOU SUPPORT SIGNIFICANT IMPROVEMENTS TO THE SHAWANO RECREATION CENTER? IF SO, HOW MUCH SHOULD THE CITY SPEND ON AN UPDATE PROJECT?

FIGURE 4-4. Q4 RESULTS



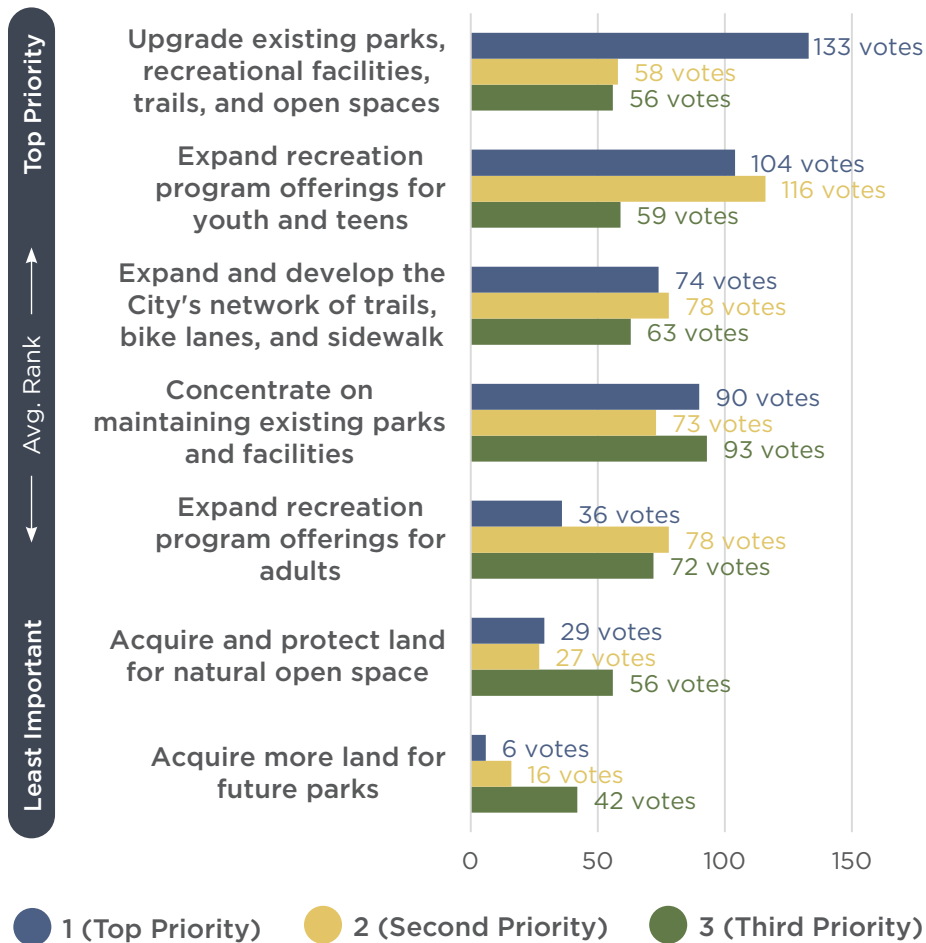
Q5: OVERALL, HOW HAS THE QUALITY OF CITY RECREATION PROGRAMS AND STAFF CHANGED IN RECENT YEARS?

FIGURE 4-5. Q5 RESULTS




Q6: HOW CAN THE CITY OF SHAWANO BEST IMPROVE THE LOCAL PARK SYSTEM? RANK UP TO THREE OPTIONS (1-3) WHERE 1 IS THE TOP PRIORITY TO YOU.

FIGURE 4-6. Q6 RESULTS




BICYCLE AND PEDESTRIAN ENHANCEMENTS

 "I believe having sidewalks everywhere in town for accessibility for all is a priority. We also need an increase in trails especially by water and to improve on the maintenance of the Mountain Bay Trail."


"Shawano really hurts in walkability. It's tough to get around town without driving..."

ACCESS TO WATER AND WOODLANDS

 "Having park areas that are wooded/forest/and natural is something we are lacking in our parks and town."

"Olga [Brener] woods needs to become a park and protected for our youth..."

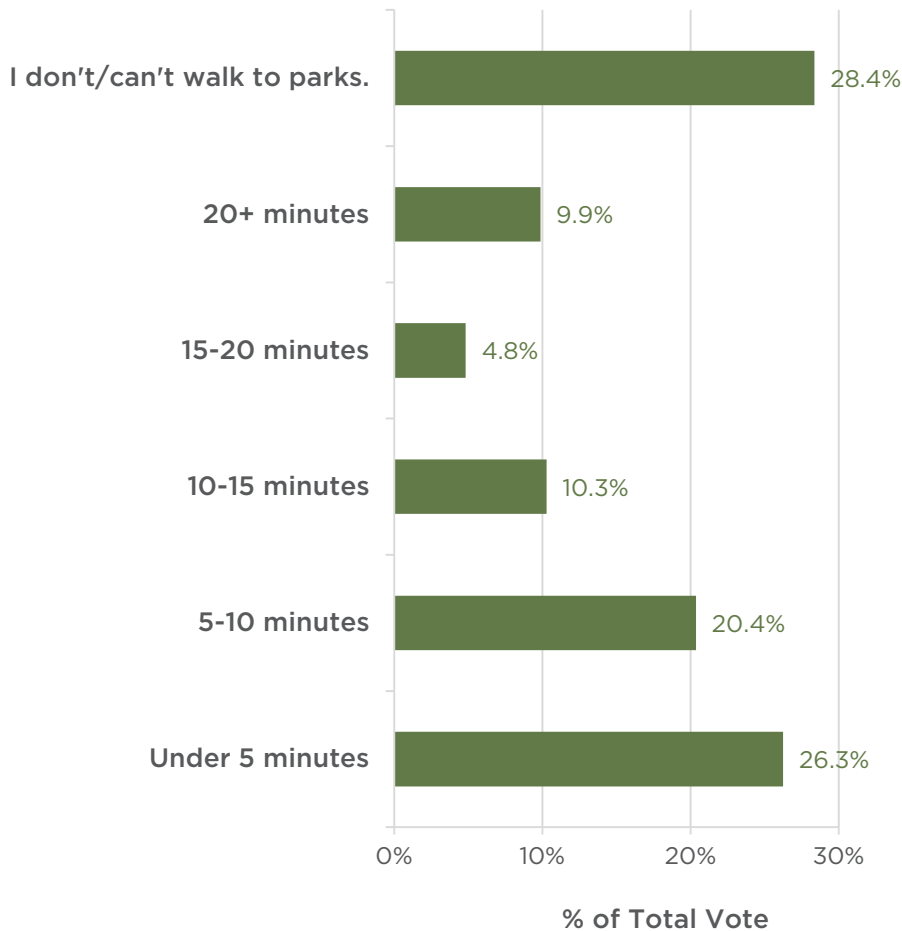
RECREATION IN ALL SEASONS FOR ALL AGES

 "There are no programs for teens...The swimming lessons only go to a low level and no higher level or adult stroke improvement courses are offered. Please offer programs for teens, like "night out" or similar where they can learn sports/outdoor skills/hike/hunt/etc."

"More items for the youth and people with disabilities."

Q7: ON AVERAGE, HOW LONG DOES IT TAKE YOU TO REACH YOUR NEIGHBORHOOD PARK VIA WALKING?

FIGURE 4-7. Q7 RESULTS



PARK AND FACILITY UPGRADES



"Great job on the projects and beautification that's been done. Please pave areas around the diamonds for walkers and wheelchairs. Make it easier getting to watch multiple games. More benches around diamonds bleacher seating isn't for everyone. Have all concession stands open and more restrooms by B diamond not [porta] potty. Thank you."

"I live right by Franklin Park, but usually venture to another park that has play equipment for my young kids."

BICYCLE AND PEDESTRIAN ENHANCEMENTS



"I appreciate all of the options my family has for parks around us. Making sure there are safe facilities to get to these parks is something I feel could be improved (sidewalk/trail networks, etc.)"

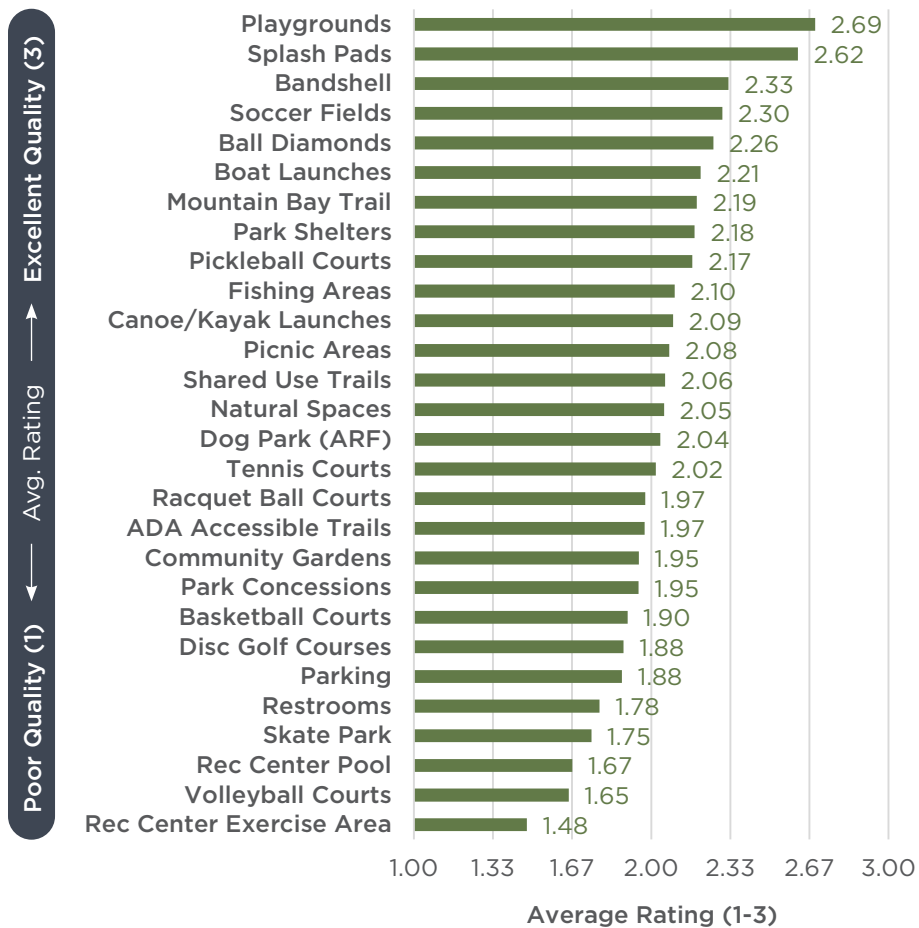
"Too far from home, but can walk to a few parks within 5-10 min from work"

"I would love to use the mountain bay trail much more, but just feel it has been seriously neglected"

"I live outside City Limits, but would love to see more paved bike trails to make it possible to get to the City by bike/walking."

Q8 PART 1: IN YOUR OPINION, WHICH PARK FACILITIES NEED IMPROVEMENT IN THE CITY OF SHAWANO? PLEASE RATE THE QUALITY OF EACH FACILITY.

FIGURE 4-8. Q8 PART 1 RESULTS



RECREATION IN ALL SEASONS FOR ALL AGES



"The Rec Center should be the next area to be enlarged, modernized and improved. With programs for adults and teens. It isn't just kids who want and need activities! Adults need swimming lessons, tennis lessons, etc."

"Need more indoor basketball space..."

PARK AND FACILITY UPGRADES



"Eberlien park needs improvements."

"Feivor park needs an upgrade. All parks with wood chips are covered in thistles and I'm worried my kids will step on them."

"Some parks could use more picnic tables."

BICYCLE AND PEDESTRIAN ENHANCEMENTS

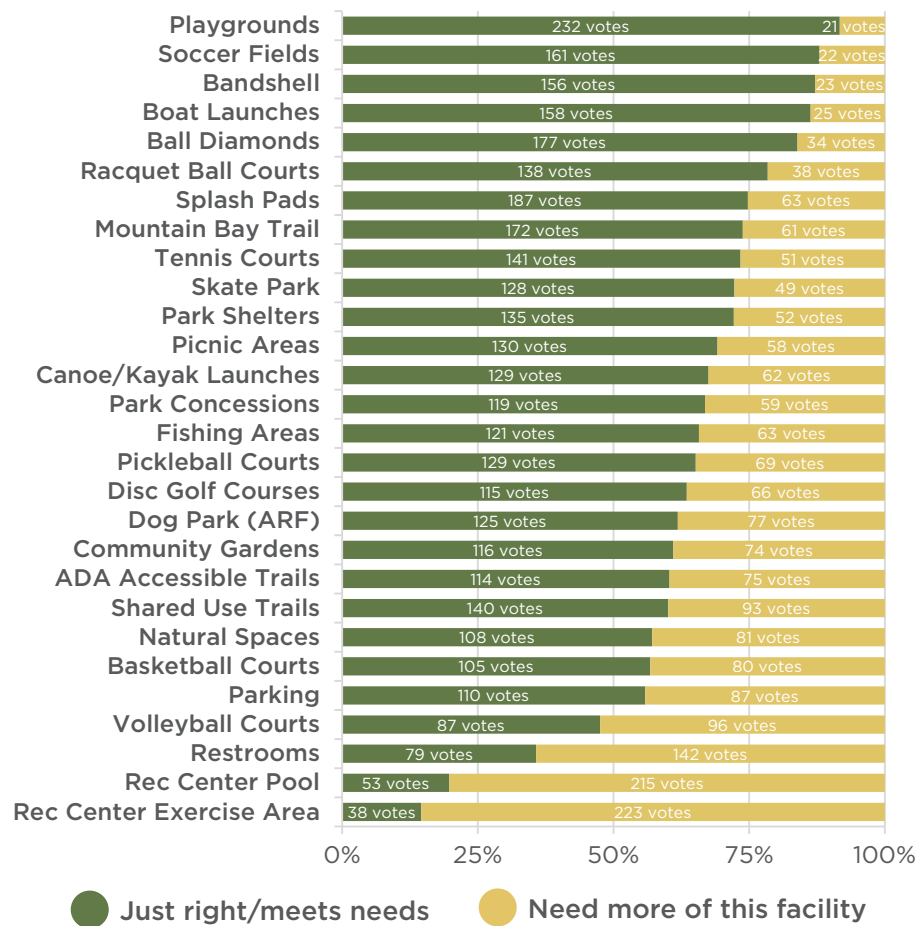


"Quality of trails often poor, need gravel re supplied more often; better would be to pave more trail, esp for ADA access."

"Kukuck park needs new restroom facilities and lights along riverway for evenings when sun goes down."

Q8 PART 2: IN YOUR OPINION, WHICH PARK FACILITIES NEED IMPROVEMENT IN THE CITY OF SHAWANO? PLEASE RATE THE SUPPLY OF EACH FACILITY.

FIGURE 4-9. Q8 PART 2 RESULTS



RECREATION IN ALL SEASONS FOR ALL AGES



"An indoor dedicated pickleball facility with 2-4 courts would be a great asset in the fall and winter months to be able to get out and exercise."

"We need an outdoor skating rink - not enough ice time at the Crawford Center"

ACCESS TO WATER AND WOODLANDS



"A boat cleaning/ invasive species clean off area at Huckleberry Harbor would be nice..."

"... Public pier fishing is too limited. Shawano needs to acquire more land to protect as natural spaces before it is developed and lost."

BICYCLE AND PEDESTRIAN ENHANCEMENTS



"It would be beneficial to have more drinking water/fountains/ bubblers available along trails (for humans and dogs. And more trash receptacles, especially for dog walkers to dispose properly of poop bags."

"Pump track and mountain biking area"

Q9: BASED ON YOUR HOUSEHOLD, WHAT ARE THE MOST POPULAR PARK AMENITIES THAT THE CITY OF SHAWANO CURRENTLY OFFERS? PLEASE CHOOSE UP TO TWO (2) AMENITIES FOR EACH AGE GROUP IN YOUR HOUSEHOLD.

FIGURE 4-10. Q9 RESULTS

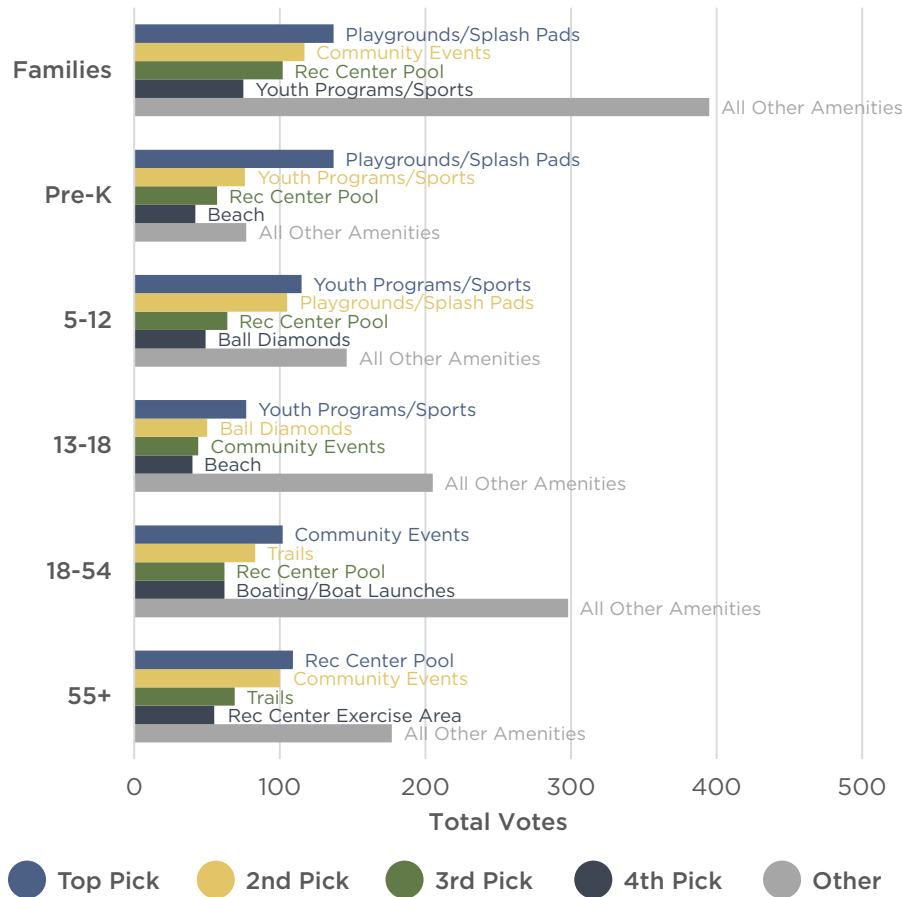
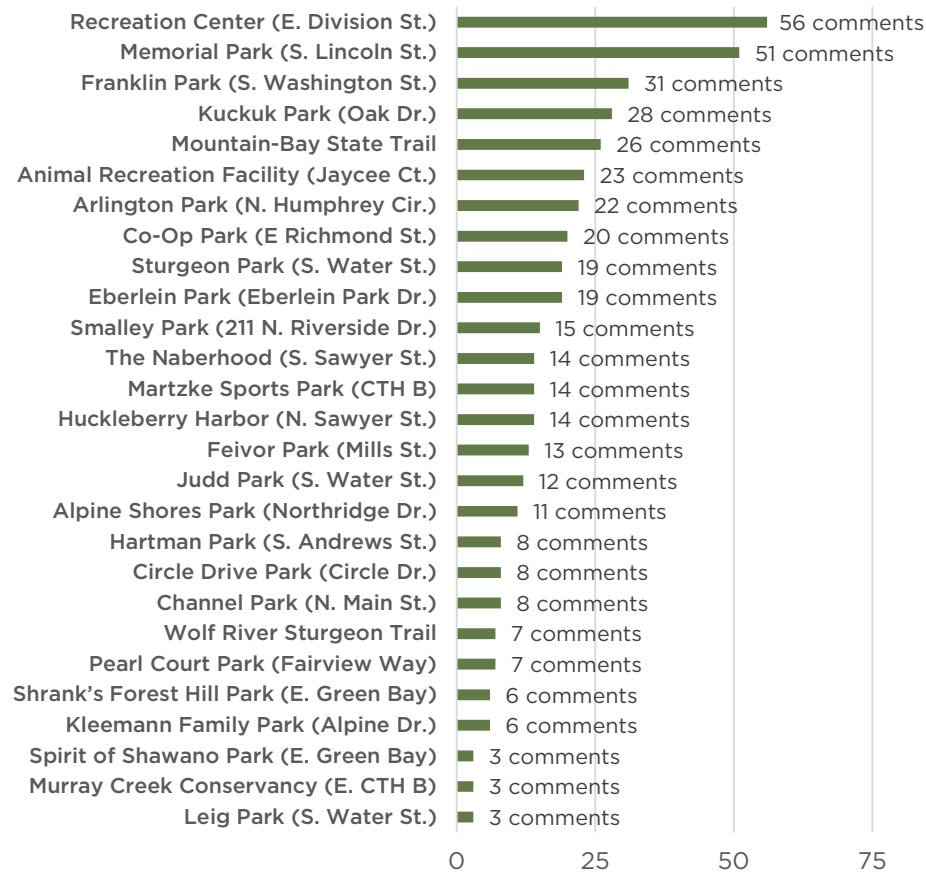


TABLE 4-1. Q9 RESULTS: 2024 VS 2020

Age Group	2024 Survey Results		2020 Survey Results	
	Top Pick Amenity	Second Pick Amenity	Top Pick Amenity	Second Pick Amenity
Families	Playgrounds/Splash Pads (42%)	Community Events (36%)	Playgrounds (75%)	Beach (30%)
Pre-K	Playgrounds/Splash Pads (72%)	Youth Programs/Sports (40%)	Splash Pad (79%)	Playgrounds (72%)
5-12	Youth Programs/Sports (55%)	Playgrounds/Splash Pads (50%)	Youth Sports (72%)	Splash Pad (39%)
13-18	Youth Programs/Sports (44%)	Ball Diamonds (28%)	Basketball (54%)	Beach/Skate/BMX (38%)
18-54	Community Events (39%)	Trails (32%)	Events (43%)	Water Sports/Motorized (23%)
55+	Recreation Center Pool (50%)	Community Events (46%)	Civic Center/Events (45%)	Indoor Pool (39%)

Q10: ARE THERE ANY ADDITIONAL RECREATIONAL AMENITIES, FACILITY IMPROVEMENTS, OR MAINTENANCE NEEDS THAT YOU FEEL ARE STRONGLY NEEDED AT A PARTICULAR PARK IN THE CITY?

FIGURE 4-11. Q10 RESULTS



PARK AND FACILITY UPGRADES



Eberlein Park: "I would love to see this park improved or updated. So many children use this park from the apartments, childcare center, and sporting events (like soccer) and doesn't seem to be enough equipment for all to use..."

Arlington Park: "New courts. Separate basketball from the tennis courts."

Recreation Center: "More space to hang out while your kids are swimming. A place to sit and catch up on work would be nice."

Kuckuk Park: "Kayak launch"

BICYCLE AND PEDESTRIAN ENHANCEMENTS



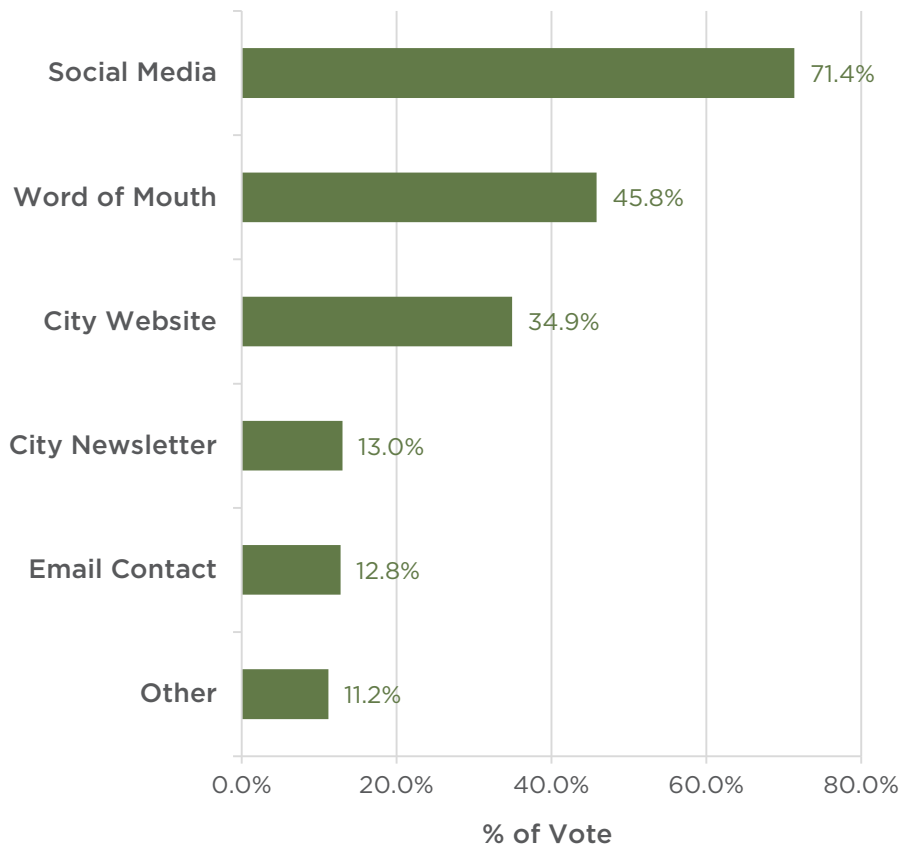
Memorial Park: "a clear trail through the park to connect the Blue Park-to-Park loop (coming from Elizabeth St. going to Leig St.)"

Murray Creek Conservancy: "Create hiking trails, trailhead facility with restrooms, picnic area"

Mountain-Bay State Trail: "Wouldn't mind the portion from main to sturgeon park paved."

Q11: HOW DO YOU GET INFORMATION ABOUT CITY PARKS AND RECREATION PROGRAMS OR ACTIVITIES? PLEASE CHECK ALL THAT APPLY.

FIGURE 4-12. Q11 RESULTS



Q15: PLEASE PROVIDE ANY OTHER COMMENTS TO HELP US IMPROVE THE PARKS AND RECREATIONAL SERVICES FOR THE CITY OF SHAWANO.

PARK AND FACILITY UPGRADES



"I would like to see some larger parks, parks that have bike trails, hiking trails, playgrounds, and nature centers..."

"Please get more playground equipment for children with special needs. Barely go to parks because my child has nothing to do."

MARKETING AND TOURISM



"We are regular users of the Mountain Bay trail. We feel that Shawano does not take advantage of the recreation opportunities that could be advertised statewide."

"...Please consider developing a "park of the week"..."

RECREATION IN ALL SEASONS FOR ALL AGES

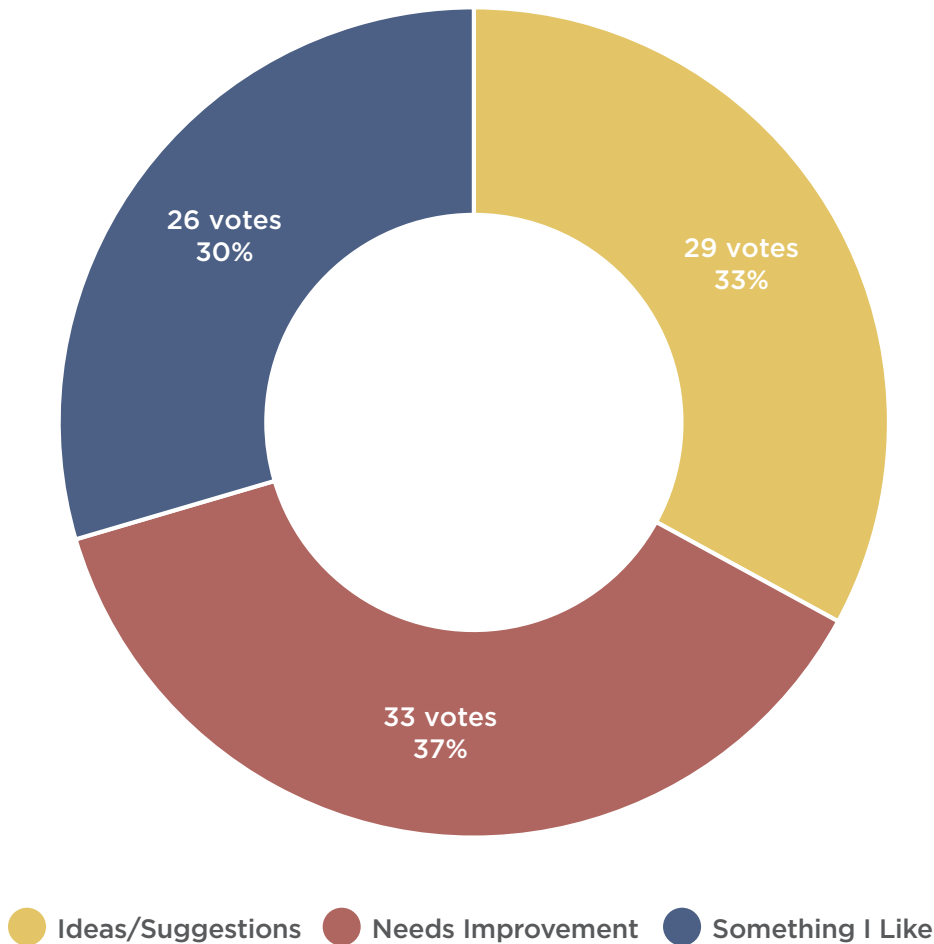


"Love all the programs offered during the summer. Could this possibly extend to some winter programs for the youth?"

"A zero entry pool would be a great addition to our rec center along with more hours for the community to freely use it!"

"PLEASE SHARE YOUR IDEAS TO HELP SHAPE THE FUTURE OF SHAWANO PUBLIC PARKS AND RECREATION SPACES!"

FIGURE 4-13. MAP COMMENT TYPES



IDEAS/SUGGESTIONS



Franklin Park: "A skating rink could be installed here."

Kuckuk Park: "Consider adding art and culture element to this park along the river. a good example is the Bozeman Sculpture Park in Montana."

NEEDS IMPROVEMENT



Recreation Center: "Expanded weightlifting area and updated equipment is needed."

Mountain-Bay State Trail: "This part of the trail needs lighting or areas that could help secure protection. Walking this part of the trail is scary for me as a female with my 5 year old."

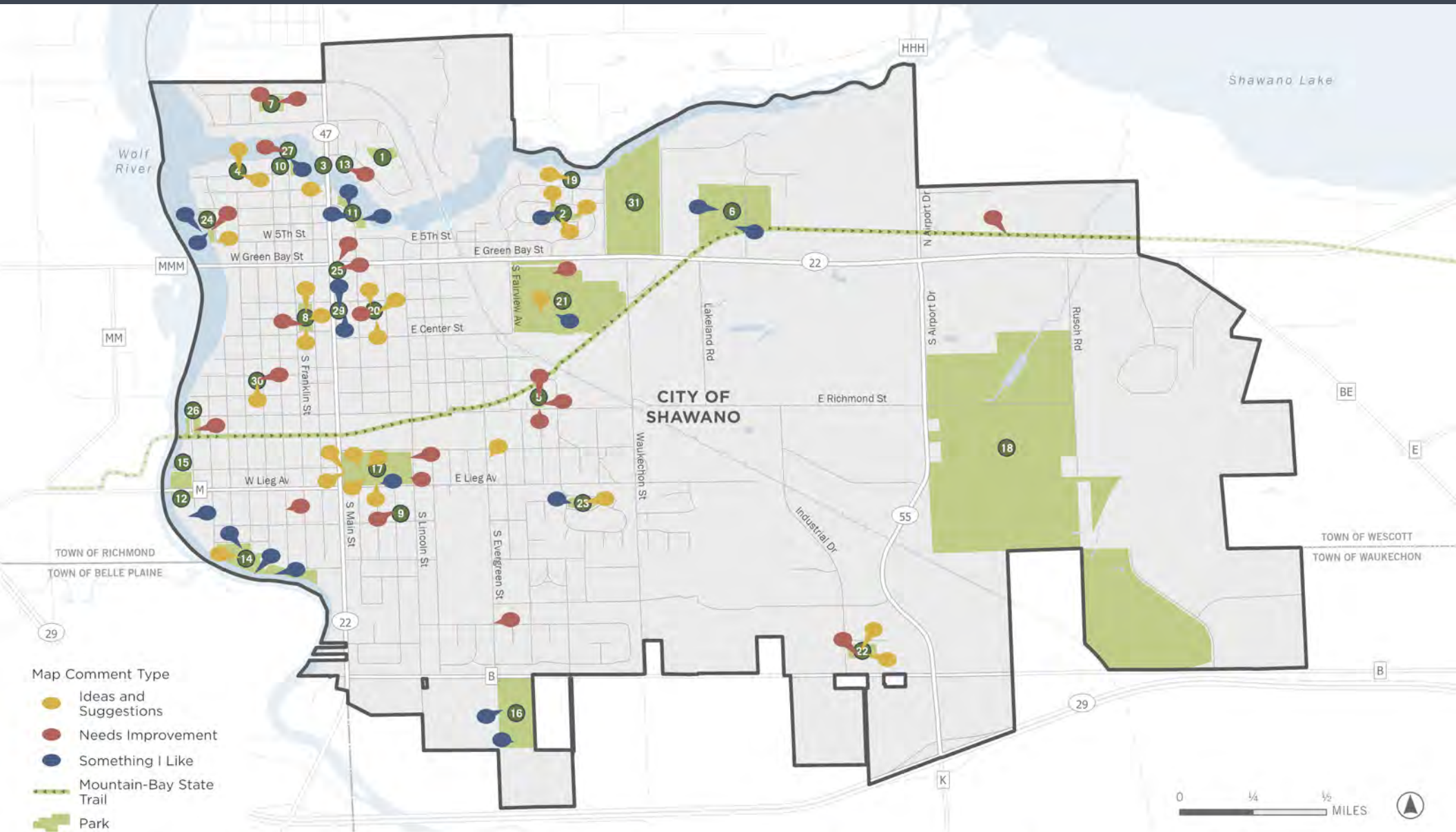
SOMETHING I LIKE



Franklin Park: "Thursdayz @ Franklin is the highlight of my summer!"

The Naberhood: "Love that you created a connection to the Naberhood/downtown - more connectivity across the City, please!"

MAP 4-1. INTERACTIVE MAP RESULTS



- | | | | | | | |
|----------------------|------------------|------------------------|------------------------------------|------------------------------|---------------------------|----------------------|
| 1 Alpine Shores Park | 6 Eberlein Park | 11 Huckleberry Harbor | 16 Martzke Park | 20 Recreation Center | 24 Smalley Park | 30 Water Tower Park |
| 2 Arlington Park | 7 Feivor Park | 12 Judd Park | 17 Memorial Athletic Field | 21 Shawano County Fair | 25 Spirit of Shawano Park | 31 Woodlawn Cemetery |
| 3 Channel Park | 8 Franklin Park | 13 Kleeman Family Park | 18 Murray Creek Nature Conservancy | 22 Shawano Dog Park (ARF) | 26 Sturgeon Park | |
| 4 Circle Drive Park | 9 Hartman Park | 14 Kuckuk Park | 19 Pearl Court Park | 23 Shrank's Forest Hill Park | 27 Sunset Island | |
| 5 Co-op Park | 10 Heritage Park | 15 Lieg Park | | | 29 The Naberhood | |

5

GOALS AND RECOMMENDATIONS

GOALS AND RECOMMENDATIONS

PLAN GOALS

The following goals and objectives were developed by reviewing the recreational needs assessment and identifying key themes from community input outlined in Chapter 3 and Chapter 4. These goals are common ideals of the community that can be achieved through the actions of government leaders, private organizations, and individual citizens.

Objectives specify in greater detail how these desired goals can be achieved. The goals and objectives provide a basis for establishing City policy regarding the planning, acquisition, and future development of park and recreation facilities. Specific recommendations and action plans for each objective are also identified later in this chapter.





GOAL ONE

Offer diverse recreational opportunities across all seasons that highlight Shawano's natural resources and support outdoor recreation tourism.

OBJECTIVES

- ▶ Develop premier mountain biking, cross-country skiing, and snowshoeing trails at the Murray Creek Nature Conservancy, providing regionally significant recreational opportunities that draw visitors year-round.
- ▶ Enhance the Mountain-Bay State Trail to provide an enjoyable experience for trail users and attract visitors from throughout the region.
- ▶ Integrate parks into the local tourism infrastructure to boost economic activity and create a seamless experience for tourists.
- ▶ Enhance and maintain a usable shoreline by expanding access points to the water, creating additional opportunities for the enjoyment of waterfront resources.

GOAL TWO

Coordinate housing development and roadway improvements with park and recreation planning in the City of Shawano.

OBJECTIVES

- ▶ Evaluate and develop plans for a new park along the Engel Drive corridor to accommodate anticipated residential growth, providing green space and recreational amenities for future residents.
- ▶ Ensure all users can safely navigate the City's park system via bicycle and pedestrian facilities.



GOAL THREE

Improve the condition of Shawano's existing park and recreation sites by upgrading infrastructure, enhancing maintenance, and improving accessibility to create vibrant public spaces.

OBJECTIVES

- ▶ Improve ball diamonds, ADA accessibility, and general facilities at Memorial Park to enhance performance, safety, and enjoyment for players and spectators.
- ▶ Activate the skate park area off of E Elizabeth Street to create a vibrant community space that serves as a connection between the Mountain-Bay State Trail and Memorial Park.
- ▶ Increase the capacity of the recreation center, provide improved facilities, and expand programming to meet the needs of all age groups.
- ▶ Develop Water Tower Park to provide a playground for the neighborhood west of downtown.
- ▶ Develop Channel Park with usable waterfront facilities.
- ▶ Improve the facilities at Judd Park to serve boaters and bicyclists.
- ▶ Update Eberlein Park to improve accessibility and accommodate future neighborhood growth.
- ▶ Replace aging facilities and improve sidewalk connectivity at Arlington Park.
- ▶ Make incremental improvements to existing park sites to maintain a quality park and recreation system.

PLAN RECOMMENDATIONS

The recommendations identified in this plan seek to enhance the recreational infrastructure in a way that meets current needs while anticipating future growth and changes in the community. Accompanying the plan's goals and objectives, the following recommendations serve as a guide for the future development of parks, trails, and recreation areas in the City of Shawano. The plan recommendations were drafted based on the findings from the recreational needs assessment, community input, discussions with City staff, and discussions with the Park and Recreation Commission.

Recommendations should be reviewed annually by the City of Shawano Parks and Recreation Commission as implementation will require ongoing effort, coordination among stakeholders, and adaptability to changing circumstances. Although some of the identified recommendations may not be feasible to complete in five years, they represent a course of action that the City should take if the opportunity arises. The recommendations are also included in the action program tables with additional timeline details. The action program tables list projects that are feasible for implementation from 2025 to 2029.



OFFER DIVERSE RECREATIONAL OPPORTUNITIES ACROSS ALL SEASONS THAT HIGHLIGHT SHAWANO'S NATURAL RESOURCES AND SUPPORT OUTDOOR RECREATION TOURISM.

OBJECTIVE 1-1. DEVELOP PREMIER MOUNTAIN BIKING, CROSS-COUNTRY SKIING, AND SNOWSHOEING TRAILS AT THE MURRAY CREEK NATURE CONSERVANCY, PROVIDING REGIONALLY SIGNIFICANT RECREATIONAL OPPORTUNITIES THAT DRAW VISITORS YEAR-ROUND.

Recommendations

- ▶ Perform a feasibility study and environmental site assessment to determine the viability and potential impacts of developing the site.
- ▶ Create a master plan for trail, restroom, and picnic facilities informed by the input from a coalition of community partners.

OBJECTIVE 1-2. ENHANCE THE MOUNTAIN-BAY STATE TRAIL TO PROVIDE AN ENJOYABLE EXPERIENCE FOR TRAIL USERS AND ATTRACT VISITORS FROM THROUGHOUT THE REGION.

Recommendations

- ▶ Develop master plan for better utilization of public space along the trail, improving the urban biking experience to promote regional bicycle tourism.
- ▶ Build a trailhead for the Mountain-Bay State Trail at Judd Park.
- ▶ Pave the trail from Main Street to Sturgeon Park to increase accessibility.
- ▶ Prioritize adding lighting, trees, native landscaping, garbage bins, and benches to the trail from Kadletz Street to Eberlein Park Drive.

OFFER DIVERSE RECREATIONAL OPPORTUNITIES ACROSS ALL SEASONS THAT HIGHLIGHT SHAWANO'S NATURAL RESOURCES AND SUPPORT OUTDOOR RECREATION TOURISM.

OBJECTIVE 1-3. INTEGRATE PARKS INTO THE LOCAL TOURISM INFRASTRUCTURE TO BOOST ECONOMIC ACTIVITY AND CREATE A SEAMLESS EXPERIENCE FOR TOURISTS.

Recommendations

- ▶ Execute the strategic marketing of park events through media campaigns and collaboration with local businesses.
- ▶ Partner with stakeholders to strategize and implement a series of winter park events, fostering community vibrancy during the off-peak season.
- ▶ Design City of Shawano park map flyers to distribute to local businesses and other stakeholders.
- ▶ Establish map kiosks highlighting park locations and events at key locations throughout the City.
- ▶ Build a refrigerated ice rink at Franklin Park to offer outdoor recreation in the winter near downtown.
- ▶ Explore a transfer of ownership of Sunset Island/Heritage Park, and evaluate the opportunity to build a multi-purpose venue, maximizing the views and economic potential of the island.

OBJECTIVE 1-4. ENHANCE AND MAINTAIN A USABLE SHORELINE BY EXPANDING ACCESS POINTS TO THE WATER, CREATING ADDITIONAL OPPORTUNITIES FOR THE ENJOYMENT OF WATERFRONT RESOURCES.

Recommendations

- ▶ Build public canoe/kayak launches at Pearl Court Park and Kuckuk Park with picnic facilities if needed.
- ▶ Control invasive species along shoreline and hillside at Kuckuk Park and Sturgeon Park.
- ▶ Build a boat wash facility at Huckleberry Harbor.
- ▶ Build a trail linking Sturgeon Park, Judd Park, and Kuckuk Park, enhancing connectivity between neighborhoods and providing residents and visitors with increased access to the waterfront.
- ▶ Replace existing trail with new asphalt and add lighting to trail at Kuckuk Park along shoreline.

COORDINATE HOUSING DEVELOPMENT AND ROADWAY IMPROVEMENTS WITH PARK PLANNING IN THE CITY OF SHAWANO.

OBJECTIVE 2-1. EVALUATE AND DEVELOP PLANS FOR A NEW PARK ALONG THE ENGEL DRIVE CORRIDOR TO ACCOMMODATE ANTICIPATED RESIDENTIAL GROWTH, PROVIDING GREEN SPACE AND RECREATIONAL AMENITIES FOR FUTURE RESIDENTS.

Recommendations

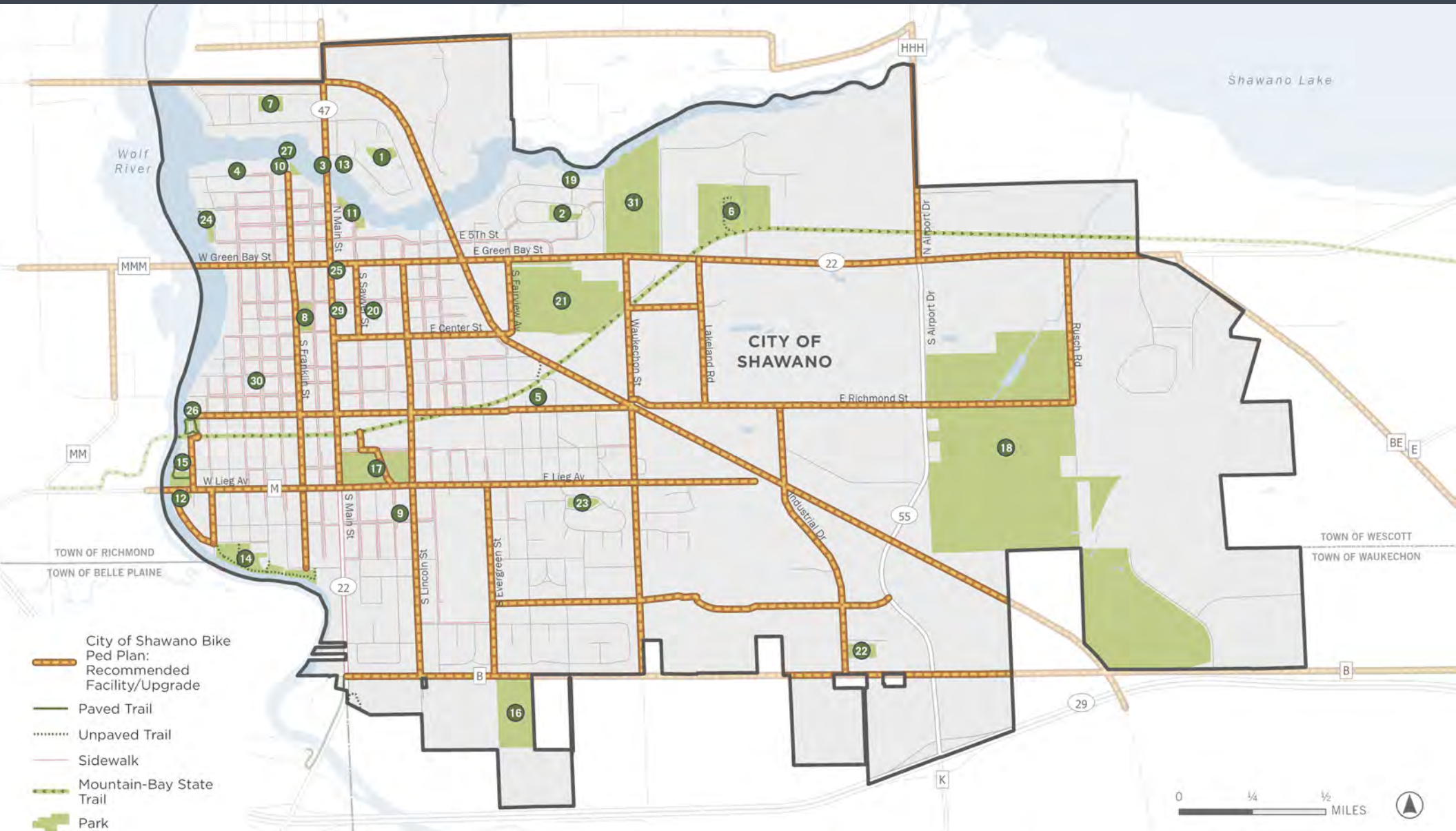
- ▶ Complete an updated park impact fee study.
- ▶ Identify park site and develop master plan.
- ▶ Conduct public outreach and engagement to gather community input, ensure that diverse perspectives are considered, and build broad support for the park development project.

OBJECTIVE 2-2. ENSURE ALL USERS CAN SAFELY NAVIGATE THE CITY'S PARK SYSTEM VIA BICYCLE AND PEDESTRIAN FACILITIES.

Recommendations

- ▶ Improve bicycle and pedestrian connectivity to the south with linkages to Shrank's Forest Hill Park, Don Martzke Park, and the Animal Recreation Facility.
- ▶ Improve bicycle and pedestrian connectivity to the east with linkages to Murray Creek Nature Conservancy, Eberlein Park, and the Mountain-Bay State Trail.
- ▶ Ensure bicycle and pedestrian connectivity to future parks.
- ▶ Implement the City of Shawano Bicycle and Pedestrian Plan recommended facilities, prioritizing safe routes to parks.

MAP 5-1. RECOMMENDED BICYCLE AND PEDESTRIAN FACILITIES



- | | | | | | | |
|----------------------|------------------|------------------------|------------------------------------|------------------------------|---------------------------|----------------------|
| 1 Alpine Shores Park | 6 Eberlein Park | 11 Huckleberry Harbor | 16 Martzke Park | 20 Recreation Center | 24 Smalley Park | 30 Water Tower Park |
| 2 Arlington Park | 7 Feivor Park | 12 Judd Park | 17 Memorial Athletic Field | 21 Shawano County Fair | 25 Spirit of Shawano Park | 31 Woodlawn Cemetery |
| 3 Channel Park | 8 Franklin Park | 13 Kleeman Family Park | 18 Murray Creek Nature Conservancy | 22 Shawano Dog Park (ARF) | 26 Sturgeon Park | |
| 4 Circle Drive Park | 9 Hartman Park | 14 Kuckuk Park | 19 Pearl Court Park | 23 Shrank's Forest Hill Park | 27 Sunset Island | |
| 5 Co-op Park | 10 Heritage Park | 15 Lieg Park | | | 29 The Naberhood | |

IMPROVE THE CONDITION OF SHAWANO'S EXISTING PARK AND RECREATION SITES BY UPGRADING INFRASTRUCTURE, ENHANCING MAINTENANCE, AND IMPROVING ACCESSIBILITY TO CREATE VIBRANT PUBLIC SPACES.

OBJECTIVE 3-1. IMPROVE BALL DIAMONDS, ADA ACCESSIBILITY, AND GENERAL FACILITIES AT MEMORIAL PARK TO ENHANCE PERFORMANCE, SAFETY, AND ENJOYMENT FOR PLAYERS AND SPECTATORS.

Recommendations

- ▶ Elevate the quality of the ball diamonds, restrooms, and buildings.
- ▶ Build new concession stand and facilities associated with the Varsity Baseball Diamond.
- ▶ Replace existing lighting at Varsity Baseball Diamond.
- ▶ Replace backstops and fencing.
- ▶ Create and implement tree planting plan.
- ▶ Remove unused lighting/poles.
- ▶ Build ADA accessible paved trails or sidewalk throughout the park connecting parking facilities, sports courts and fields, and the skatepark.

OBJECTIVE 3-2. ACTIVATE THE SKATE PARK AREA OFF OF E ELIZABETH STREET TO CREATE A VIBRANT COMMUNITY SPACE THAT SERVES AS A CONNECTION BETWEEN THE MOUNTAIN-BAY STATE TRAIL AND MEMORIAL PARK.

Recommendations

- ▶ Build a new skatepark with a pump track to replace existing skatepark, capitalizing on regional bicycle tourism from the Mountain-Bay State Trail.
- ▶ Involve local bikers and skaters with the process of design to ensure attractive and functional facilities while increasing long-term stewardship of the space.
- ▶ Identify a name for the skatepark and add clear, branded wayfinding signage.
- ▶ Add lighting, native landscaping, shade trees, and benches.

IMPROVE THE CONDITION OF SHAWANO'S EXISTING PARK AND RECREATION SITES BY UPGRADING INFRASTRUCTURE, ENHANCING MAINTENANCE, AND IMPROVING ACCESSIBILITY TO CREATE VIBRANT PUBLIC SPACES.

OBJECTIVE 3-3. INCREASE THE CAPACITY OF THE RECREATION CENTER, PROVIDE IMPROVED FACILITIES, AND EXPAND PROGRAMMING TO MEET THE NEEDS OF ALL AGE GROUPS.

Recommendations

- ▶ Remodel and expand the building to include indoor basketball, volleyball, and pickleball courts, and improved exercise room.
- ▶ Add additional zero entry indoor pool.
- ▶ Remodel locker room facilities.
- ▶ Build rooms for private meetings and classes.
- ▶ Replace outdoor basketball court.
- ▶ Replace parking lot.
- ▶ Add public access to high speed internet.
- ▶ Increase programming for youth, teens and adults.

OBJECTIVE 3-4. DEVELOP WATER TOWER PARK TO PROVIDE A PLAYGROUND FOR THE NEIGHBORHOOD WEST OF DOWNTOWN.

Recommendations

- ▶ Build a playground with facilities for toddlers and young children.
- ▶ Create ADA accessible sidewalk entrance to gain access to the park.
- ▶ Add picnic shelter and native landscaping.

IMPROVE THE CONDITION OF SHAWANO'S EXISTING PARK AND RECREATION SITES BY UPGRADING INFRASTRUCTURE, ENHANCING MAINTENANCE, AND IMPROVING ACCESSIBILITY TO CREATE VIBRANT PUBLIC SPACES.

OBJECTIVE 3-5. DEVELOP CHANNEL PARK WITH USABLE WATERFRONT FACILITIES.

Recommendations

- ▶ Build a trail along the riverfront, connecting the sidewalk to the coffee shop.
- ▶ Add a dock for fishing.
- ▶ Create small (two stall) parking area in place of current paved area.

OBJECTIVE 3-6. IMPROVE THE FACILITIES AT JUDD PARK TO SERVE BOATERS AND BICYCLISTS.

Recommendations

- ▶ Implement master plan with trail head.
- ▶ Construct a small open shelter near boat launch area of the park.
- ▶ Build restroom facilities, either seasonal or permanent.

IMPROVE THE CONDITION OF SHAWANO'S EXISTING PARK AND RECREATION SITES BY UPGRADING INFRASTRUCTURE, ENHANCING MAINTENANCE, AND IMPROVING ACCESSIBILITY TO CREATE VIBRANT PUBLIC SPACES.

OBJECTIVE 3-7. UPDATE EBERLEIN PARK TO IMPROVE ACCESSIBILITY AND ACCOMMODATE FUTURE NEIGHBORHOOD GROWTH.

Recommendations

- ▶ Conduct a wetland delineation study and subsequent master plan for the park, including the vacant land to the east of the park.
- ▶ Build new ADA accessible playground facilities for children of all abilities and ages.
- ▶ Build additional sports courts, including a volleyball court and basketball court.
- ▶ Improve bicycle and pedestrian connectivity from the park to multi-family developments and the Mountain-Bay State Trail.

OBJECTIVE 3-8. REPLACE AGING FACILITIES AND IMPROVE SIDEWALK CONNECTIVITY AT ARLINGTON PARK.

Recommendations

- ▶ Add pickleball and tennis courts.
- ▶ Add a basketball court.
- ▶ Conduct and implement a master plan for the park playground.
- ▶ Improve bicycle and pedestrian connectivity from the park to nearby neighborhoods and the Mountain-Bay State Trail.

IMPROVE THE CONDITION OF SHAWANO'S EXISTING PARK AND RECREATION SITES BY UPGRADING INFRASTRUCTURE, ENHANCING MAINTENANCE, AND IMPROVING ACCESSIBILITY TO CREATE VIBRANT PUBLIC SPACES.

OBJECTIVE 3-9. MAKE INCREMENTAL IMPROVEMENTS TO EXISTING PARK SITES TO MAINTAIN A QUALITY PARK AND RECREATION SYSTEM.

Recommendations

- ▶ Clean up stumps and remove/replace ash trees at Kleemann Family Park.
- ▶ Add a water fountain for dogs at the Animal Recreation Facility.
- ▶ Continue to add murals and art to public spaces.
- ▶ Change trash receptacles from “blue barrels” to punched steel/metal throughout the City.
- ▶ Maintain athletic fields, sports courts, playgrounds, mulch, and landscaping.

TABLE 5-1. CITY OF SHAWANO CORP 5-YEAR ACTION PROGRAM (PART ONE)

Park and Project	2025	2026	2027	2028	2029+
Murray Creek Nature Conservancy					
Conduct a Feasibility Study			X		
Conduct a Phase 1 Environmental Site Assessment			X		
Create a Master Plan				X	
Implement the Master Plan					X
Huckleberry Harbor					
Add a Boat Wash Facility	X				
Pearl Court Park					
Construct Canoe/Kayak Launch and Picnic Tables				X	
Sturgeon Park					
Construct a Trail Link to Judd Park and Kuckuk Park					X
Invasive Species Treatment and Maintenance	X		X		X
Judd Park					
Construct a Shelter				X	
Build Restroom Facilities				X	
Build a Trailhead for Mountain-Bay State Trail					X
Kuckuk Park					
Trail Lighting			X		
Trail Replacement			X		
Invasive Species Treatment and Maintenance	X		X		X
Construct Canoe/Kayak Launch	X				
Sunset Island/Heritage Park					
Conduct a City/County Strategic Plan and Event Space Economic Analysis	X				
Implement the Strategic Plan		X			
Memorial Park					
Improve Varsity Baseball Diamond Facilities		X			
Add ADA Accessible Trails and Paved Walks		X			
Renovate Restrooms		X			
Build New Concession Stand		X			
Replace Existing Lighting at Varsity Baseball Diamond		X			
Create and Implement Tree Planning Plan		X			
Remove Unused Lighting Poles		X			

TABLE 5-2. CITY OF SHAWANO CORP 5-YEAR ACTION PROGRAM (PART TWO)

Park and Project	2025	2026	2027	2028	2029+
Skate Park					
Build a Skate Park with Pump Track					X
Construct new Lighting					X
Plant Trees and Native Perennials					X
Recreation Center					
Remodel and Expand the Building: indoor basketball, volleyball, pickleball, and improved exercise area		X			
Remodel Locker Room Facilities		X			
Build Rooms for Private Meetings and Classes		X			
Replace Outdoor Basketball Court			X		
Replace Parking Lot		X			
Mountain-Bay State Trail					
Pave the Trail from Main Street to Sturgeon Park			X		
Add lighting, trees, native landscaping, garbage bins, and benches from Kadletz to Eberlein Park Drive		X			
Develop a Trail Tourism and Recreation Master Plan		X			
Implement the Tourism and Recreation Master Plan			X		
Franklin Park					
Build a Refrigerated or Synthetic Ice Rink					X
Water Tower Park					
Build a Neighborhood Playground		X			
Build ADA Accessible Park Entrance	X				
Add Picnic Shelter and Landscaping		X			
Channel Park					
Build a Riverfront Trail				X	
Construct a Dock				X	
Pave an Off -Street Parking Lot				X	
Arlington Park					
Construct Pickleball Courts	X				
Construct Tennis Courts	X				
Construct Basketball Court	X				
Construct Interpark Sidewalk Connecting New Amenities			X		
Create a Park Master Plan for Playground		X			
Implement the Park Master Plan			X		

TABLE 5-3. CITY OF SHAWANO CORP 5-YEAR ACTION PROGRAM (PART THREE)

Park and Project	2025	2026	2027	2028	2029
Eberlein Park					
Complete a wetland delineation study and master plan			X		
Build new ADA Playground				X	
Build Volleyball Court and Basketball Court				X	
Improve bicycle and pedestrian connectivity in park and neighborhood				X	
Kleemann Family Park					
Remove Stumps and Replace Ash Trees	X				
Animal Recreation Facility					
Build a Water Fountain for Dogs	X				
New Park					
Build a New Park for Expanding Residential Developments					X
Create a Master Plan					X
Projects Per Year	11	17	12	10	11

TABLE 5-4. WDNR KNOWLES-NELSON STEWARDSHIP LOCAL ASSISTANCE GRANT PROGRAMS

Program	Purpose	Funding Priorities	Details
Stewardship Local Assistance Acquisition and Development of Local Parks (ADLP) Subprogram	Helps communities and organizations acquire/develop/improve land for public nature-based outdoor recreation	<ul style="list-style-type: none"> • Support a local CORP; • Support multiple uses, for multiple seasons; • Are of regional/statewide significance; • Result in a first-of-a-kind facility for the applicant; • Projects that involve the use of materials or products utilizing Wisconsin recycled products; • Provides recreation opportunities for elderly, minorities, disabled, and low-income populations; • Project facility planned will be more basic in attributes than elaborate; • Projects to renovate existing facilities that are in danger of being lost for public use; • Provide accessible recreation opportunities; and • Have other priority characteristics specified in statute/code. 	<ul style="list-style-type: none"> • 50% local match; • May 1st deadline; and • Project must be identified in local CORP.
Stewardship Local Assistance Acquisition of Development Rights (ADR) Subprogram	Protect natural, agricultural, and forest lands that provide nature-based outdoor recreation by purchasing development rights and compensating landowners for limited future development on their land	<ul style="list-style-type: none"> • Land with water frontage; • Land that provides a buffer between developed and natural areas; • Land that connects existing natural resource protection areas; and • Land with other priority characteristics specified in statute/code. 	<ul style="list-style-type: none"> • 50% local match; • May 1st deadline; and • Project must be identified in local CORP.
Stewardship Local Assistance Urban Greenspace (UGS) Subprogram	Supports acquisition of land for open natural areas and community gardens within or near urban areas	<ul style="list-style-type: none"> • Preserves land on the natural heritage inventory database; • Implements elements of approved water quality plans or initiatives; • Has unique natural features; • Provides a linear corridor connecting open natural areas; • Has water frontage; • Is of regional or statewide significance; • Land related to brownfields redevelopment; • Land can accommodate all NBOA uses; hunting, fishing, trapping, hiking, and cross country skiing; • Provides area for community gardens; • Has other priority characteristics specified in statute/code; and • Involve two or more governmental agencies. 	<ul style="list-style-type: none"> • 50% local match; • May 1st deadline; and • Project must be identified in local CORP.
Stewardship Local Assistance Urban Rivers (UR) Subprogram	Helps restore and preserve the character of urban river corridors through the acquisition and development of land adjacent to rivers	<ul style="list-style-type: none"> • Restore river corridors following dam removal; • Support redevelopment of brownfields; • Acquire land with unique natural or aesthetic values; • Acquire land that connects with previous land acquisitions; • Provide outdoor recreation opportunities for diverse urban populations; • Provide new or expanded access to urban waterways; • Involve two or more governmental agencies; • Support local/regional plans; and • Have other priority characteristics specified in statute/code. 	<ul style="list-style-type: none"> • 50% local match; • May 1st deadline; and • Project must be identified in local CORP.

TABLE 5-5. FEDERAL RECREATION GRANT PROGRAMS

Program	Purpose	Funding Priorities	Details
Federal Land and Water Conservation Fund (LWCF)	Supports land acquisition and development of high-quality outdoor recreation amenities in local communities	<ul style="list-style-type: none"> • Meet the needs of urban areas; • Provide recreation opportunities for elderly, minority, disabled, and low-income populations; • Acquire land in areas with limited outdoor recreation facilities; • Provide multi-use and multi-season facilities; • Enhance or preserve natural beauty; • Are proposed by applicants which have sufficient financial resources to adequately maintain and operate the project; and • Have other priority characteristics specified in law/statute/code or the LWCF Federal Financial Assistance Manual, Vol. 72. 	<ul style="list-style-type: none"> • 50% local match; • May 1st deadline; and • Project must be identified in local CORP.
Federal Recreational Trails Program (RTP)	Provides funds to develop and maintain recreational trails and trail-related facilities for both motorized and non-motorized recreational trail uses	<ul style="list-style-type: none"> • Rehabilitation and maintenance of existing trails and trailhead facilities; • Development of new trails, trail linkages and trailhead facilities (some restrictions apply on federal lands); and • Acquisition of property for trails in areas with limited trail opportunities. 	<ul style="list-style-type: none"> • 50% local match; • May 1st deadline; and • Project must be identified in local CORP and SCORP.

TABLE 5-6. ALL WDNR DEPARTMENT GRANT PROGRAMS (PART ONE)

Program	Website
Angler Recruitment, Retention and Reactivation (R3) Grants	https://dnr.wisconsin.gov/Aid/angler.html
ARPA Well Abandonment	https://dnr.wisconsin.gov/aid/WellAbandonmentARPA.html
ARPA Well Compensation	https://dnr.wisconsin.gov/aid/WellCompensationARPA.html
ATV Enhancement	https://dnr.wisconsin.gov/Aid/atvEnhancement.html
ATV Patrols	https://dnr.wisconsin.gov/ATV/ATVPatrolGrants
ATV Trails	https://dnr.wisconsin.gov/Aid/atvTrails.html
Boat Patrol Grants	https://dnr.wisconsin.gov/Boat/BoatPatrolGrant
Boating Infrastructure Grant (BIG) Program	https://dnr.wisconsin.gov/Aid/BIG.html
Clean Diesel Grant Program	https://dnr.wisconsin.gov/Aid/CleanDiesel.html
Clean Vessel Act	https://dnr.wisconsin.gov/Aid/CleanVessel.html
County Conservation Aids	https://dnr.wisconsin.gov/Aid/CountyConservation.html
County Forest Acquisition (Stewardship)	https://dnr.wisconsin.gov/topic/stewardship/applyCounty
County Forest Acreage Share Payments	https://dnr.wisconsin.gov/topic/CountyForests/
County Forest Administration Grants	https://dnr.wisconsin.gov/Aid/ForestAdmin.html
County Forest Sustainable Grant	https://dnr.wisconsin.gov/Aid/ForestSustainable.html
County Forest Wildlife Habitat Grant	https://dnr.wisconsin.gov/Aid/ForestHabitat.html
Dam - Municipal	https://dnr.wisconsin.gov/Aid/DamMunicipal.html
Dam - Removal	https://dnr.wisconsin.gov/Aid/DamRemoval.html
Dry Cleaner Environmental Response Fund (DERF)	https://dnr.wisconsin.gov/Aid/DERF.html
Emerging Contaminants - Small/Disadvantaged Communities Grant Program (EC-SDC)	https://dnr.wisconsin.gov/aid/EC-SDC.html
Forest Fire Protection (FFP)	https://dnr.wisconsin.gov/Aid/ForestFireProtection.html
Forest Landowner Grant Program (WFLGP)	https://dnr.wisconsin.gov/Aid/ForestLandowner.html
Friends of State Parks (Stewardship)	https://dnr.wisconsin.gov/topic/stewardship/ApplyFriends
Friends of State Parks and Forests (Heritage Trust Fund)	https://dnr.wisconsin.gov/topic/parks/friends/grants/heritagetrust
Habitat Area (Stewardship)	https://dnr.wisconsin.gov/topic/stewardship/applyNCO
Hunter R3 (Recruitment, Retention and Reactivation) Grant Program	https://dnr.wisconsin.gov/Aid/HunterRecruit.html
Landowner Incentive Program	https://dnr.wisconsin.gov/topic/endangeredresources/lip.html
Motorized Stewardship Grants	https://dnr.wisconsin.gov/Aid/MotorStew.html
Municipal Flood Control	https://dnr.wisconsin.gov/Aid/MunFloodControl.html
Natural Areas (Stewardship)	https://dnr.wisconsin.gov/topic/stewardship/applyNCO
Notice of Intent/Discharge Cost-Share Grants (NOD)	https://dnr.wisconsin.gov/Aid/NOD.html

TABLE 5-7. ALL WDNR DEPARTMENT GRANT PROGRAMS (PART TWO)

Program	Website
Off-Highway Motorcycle	https://dnr.wisconsin.gov/Aid/OHMTTrails.html
Ready for Reuse Hazardous Substance Grants	https://dnr.wisconsin.gov/topic/Brownfields/rlfHaz.html
Ready for Reuse Petroleum Grants	https://dnr.wisconsin.gov/topic/Brownfields/rlfPetro.html
Recreational Boating Facilities	https://dnr.wisconsin.gov/topic/Brownfields/rlfPetro.html
Recycling Consolidation Grant	https://dnr.wisconsin.gov/Aid/Consolidation.html
Recycling Grant to Responsible Units	https://dnr.wisconsin.gov/Aid/Recycling.html
Shooting Range Grants	https://dnr.wisconsin.gov/Aid/ShootingRange.html
Snowmobile Trail Aids	https://dnr.wisconsin.gov/Aid/SnowmobileTrails.html
Snowmobile Patrols	https://dnr.wisconsin.gov/Snowmobile/SnowPatrolGrant
Sport Fish Restoration (SFR) - Boat Access	https://dnr.wisconsin.gov/Aid/SFR-BA
Sport Fish Restoration (SFR) - Fishing Piers	https://dnr.wisconsin.gov/Aid/SFR-FP
Stamp Funds - Wild Turkey, Pheasant and Waterfowl	https://dnr.wisconsin.gov/topic/WildlifeHabitat/stamps.html
State Trails (Stewardship)	https://dnr.wisconsin.gov/topic/stewardship/applyNCO
Streambank Protection (Stewardship)	https://dnr.wisconsin.gov/topic/stewardship/applyNCO
Summer Tribal Youth Program	https://dnr.wisconsin.gov/Aid/styp.html
Surface Water Grants	https://dnr.wisconsin.gov/Aid/SurfaceWater.html
Targeted Runoff Management Grants	https://dnr.wisconsin.gov/Aid/TargetedRunoff.html
Underserved Drinking Water System	https://dnr.wisconsin.gov/aid/udws
Urban Forestry	https://dnr.wisconsin.gov/topic/UrbanForests/grants/index.html
Urban Forestry Catastrophic Storm Grant	https://dnr.wisconsin.gov/topic/UrbanForests/grants/index.html
Urban Nonpoint Source & Storm Water Management Grants	https://dnr.wisconsin.gov/Aid/UrbanNonpoint.html
Urban Wildlife Damage/Abatement Control	https://dnr.wisconsin.gov/Aid/UWDAC.html
Utility Terrain Vehicle (UTV) Trails	https://dnr.wisconsin.gov/Aid/UTVTrails.html
Weed Management Area - Private Forest Grant Program (WMA-PFGP)	https://dnr.wisconsin.gov/Aid/WMA.html
Well Abandonment	https://dnr.wisconsin.gov/Aid/WellAbandonment.html
Well Compensation	https://dnr.wisconsin.gov/Aid/WellCompensation.html
Wildlife Damage Abatement and Claims Program	https://dnr.wisconsin.gov/Aid/WDACP.html
Wisconsin Assessment Monies (WAM)	https://dnr.wisconsin.gov/topic/brownfields/wam.html
Wisconsin Habitat Partnership Fund	https://dnr.wisconsin.gov/aid/whpf.html
Wisconsin Wetland Conservation Trust in Lieu Fee Mitigation Program (WWCT)	https://dnr.wisconsin.gov/topic/wetlands/wwct

TABLE 5-8. OTHER FEDERAL, STATE, AND COMMUNITY GRANT PROGRAMS

Program	Partner	Purpose	Website
Surface Transportation Block Grant program (STBG)	Wisconsin Department of Transportation	Provides flexible funding that may be used by States and localities for projects to preserve and improve the conditions and performance on any Federal-aid highway, bridge and tunnel projects on any public road, pedestrian and bicycle infrastructure, and transit capital projects, including intercity bus terminals	https://www.fhwa.dot.gov/specialfunding/stp/
Highway Safety Improvement Program (HSIP)	Wisconsin Department of Transportation	Develop and implement, on a continuing basis, stand-alone safety projects designed to reduce the number and severity of crashes on all streets and highways	https://safety.fhwa.dot.gov/hsip/
Safe Routes to School (SRTS) Grant Program	East Central Wisconsin Regional Planning Commission	Provides funding and programming for bicycle and pedestrian activities to promote walking and biking to school	https://eastcentralsrts.org/
Community Development Block Grant program (CDBG)	Wisconsin Department of Administration	Provides annual grants to develop decent housing and a suitable living environment, expanding economic opportunities for low- and moderate-income people	https://doa.wi.gov/DECHR/DEHCR%20CDBG%20Brochure.pdf
Community Facilities Direct Loan and Grant Program	U.S. Department of Agriculture	Provides affordable funding to develop essential community facilities (e.g. health care, street improvements, community centers, libraries, community gardens) in rural areas with no more than 20,000 residents	https://www.rd.usda.gov/programs-services/community-facilities/community-facilities-direct-loan-grant-program-16
Rural Community Development Initiative Grants	U.S. Department of Agriculture	Support housing, community facilities and community and economic development projects in rural areas	https://www.rd.usda.gov/programs-services/community-facilities/rural-community-development-initiative-grants
Environmental Education (EE) Grants	U.S. Environmental Protection Agency	Provides financial support for projects that design, demonstrate, and/or disseminate environmental education practices, methods, or techniques	https://www.epa.gov/education/grants
Shawano Area Community Foundation Grants	Shawano Area Community Foundation	Preserve and improve the quality of life in Shawano and the surrounding area (affiliate of the Community Foundation for the Fox Valley Region)	https://www.cffoxvalley.org/partners/our-partner-funds/shawano-area-community-foundation/

Play Communication Board

Pictures help us communicate with everyone!



6

RESOLUTION OF ADOPTION

he	she	play	sit	stand	up	happy	sad	mad	monkey bars	spinner	hide and seek		
I	you	listen	talk	eat	drink	hungry	tired	slippery	wearing a wig	scared	bench	home	bike
the	my	you	you	you	you	dirty	he	she	she	she	she	she	she
friends	it	go	stop	run	walk	quiet	heavy	fun	wet	redneck	car	leave	sandbox
parents	chase	climb	fall	push	break	loud	cold	slow	fast	please	thank you	more	all done
?	?	?	?	?	?	?	?	?	?	?	?	?	?
who	what	where	when	why	how	later	what time is it	yes	no	my turn	your turn	hello	goodbye
1	2	3	4	5	6	7	8	9	0				I'm sorry
A	B	C	D	E	F	G	H	I	J	K	L	M	
N	O	P	Q	R	S	T	U	V	W	X	Y	Z	

PCS is a trademark of Tobii Dynavox LLC. All rights reserved. Used with permission.



City of Shawano
127 S Sawyer Street, Shawano, WI 54166
(715) 526-6138 Fax: (715) 526-5751

RESOLUTION NO. 86-24

SPONSORED BY: Park & Recreation and Plan Commissions
INTRODUCED BY: Hauer
SECONDED BY: Barkow

**CITY OF SHAWANO COMPREHENSIVE
OUTDOOR RECREATION PLAN**

WHEREAS, the City of Shawano has requested the development of a communitywide open space and recreation plan; and

WHEREAS, the City of Shawano Park and Recreation Commission on September 18, 2024 and City of Shawano Plan Commission on August 28, 2024 have recommended Common Council adoption of the attached 2025-2029 City of Shawano Comprehensive Outdoor Recreation Plan (CORP); and

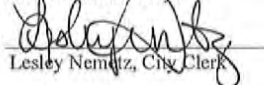
WHEREAS, the CORP encompasses a general outline and plan for the recreational development of Shawano's park system until the year 2029; and

WHEREAS, adoption of said plan is required for the City of Shawano to become eligible for cost sharing aid programs from the State of Wisconsin.

NOW, THEREFORE, BE IT RESOLVED by the Common Council of the City of Shawano that the attached 2025-2029 City of Shawano Comprehensive Outdoor Recreation Plan (CORP) be adopted as the approved recreation plan for the City of Shawano.

Adopted: October 9, 2024

Signed: 
Bruce Mjilavitz, Mayor

Signed: 
Lesley Nemitz, City Clerk

Resolution of
Adoption



City of Shawano

127 S Sawyer Street, Shawano, WI 54166

Phone: 715-526-6138 | Fax: 715-526-5751

