



2025-2029

TOWN OF BUCHANAN

COMPREHENSIVE OUTDOOR RECREATION PLAN



TOWN OF BUCHANAN

**COMPREHENSIVE OUTDOOR
RECREATION PLAN 2025-2029**

ADOPTED SEPTEMBER 17TH, 2024

ACKNOWLEDGEMENTS

TOWN BOARD

Joe Coenen, *Town Chairperson*
Karen Lawrence, *Supervisor I*
Paul Knuppel, *Supervisor II*
Chuck Kavanaugh, *Supervisor III*
Tom Meyer, *Supervisor IV*

PARKS COMMITTEE

Meghan Huss
Tom Meyer
Brian Regal

TOWN OF BUCHANAN

Michael J.D. Brown, *Town Administrator*

EAST CENTRAL WISCONSIN REGIONAL PLANNING COMMISSION

Rachel Roth, *GIS Analyst*
Joe Stephenson, *Senior Planner*

TABLE OF CONTENTS

CHAPTERS

- 06 Chapter 01. Introduction
- 14 Chapter 02. Recreational Resources
- 30 Chapter 03. Recreational Needs
- 42 Chapter 04. Community Voice
- 52 Chapter 05. Goals and Recommendations
- 72 Chapter 06. Resolution of Adoption

MAPS

- 10 Map 1-1. Town of Buchanan Location
- 12 Map 1-2. Community Overview
- 26 Map 2-1. Bicycle and Pedestrian Facilities
- 28 Map 2-2. Natural Resources
- 37 Map 3-1. Residential Areas Served by a Park
- 51 Map 4-1. Interactive Map Results
- 64 Map 5-1. Recommended Bicycle and Pedestrian Facilities

FIGURES

- 09 Figure 1-1. Plan Timeline
- 11 Figure 1-2. Town of Buchanan Quick Facts
- 31 Figure 3-1. Recreational Needs Assessment Components
- 33 Figure 3-2. Population Trends and Projections (2000-2040)
- 33 Figure 3-3. Median Age Trends (2010, 2022)
- 36 Figure 3-4. Acres of Parkland per 1,000 Residents (Communities <20,000 residents)

TABLE OF CONTENTS

FIGURES

36	Figure 3-5. Number of Residents per Park (Communities <20,000 residents)
38	Figure 3-6. Demographics of Residents In and Out of Park Service Areas
44	Figure 4-1. Demographics of Survey Respondents
45	Figure 4-2. Q1 Results
45	Figure 4-3. Q2 Results
46	Figure 4-4. Q3 Results
47	Figure 4-5. Q4 Results
47	Figure 4-6. Q5 Results
48	Figure 4-7. Q6 Results
49	Figure 4-8. Q7 Results
50	Figure 4-9. Map Comment Types

TABLES

16	Table 2-1. Town of Buchanan Park Classification Definitions
23	Table 2-2. Town of Buchanan Park Matrix
32	Table 3-1. Population Trends and Projections (2000-2040)
34	Table 3-2. Town of Buchanan Park Facilities By Prevalence and Population per Facility
35	Table 3-3. Estimated Change in Statewide Participation in Nature-Based Activities (2020-2040)
40	Table 3-4. Outagamie County Key Health Metrics (2024)
66	Table 5-1. Town of Buchanan CORP 5-Year Action Program
67	Table 5-4. WDNR Knowles-Nelson Stewardship Local Assistance Grant Programs
68	Table 5-5. Federal Recreation Grant Programs
69	Table 5-6. WDNR Department Grant Programs (Part One)
70	Table 5-7. WDNR Department Grant Programs (Part Two)
71	Table 5-8. Other Federal, State, and Community Grant Programs

1

INTRODUCTION



INTRODUCTION

PLAN PURPOSE

The Town of Buchanan Comprehensive Outdoor Recreation Plan (CORP) is updated every five years, serving as a 20-year strategic guide for the development of parks, open spaces, and recreation activities in the Town. The purpose of this document is to assess current park conditions, plan for future park improvements, and establish goals and objectives for implementation.

In addition, approving this plan will allow the Town to participate in the Knowles-Nelson Stewardship Program, administered by the Wisconsin Department of Natural Resources (DNR). This program provides up to 50 percent matching funds for the acquisition and development of parkland. An update of the CORP is required every five years to be eligible for these grants.



PLAN VISION

CREATE AN OUTDOOR RECREATION SYSTEM THAT MEETS THE NEEDS OF ALL CITIZENS AND IS A POINT OF CIVIC PRIDE FOR THE TOWN OF BUCHANAN.

PAST, PRESENT, AND FUTURE PLANNING

This is Buchanan’s fourth comprehensive outdoor recreation plan, but its first since forming a permanent Parks Committee to specifically oversee park projects and improvements in July of 2022. The first CORP was adopted by the Town Board for the years 2009-2012, the second from 2013-2017, and most recently from 2018-2022. It is the goal of both the Town Board and the Parks Committee to maximize grant availability to assist in park project funding, so the current document is being updated to cover the years 2025-2029.

PARKS COMMITTEE

The Town Board did not sit idly on its hands during the time between the expiration of the prior CORP and the adoption of this one. In fact, it took significant steps to prioritize improvements to the Town’s parks. In 2022, it created a permanent Parks Committee which meets monthly and reports directly to the Town Board. The Committee membership is made up of interested Town citizens who serve two-year terms.

In addition to creating the Committee, the Board substantially increased the budget allocation dedicated to improvements to parks. Throughout 2023 the Parks Committee undertook the planning process to map out improvements to Springfield Park. A master plan was approved by the Board and phase one of that plan was completed in the fall of 2023. The 2024 budget includes funding for the completion of Phase 2 of that project which includes new basketball, tennis, and pickleball courts, a paved trail connecting the park to nearby residential streets, and all new play equipment.

The objective of the Town over the next five years is to make substantial improvements to its other two neighborhood parks, as well as further develop a trail system that will allow for simpler and safer transportation and outdoor recreation options within the community.

EXISTING PLAN REVIEW

In addition to reviewing previously adopted CORPs¹, the documents listed below have influenced the preliminary research and final recommendations in the Town of Buchanan CORP update.

PARKS AND RECREATIONAL NEEDS ASSESSMENT

In 2009, a needs assessment study was conducted in order for Buchanan to enact an impact fee on new development for the funding of park acquisition, improvement and development.

TOWN OF BUCHANAN COMPREHENSIVE PLAN

The Comprehensive Plan for the Town of Buchanan was updated and adopted in 2018. This long-range plan covers a variety of topics such as housing, transportation, land use, and environmental resources.²

APPLETON (FOX CITIES) MPO/OUTAGAMIE COUNTY BICYCLE AND PEDESTRIAN PLANS

These plans were adopted in 2021 and 2023 and examine ways to connect communities to each other via bicycle and pedestrian infrastructure, creating a balanced network for all transportation modes.^{3,4}

WISCONSIN STATEWIDE COMPREHENSIVE OUTDOOR RECREATION PLAN

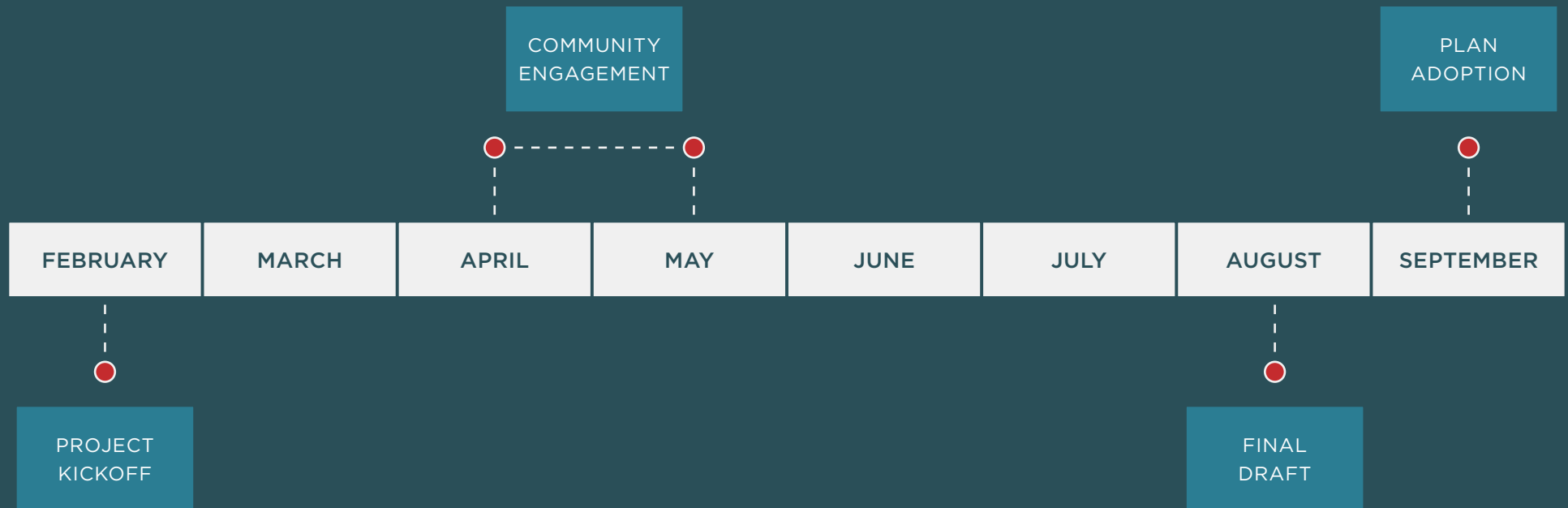
The 2019-2023 iteration of the Wisconsin Statewide Comprehensive Outdoor Recreation Plan (SCORP) provides recommendations to guide public outdoor recreation policy and planning decisions.⁵ This plan includes results from a statewide survey regarding outdoor recreation participation and frequency, as well as opinions about future needs.

PLAN PROCESS

The Town of Buchanan contracted with East Central Wisconsin Regional Planning Commission (ECWRPC) to facilitate the update of the Comprehensive Outdoor Recreation Plan. A project kickoff meeting was held on February 13th, 2024 with the Town of Buchanan Parks Committee, Town Administrator Michael Brown, and ECWRPC staff. Community engagement efforts took place from April 1st, 2024 to May 31st, 2024 via a project website, survey, and interactive map. The survey generated 91 responses, and the interactive map generated 20 responses. Community feedback is analyzed in detail in Chapter Four: Recreational Needs.

ECWRPC staff then worked with the Parks Committee to list goals and opportunities for the plan, incorporating key themes identified during community engagement efforts. The Parks Committee assisted in writing and reviewing plan chapters, as well as refining plan recommendations. A draft of the plan was completed on August 30th, 2024. Following review and comment by the Parks Committee, the Town Board, and the public, the final plan was adopted by the Town Board on September 17th, 2024.

FIGURE 1-1. PLAN TIMELINE



ABOUT BUCHANAN

The Town of Buchanan is an eclectic growing community in a state of uncertain transition. Buchanan's west side is urbanized, bordering the City of Appleton, and its east side is predominantly farm land.

Its citizens have deeply held divergent beliefs about what balance should be struck between embracing its historical roots as an agricultural area and modernizing its infrastructure. These disagreements have played out in Wisconsin's court system over the last several years and created a sharply divided local political environment. Uniting all sides though is a common sense of civic pride and desire for improvement.

A concerted and consensus-based effort to improve Buchanan's parks over the next five years presents a wonderful opportunity to build a unified sense of community in something that all Buchananes can use and enjoy together for decades to come.

SOCIAL AND PHYSICAL CHARACTERISTICS

Located in Outagamie County, the Town of Buchanan spans 14.8 square miles with a total population of 6,833 people. Since 1980, the population of the Town of Buchanan has grown at a rate 7 times faster than that of Outagamie County as a whole.²

With significant access to water resources, the Fox River winds along the northwest border of the Town. The majority of land adjacent to the Fox River is utilized for residential or agricultural purposes. Additional demographic statistics for the Town are provided in Figure 1-2. An overview of the community is shown in Map 1-2.

MAP 1-1. TOWN OF BUCHANAN LOCATION

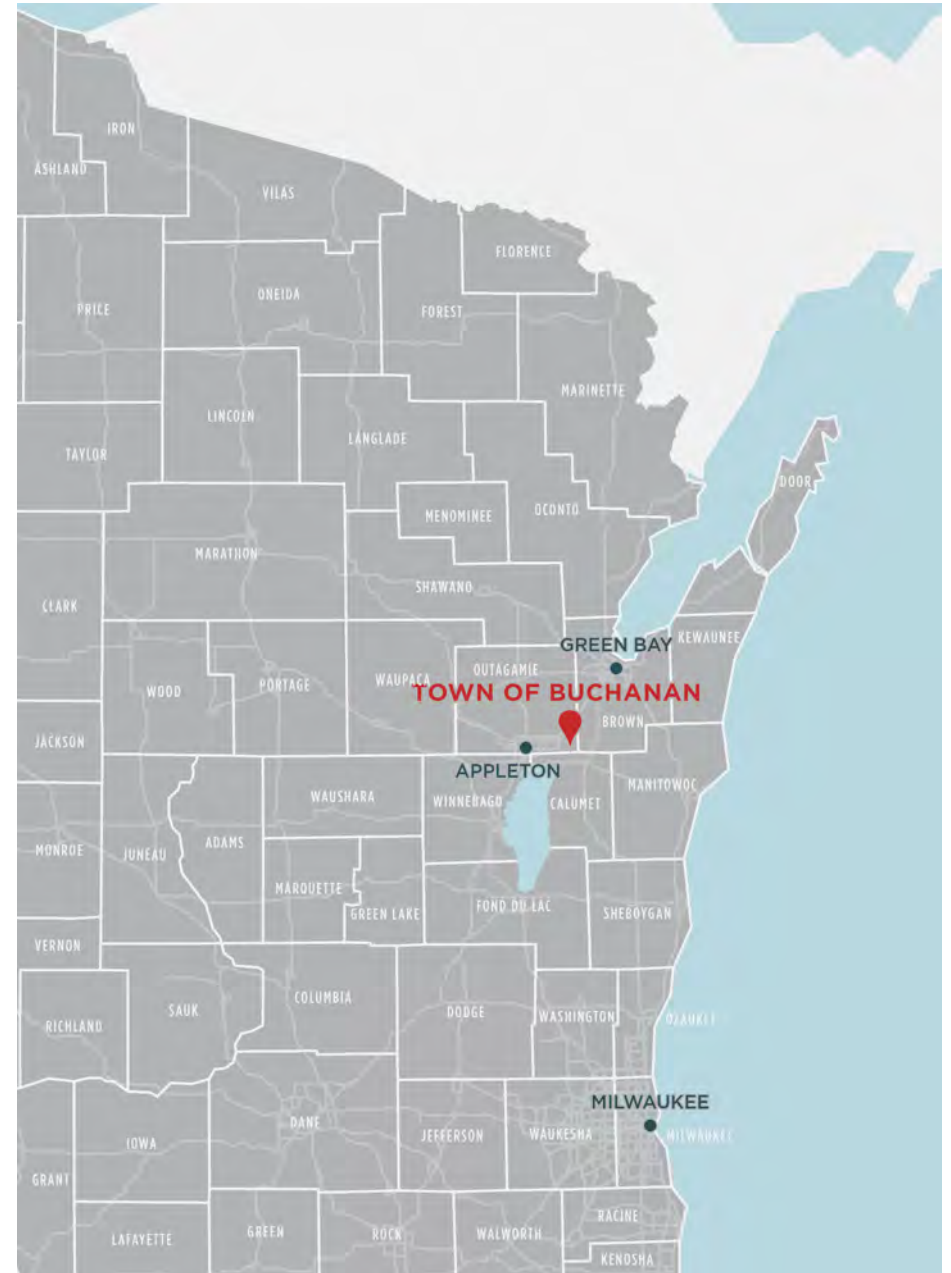
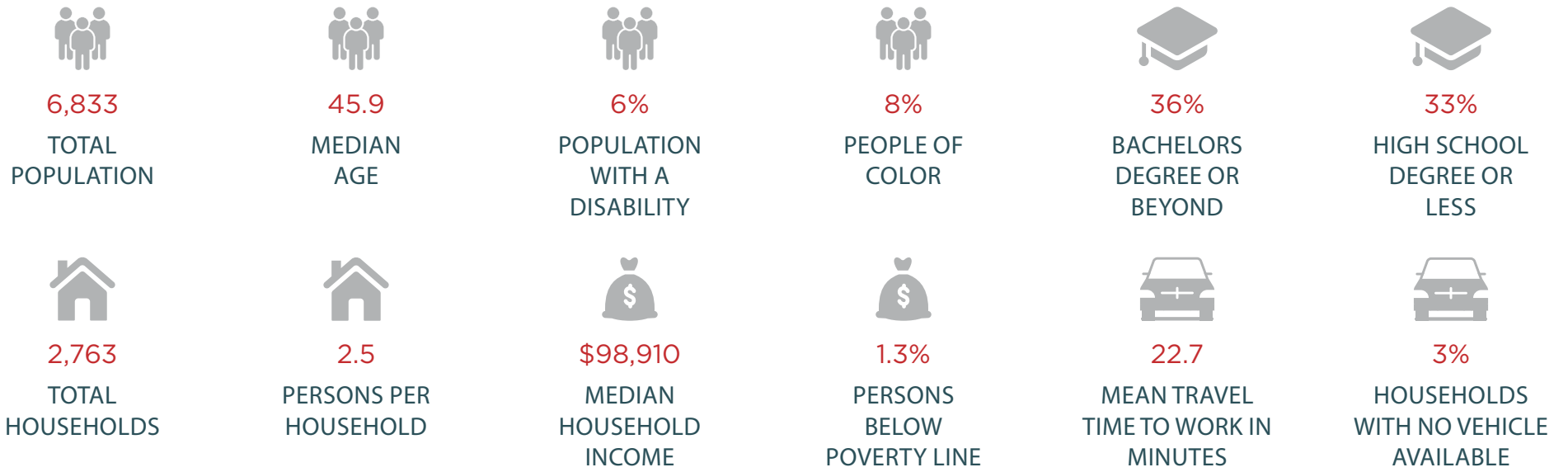
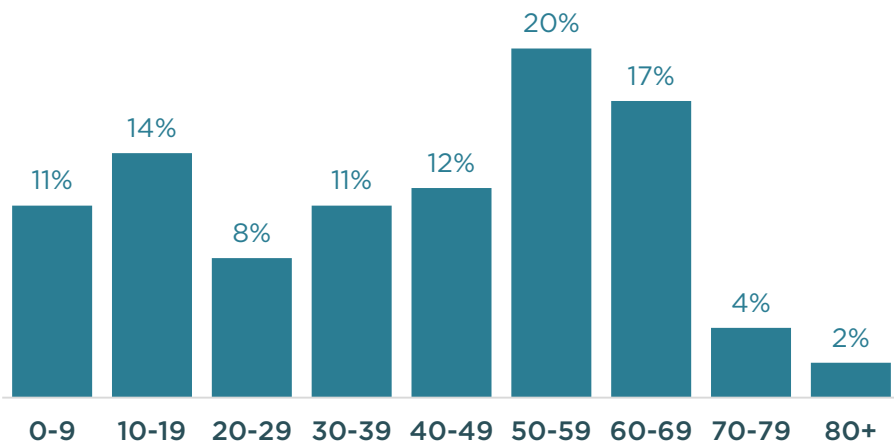


FIGURE 1-2. TOWN OF BUCHANAN DEMOGRAPHICS

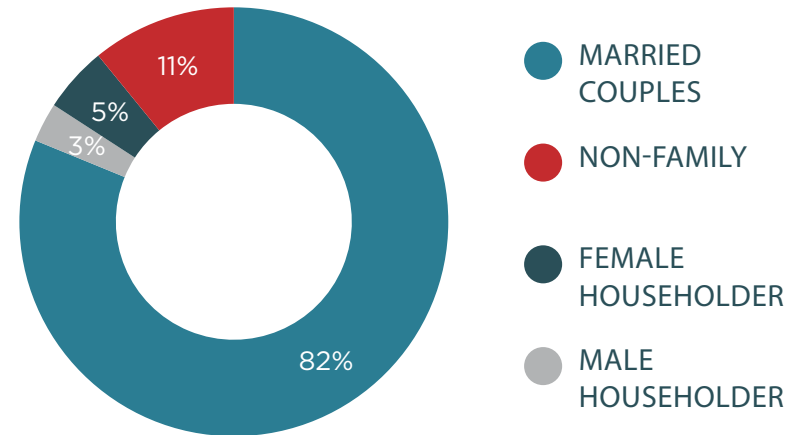


POPULATION BY AGE RANGE

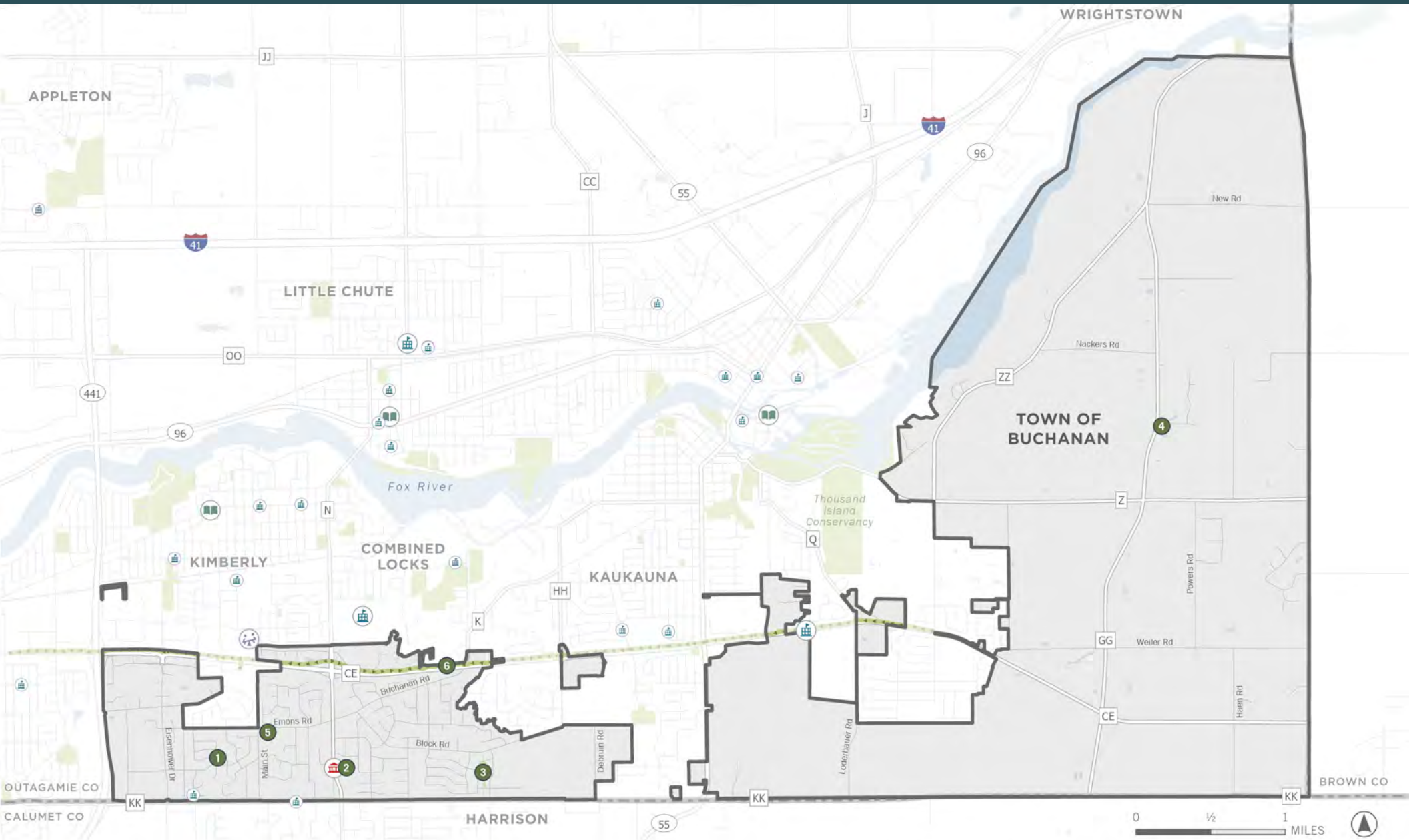


Source: ACS 2022 5-Year Estimates

POPULATION BY HOUSEHOLD TYPE



MAP 1-2. COMMUNITY OVERVIEW



- | | | | | |
|---------------------------|--|----------|--------------------|-----------------------------|
| 1 Springfield Park | 4 Historic Bridge Area | CE Trail | Buchanan Town Hall | Elementary or Middle School |
| 2 Town Hall Park | 5 Main St Pond Trail | Park | Library | High School |
| 3 Hickory Park | 6 CE Trail Underpass (Buchanan) | | YMCA | |

CHAPTER ONE ENDNOTES

¹ *Town of Buchanan Comprehensive Outdoor Recreation Plan 2018-2022*. Town of Buchanan. 2017. <https://www.townofbuchanan.org/home/showpublisheddocument/154/637388989152970000>

² *Town of Buchanan Comprehensive Plan Update 2040*. Town of Buchanan. 2018. <https://www.townofbuchanan.org/home/showpublisheddocument/1566/638548940721770000>

³ *Appleton (Fox Cities) Transportation Management Area and Oshkosh Metropolitan Planning Organization Bicycle and Pedestrian Plan - 2021*. East Central Wisconsin Regional Planning Commission. 2021. <https://www.ecwrpc.org/wp-content/uploads/2022/03/2021-Appleton-TMA-and-Oshkosh-MPO-Bicycle-and-Pedestrian-Plan.pdf>

⁴ *Outagamie County Bicycle and Pedestrian Plan*. Outagamie County. 2023. <https://www.outagamie.org/home/showpublisheddocument/99399/638404091912600000>

⁵ *Wisconsin Statewide Comprehensive Outdoor Recreation Plan 2019-2023*. Wisconsin Department of Natural Resources. 2019. <https://dnr.wisconsin.gov/topic/fl/PropertyPlanning/Scorp>





2

RECREATIONAL RESOURCES

RECREATIONAL RESOURCES

EXISTING PARK FACILITIES

The Town of Buchanan is home to several well-maintained parks that cater to a variety of recreational needs for residents. Hickory Park, Springfield Park, and Town Hall Park feature amenities ranging from playgrounds to sports courts. Additionally, the town boasts natural resources like the Main Street Pond, which provides a scenic green space with trails and picnic spots.

The Town also prioritizes maintaining natural areas along creeks and the Fox River, preserving woodland areas and protecting water quality. These resources, along with a network of trails, enhance the Town's recreational offerings, foster a thriving community, and ensure accessible and diverse outdoor experiences for all residents.



PARK CLASSIFICATIONS

The National Recreation and Park Association’s (NRPA) Park, Recreation, Open Space and Greenway Guidelines offer standard definitions for park classifications.¹ However, much has changed since the NRPA published this document in 1996. Today, each community must determine its own standards, level of service (LOS) metrics, and long-range vision for its parks and recreation system based on community issues, values, needs, priorities and available resources.² Table 2-1 summarizes Buchanan's park classification system. The definitions are generally modified from the NRPA classifications to meet the Town's needs.

Individual park classifications should be reviewed and adjusted if necessary when new facilities are added, parklands are purchased, or recreation programs are changed. Also identified below are general level of service standards. A park’s level of service is the accepted distance that the average park user will travel from their home to get to that recreation destination. LOS standards can help measure how accessible the park system is to a community’s residents. Park service areas and the park system are analyzed in more detail in Chapter 3: Recreational Needs.

TABLE 2-1. TOWN OF BUCHANAN PARK CLASSIFICATION DEFINITIONS

Classification	Definition	Size	Level of Service
Community Park	Designed to serve a broad segment of the community and provide a wide range of recreational activities. Often host organized sports leagues and are generally located in areas that are easily accessible near major roads and trails.	20+ acres	2 miles
Neighborhood Park	Basic unit of the park system, intended to serve the immediate neighborhood and a variety of age groups. Often include playground facilities, open play areas, shelters, sports courts, and toilet facilities.	1 - 20 acres	0.5 miles
Mini Park	Serve a very localized area, offering distinct recreational opportunities for nearby residents. Facilities may include playgrounds, open play areas, and benches. Amenities are limited due to size, and off-street parking is not necessary.	0.25 - 1 acre	0.25 miles
Green Space	Properties designated as parks that have few or no built facilities, but provide public open space to the local neighborhood that can be utilized for passive recreation. Facilities may include benches, open play areas, and trails.	0.25 - 10 acres	0.25 miles
Nature Conservancy	Lands designated for the protection of the natural environment and wildlife habitat. Personal recreation is a secondary objective with limited to no developed facilities.	10+ acres	1 mile
Special Facility Park	Designed to cater to specific activities or interests beyond general recreational purposes. Often include specialized equipment or infrastructure such as kayak/canoe launches, dog agility equipment, or historical sites.	1 - 20 acres	1 mile
Greenways and Trails	Lands that effectively tie park system components together to form a continuous park environment, primarily serving bicyclists and pedestrians.	Variable	Variable
Private Facilities	Parks and recreation facilities that are privately owned yet contribute to the public parks and recreation system. Facilities may include golf courses, racetracks, gyms, or parks at private schools.	Variable	Variable



PARK TYPE

Neighborhood Park

OVERVIEW

Hickory Park is a 5.02 acre park that was dedicated to the Town in 1995 as part of the Hickory Estates Subdivision. The park serves the 195 lot subdivision, as well as neighboring residential areas. The park is located between Briarwood Drive and State Park Road, just north of CTH KK.

FACILITIES AND AMENITIES

- ▶ Basketball Court
- ▶ Benches
- ▶ Open Playfield
- ▶ Parking
- ▶ Picnic Tables
- ▶ Playground
- ▶ Portable Restrooms
- ▶ Shelter
- ▶ Signage
- ▶ Soccer
- ▶ Tennis Courts (2)
- ▶ Trail



PARK TYPE

Neighborhood Park

OVERVIEW

Springfield Park is a 2.0 acre park located on Springfield Drive near Just About Lane in the west central portion of the Town. The park was developed in 1997 with Town funds, and was recently significantly upgraded. The park has a new playground, parking lot, and sport courts.

FACILITIES AND AMENITIES

- ▶ Basketball Court
- ▶ Benches
- ▶ Open Playfield
- ▶ Parking
- ▶ Pickleball Courts (2)
- ▶ Picnic Tables
- ▶ Playground
- ▶ Portable Restrooms
- ▶ Signage
- ▶ Tennis Court



PARK TYPE

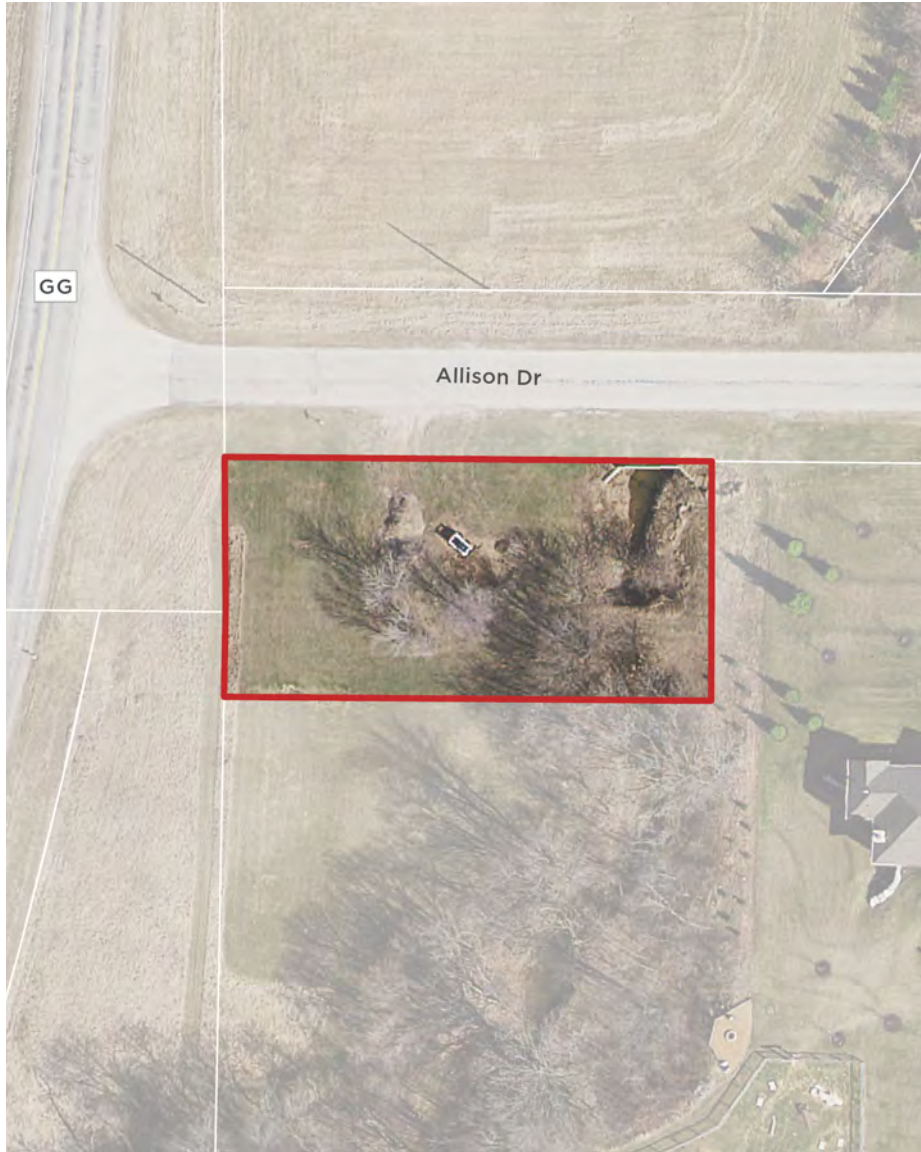
Neighborhood Park

OVERVIEW

Town Hall Park is located on a 3.13 acre site adjacent to the Town Hall on CTH N. The facility shares parking with the Town Hall and is designed to utilize restrooms in the Town Hall during special park events. Small open play areas are situated in the northern and eastern portions of the park which have been used as non-regulation soccer facilities. A paved walkway provides access to the park from the neighborhood to the east. An unpaved trail also runs through the park.

FACILITIES AND AMENITIES

- ▶ Basketball Court
- ▶ Benches
- ▶ Open Playfield
- ▶ Parking
- ▶ Picnic Tables
- ▶ Playground
- ▶ Permanent Restrooms
- ▶ Tennis Court
- ▶ Trail



PARK TYPE

Green Space

OVERVIEW

The Town of Buchanan was dedicated a small site located off of CTH GG. The site contains a small historic stone bridge. The site was originally planned for a small parking area and picnic area, but no improvements have been completed to date. The site is currently overgrown and not available for public use. The size of the site is 0.41 acres.

FACILITIES AND AMENITIES

- ▶ Natural Area



MAIN STREET POND



PARK TYPE

Green Space

OVERVIEW

This pond was completed by the Garners Creek Storm Water Utility. It is located south of Emons road and just east of Main Street. An unpaved trail wraps around the pond. The size of the site is 6.89 acres.

FACILITIES AND AMENITIES

- ▶ Benches
- ▶ Natural Area/Trail
- ▶ Parking
- ▶ Picnic Tables
- ▶ Pond



COUNTRYSIDE GOLF COURSE

Countryside Golf Club is a privately owned 18-hole golf course located near the intersection of CTH CE and CTH GG in the southeastern portion of the Town. The course is open to the public and provides challenging golfing for golfers of all ages.

WISCONSIN INTERNATIONAL RACEWAY

Wisconsin International Raceway (WIR) is located on CTH KK, about one half mile east of STH 55. The speedway includes a half mile D-shaped oval track and a quarter mile paved oval track. WIR also has a quarter mile drag strip.

SCHOOLS

- ▶ Holy Spirit Parish
- ▶ Riverside Christian Fellowship
- ▶ Evangelical Ministries, Inc.

NEIGHBORING FACILITIES

Due to the interlocking boundary between the Town of Buchanan and several other jurisdictions, many residents of the Town find it convenient to utilize parks or facilities in neighboring communities. The Darboy Community Park, Kimberly YMCA, High School athletic fields, and Thousand Islands Conservancy are popular destinations.

TABLE 2-2. TOWN OF BUCHANAN PARK MATRIX

	Baseball/Softball	Basketball	Benches	Canoe/Kayak Launch	Fitness Zones/Exercise Stations	Fishing	Ice Rink	Natural Area/Trail	Open Playfield	Parking	Pickleball	Picnic Tables	Playground	Pond	Permanent Restrooms	Portable Restrooms	Shelter	Signage	Soccer	Tennis	Volleyball
Neighborhood Parks																					
Hickory Park <i>5.02 acres</i>		X	X					X	X	X		X	X			X	X	X	X	X	
Springfield Park <i>2.0 acres</i>		X	X						X	X	X	X	X			X		X		X	
Town Hall Park <i>3.13 acres</i>		X	X						X	X		X	X		X					X	
Green Spaces																					
Historic Bridge Area <i>0.41 acres</i>								X													
Main Street Pond <i>6.89 acres</i>			X					X		X		X		X							

EXISTING BICYCLE AND PEDESTRIAN FACILITIES

TRAILS, SIDEWALK, AND BIKE LANES

The CE Trail is partially located in the Town of Buchanan. The asphalt trail generally runs parallel to CTH CE, stretching from Appleton to Kaukauna. The trail is part of the Outagamie County Parks System and totals approximately 5.8 miles. There is a pedestrian underpass located off of Buchanan Road, creating a safe crossing under CTH CE.

Bike lanes and sidewalk were recently constructed along Creekview Lane and Emons Road. The facilities along Emons Road create a safe connection to the Main Street Pond Trail and the CE Trail off CTH N. Wide paved shoulders are found along CTH ZZ, extending from Kaukauna to Wrightstown. All bicycle and pedestrian facilities in the Town are displayed in Map 2-1.

REGIONAL TRAILS

There are several significant trail systems located outside the Town of Buchanan boundary.

- ▶ Loop the Locks
- ▶ Kankapot Creek Trail
- ▶ Memorial Park Trails
- ▶ Newberry Trail
- ▶ Noe Road Trail
- ▶ Fox River Trail
- ▶ Friendship Trail
- ▶ Future High Cliff Connection
- ▶ Thousand Island Trails



BICYCLE AND PEDESTRIAN FACILITY DEFINITIONS

BIKE LANE

A bike lane is a portion of the roadway which has been designated by striping, signing and pavement marking for the preferential or exclusive use by bicyclists.

SIDEWALKS

Sidewalks are a space for pedestrian travel within the public right-of-way that is separated from roadway vehicles. The terrace provides a buffer zone between users and vehicles.

SHARED USE PATH

A shared use path is an off-road facility that is strictly designed for both bicyclists and pedestrians. Typically, widths of these facilities range from 10-14 feet.

CROSSWALK

Pedestrian roadway facilities should clearly indicate to pedestrians where and when they should cross the street. It is equally important crosswalks are clearly visible to motorists entering a pedestrian area.

CURB RAMP CUT

Curb ramps cut through a curb (or are built up to it) to provide an accessible route that people can use to enter a crosswalk, cross the street, or access a bus stop (where walkways meet at a curb).

LANDSCAPING AND STREET FURNITURE

Landscaping along the street provides separation between motorists and pedestrians, reduces the visual width of the roadways, and beautifies.

LIGHTING

Pedestrian lighting increases drivers' visibility of pedestrians, promotes perceived personal security, illuminates potential hazards, and creates vibrant and inviting streetscapes.

PEDESTRIAN REFUGE ISLAND

Pedestrian refuge islands are spaces that provide a waiting area for those unable to completely cross the street during a signal crossing phase.

PEDESTRIAN COUNTDOWN TIMERS

Pedestrian countdown timers improve safety by providing information to assist pedestrians with crossing decisions, sometimes with pushbuttons.

RAPID FLASHING BEACON

The Rapid Flashing Beacon is a device used in combination with pedestrian warning signs to provide a high-visibility strobe-like warning to drivers when pedestrians use a crosswalk.

SIGNED SHARED ROADWAYS

Signed shared roadway (bike route) is simply a street/road that has been identified as a preferred bicycle route.

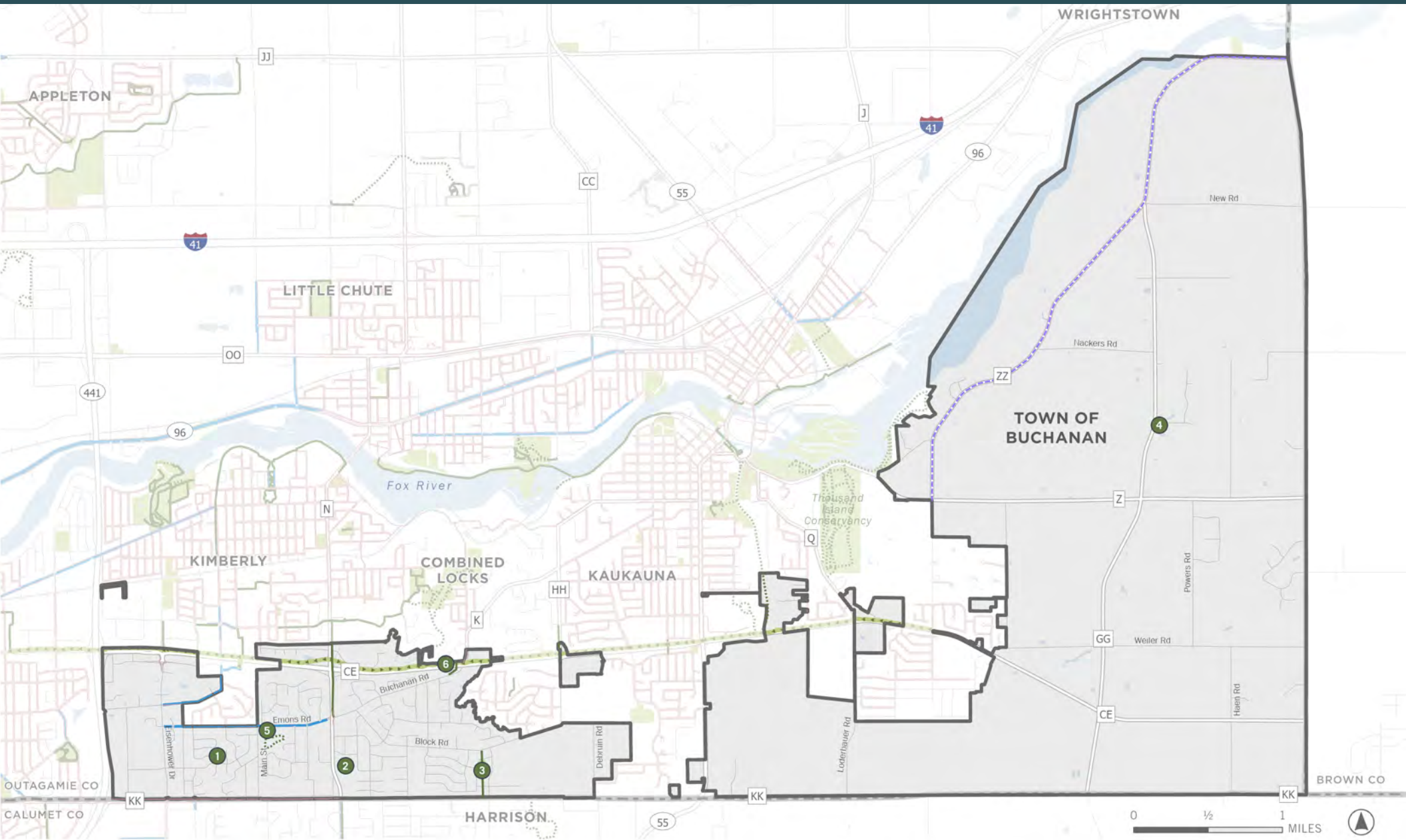
PAVED SHOULDERS

A paved shoulder accommodates bicyclists alongside travel lanes. Width varies according to the adjacent travel lane and whether or not a rumble strip is present.

SHARED LANE MARKINGS

An alternative to the bike lane designation is the sharrow, or lane designation that informs bicyclists and motorists to share the road.

MAP 2-1. BICYCLE AND PEDESTRIAN FACILITIES



- 1 Springfield Park
- 2 Town Hall Park
- 3 Hickory Park

- 4 Historic Bridge Area
- 5 Main St Pond Trail
- 6 CE Trail Underpass (Buchanan)

- CE Trail
- Park

- Wide Paved Shoulder
- Bike Lane

- Paved Trail
- Unpaved Trail
- Sidewalk

EXISTING NATURAL RESOURCES

WOODLANDS

In the Town of Buchanan, the native vegetation was composed primarily of deciduous forest (sugar maple, basswood, elm, yellow birch). During the last half of the nineteenth century much pre-settlement forestland was cut and cleared for agriculture. Presently, woodland areas in the Town of Buchanan are scattered throughout the community. Some of the most densely wooded areas are found along established drainage ways in the Town such as Garners Creek, Kankapot Creek and the Fox River. Areas along the Fox River are heavily wooded due to steep banks which limit development. It is encouraged that these banks remain wooded to prevent erosion and protect water quality. Map 2-2 highlights the natural resources in the Town of Buchanan.

SOILS

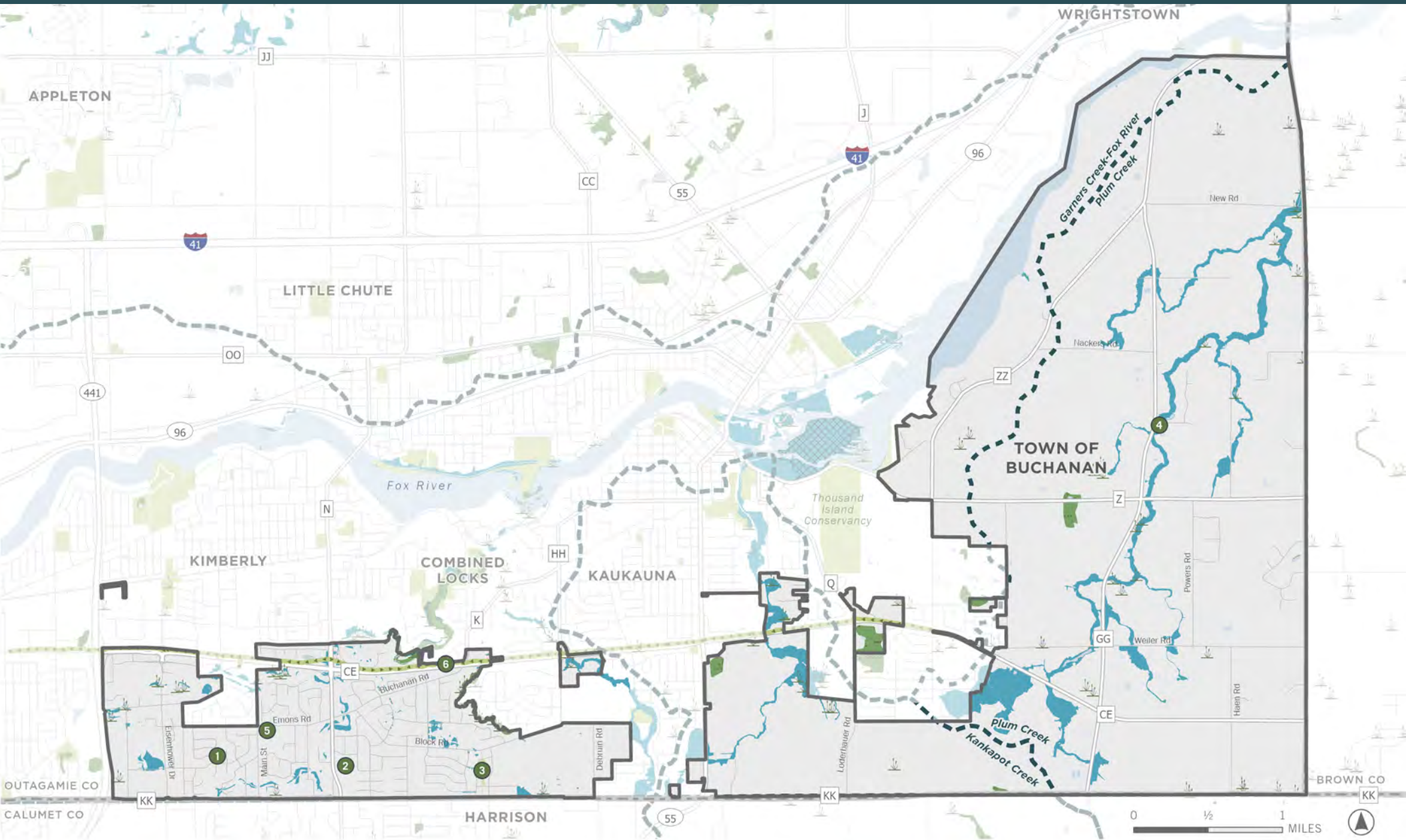
The Town of Buchanan is part of the Eastern Ridges and Lowlands geographic province of Wisconsin. Topography in the Town is characterized by flat to gently rolling, interrupted only by the ravines cut out by Garners Creek, Kankapot Creek, Plum Creek, and other streams and tributaries.

WETLANDS AND FLOODPLAINS

Wetlands act as a natural filtering system for sediment and nutrients such as phosphorus and nitrates. They also serve as a natural buffer, protecting shorelines and stream banks from erosion. There are 58 acres of wetlands larger than 5 acres in the Town and 857 acres of floodplains.



MAP 2-2. NATURAL RESOURCES



- 1 Springfield Park
- 2 Town Hall Park
- 3 Hickory Park

- 4 Historic Bridge Area
- 5 Main St Pond Trail
- 6 CE Trail Underpass (Buchanan)

- CE Trail
- Park

- Wetlands (<5 Acres)
- Wetlands (>5 Acres)

- Subwatershed Boundary
- 100 Year Floodplain
- Floodplain and Wetlands

CHAPTER TWO ENDNOTES

¹ Mertes, James and Hall, James. *Park, Recreation, Open Space and Greenway Guidelines*. National Recreation and Park Association. 1996. https://books.google.com/books/about/Park_Recreation_Open_Space_and_Greenway.html?id=U3FRAAAAMAAJ

² Barth, David. *A New Approach to Parks and Recreation System Planning*. National Recreation and Park Association. 2020. <https://www.nrpa.org/parks-recreation-magazine/2020/november/a-new-approach-to-parks-and-recreation-system-planning/>





3

RECREATIONAL NEEDS

RECREATIONAL NEEDS

ASSESSING NEED

The Town of Buchanan has undergone significant growth and demographic shifts over the past decades, with its population increasing by over 20% from 2000 to 2020 and projected to grow by 48.5% by 2040. This population boom, coupled with a rising median age, necessitates a comprehensive recreational needs assessment to meet the evolving needs of its residents.

A variety of data is analyzed in this chapter to identify key recreational needs for the Town of Buchanan. Figure 3-1 identifies the six components of the recreational needs assessment. These components include a population assessment, facilities assessment, systems assessment, accessibility assessment, health assessment, and community voice overview.

FIGURE 3-1. RECREATIONAL NEEDS ASSESSMENT COMPONENTS



POPULATION ASSESSMENT

HISTORIC AND PROJECTED POPULATION

Per the ACS 2022 5-Year Estimates, the current population of the Town of Buchanan is 6,833 people. From 2000 to 2020, the Town experienced significant growth, as the population increased just over 20% according to U.S. Census data. Department of Administration (DOA) population projections predict this trend will continue through 2040 with a 48.5% increase in population. It is important to note the DOA projections do not take the 2020 U.S. Census results into consideration, and all DOA projections were published in 2013. While the DOA projections show overarching trends, the exact population is difficult to predict. While it is likely the Town of Buchanan will continue to develop, the DOA projections may be higher than what is actually experienced. Table 3-1 and Figure 3-2 show population trends for the Town of Buchanan and comparable communities.

AGE TRENDS

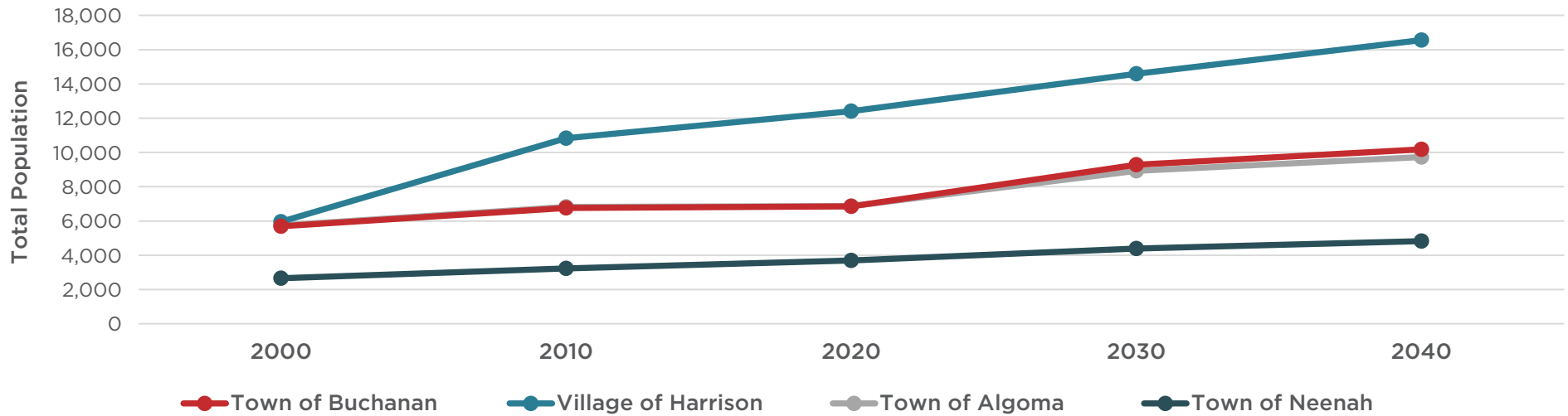
The Town of Buchanan's median age has fluctuated more than its peers in the region, the data demonstrating an overall trend in an aging population. The median age between 2010 and 2022 increased by 40.8%. This increase is more distinct than Outagamie County and the State of Wisconsin which, while also aging, have experienced only slight median age increases in the same time period. Of the communities analyzed in Figure 3-3, only the Town of Algoma has a more aged population than the Town of Buchanan. Buchanan's median age is above both Outagamie County and the State of Wisconsin, which have a median age of 38.9 and 40.4 respectively. Additionally, per the ACS 2022 5-Year Estimates, 33% of the Town's population is less than 20 years old. Recreational facilities should accommodate the needs of both children and older adults.

TABLE 3-1. POPULATION TRENDS AND PROJECTIONS (2000-2040)

		Town of Buchanan		Village of Harrison		Town of Algoma		Town of Neenah		Outagamie County		State of Wisconsin	
Year	Source	Total Pop.	% Change	Total Pop.	% Change	Total Pop.	% Change	Total Pop.	% Change	Total Pop.	% Change	Total Pop.	% Change
2000	Census	5,689	-	5,957	-	5,733	-	2,667	-	160,971	-	5,363,715	-
2010	Census	6,755	18.74%	10,839	81.95%	6,822	19.00%	3,237	21.37%	176,695	9.77%	5,686,986	6.03%
2020	Census	6,857	1.51%	12,418	14.57%	6,866	0.64%	3,702	14.37%	197,333	11.68%	6,005,080	5.59%
2030	DOA	9,280	35.34%	14,600	17.57%	8,925	29.99%	4,400	18.85%	208,730	5.78%	6,375,910	6.18%
2040	DOA	10,180	9.70%	16,550	13.36%	9,730	9.02%	4,820	9.55%	215,290	3.14%	6,491,635	1.82%

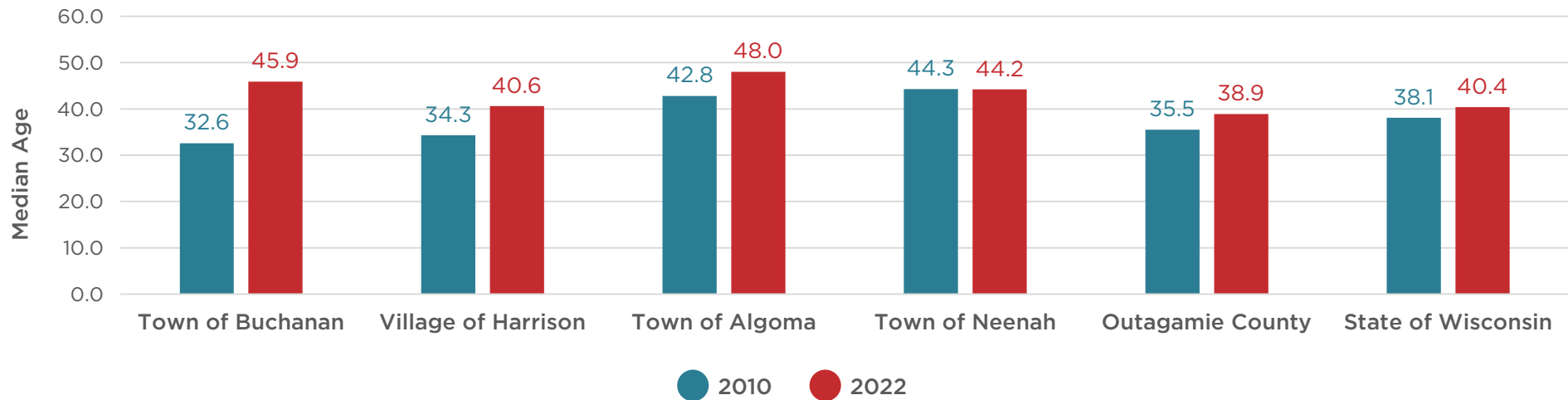
Source: 2000 U.S. Census, 2010 U.S. Census, 2020 U.S. Census, and DOA State Population Projections Vintage 2013.

FIGURE 3-2. POPULATION TRENDS AND PROJECTIONS (2000-2040)



Source: 2000 U.S. Census, 2010 U.S. Census, 2020 U.S. Census, and DOA State Population Projections Vintage 2013.

FIGURE 3-3. MEDIAN AGE TRENDS (2010, 2022)



Source: ACS 2010 5-Year Estimates and ACS 2022 5-Year Estimates.

FACILITIES ASSESSMENT

Outdoor park and recreation facilities provide a safe and inclusive environment where community members can gather, socialize, and engage in physical activity. People use parks for both active and passive forms of recreation, as well as for structured and unstructured activities. To accommodate the diverse needs, interests, and lifestyles of Town of Buchanan residents, the Town should provide a broad array of park and recreation facilities. It is important to periodically assess facility demand as the community continues to evolve. In addition to the facilities listed below, the Town provides passive amenities such as benches and shelters.

The 2024 NRPA Agency Performance Review serves as the standard for evaluating the Town of Buchanan with comparable communities.¹ It offers an extensive collection of data on park and recreation agencies across the United States. Table 3-2 analyzes the prevalence of key park facilities in the Town of Buchanan compared to communities with a similar population. However, the need for additional facilities in the Town of Buchanan depends largely on local demand. Chapter 4: Community Voice includes detailed survey data on preferred park facilities in the Town.

TABLE 3-2. TOWN OF BUCHANAN PARK FACILITIES BY PREVALENCE AND POPULATION PER FACILITY

Facility Type	Total Number of Facilities	Number of Residents per Facility	
		Town of Buchanan: 6,833 residents (2022)	NRPA Community: Less than 20,000 residents
Basketball Courts	3	2,277	4,366
Diamond Fields	-	-	1,833
Dog Parks	-	-	10,327
Fitness Zones/Exercise Stations	-	-	8,233
18-Hole Golf Courses	1	6,833	9,626
Ice Rinks	-	-	8,015
Pickleball Courts	2	3,416	3,390
Playgrounds or Play Structures	3	2,277	1,990
Rectangular Fields	1	6,833	2,493
Tennis Courts	4	1,708	4,634
Volleyball Courts	-	-	9,250

Source: ACS 2022 5-Year Estimates and 2024 NRPA Agency Performance Review.

TABLE 3-3. ESTIMATED CHANGE IN STATEWIDE PARTICIPATION IN NATURE-BASED ACTIVITIES (2020-2040)

It is important to understand statewide recreational trends to effectively plan for recreational facilities at a local scale. Table 3-3 is published in the 2019-2023 Wisconsin Statewide Comprehensive Outdoor Recreation Plan.²

This table shows the estimated change in the number of people that would be participating in the top 25 nature-based recreational activities if the rate of participation in 2020 and 2040 are the same as today.

Ranked by number of additional participants from 2020 to 2040		Ranked by percent change in additional participants from 2020 to 2040	
Activity	# of Additional Participants	Activity	Percent Growth
Birding/wildlife watching at home	242,000	Birding/wildlife watching at home	8.60%
Picnicking/tailgating/cookout	231,000	Birding/wildlife watching away from home	7.70%
Visiting a nature center	209,000	Visiting a nature center	7.30%
Hiking/walking/running on trails	172,000	Nature photography	7.00%
Visiting a beach/beach walking	166,000	Gathering berries, mushrooms, etc.	6.90%
Birding/wildlife watching away from home	152,000	Picnicking/tailgating/cookout	6.30%
Nature photography	127,000	Visiting a beach/beach walking	5.30%
Fishing - any	124,000	Hiking/walking/running on trails	5.30%
Swimming in lakes/rivers/ponds	115,000	Motor boating	5.30%
Motor boating	113,000	Fishing - any	5.20%
Gathering berries, mushrooms, etc.	104,000	Hunting - any	5.20%
Bicycling on roads	92,000	Driving 4-WD vehicles on trails or routes	4.90%
Hunting - any	68,000	Target shooting	4.60%
Target shooting	64,000	Cross-country skiing	4.60%
Walking/running dogs on trails	55,000	Sailing	4.50%
Biking on rail-trails/developed trails	51,000	Swimming in lakes/rivers/ponds	4.50%
Canoeing/kayaking	51,000	Ice skating outdoors	4.20%
Ice fishing	40,000	Bicycling on roads	4.10%
RV camping	38,000	RV camping	3.90%
Waterskiing/tubing/wakeboarding	33,000	Ice fishing	3.70%
Target archery	31,000	Walking/running dogs on trails	3.60%
Tent camping	31,000	Riding ATV/UTVs on trails or routes	3.50%
Cross-country skiing	28,000	Target archery	3.40%
Ice skating outdoors	27,000	Waterskiing/tubing/wakeboarding	3.30%
Riding ATV/UTVs on trails or routes	26,000	Canoeing/kayaking	3.20%

Source: 2019-2023 Wisconsin Statewide Comprehensive Outdoor Recreation Plan (SCORP).

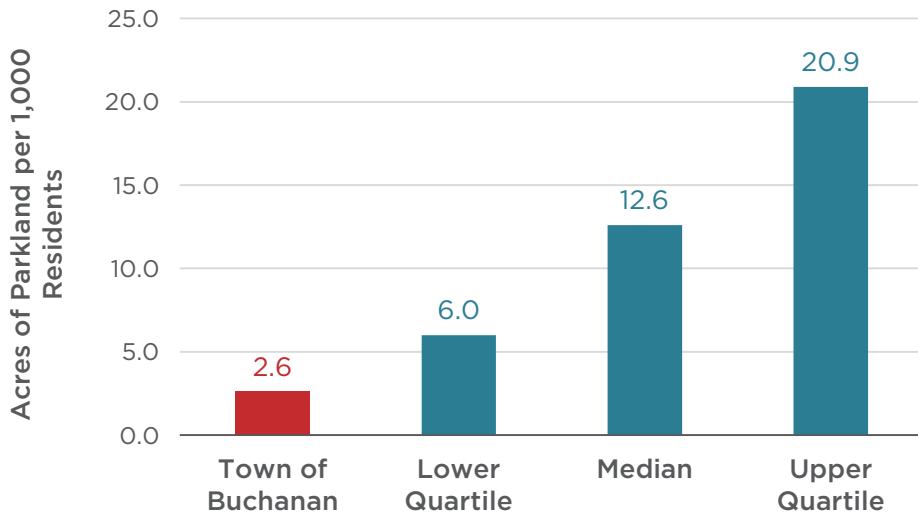
SYSTEMS ASSESSMENT

PARK SERVICE AREAS

Located within the Town of Buchanan boundary are three neighborhood parks and two green spaces, serving 6,833 total residents. The three neighborhood parks serve Buchanan’s urbanized west side, while the east side is unserved by a developed park.

As shown in Map 3-1, the neighborhood parks largely serve the residential areas to the west. All playgrounds and sports facilities are located in the neighborhood parks, so it is important these parks serve as many people as possible. This area, though, largely lacks accommodations for people to safely access the parks via bicycling, walking, or rolling. Unserved areas include the Buchanan Road corridor, Creekview Lane corridor, and the majority of rural residential developments.

FIGURE 3-4. ACRES OF PARKLAND PER 1,000 RESIDENTS (COMMUNITIES <20,000 RESIDENTS)



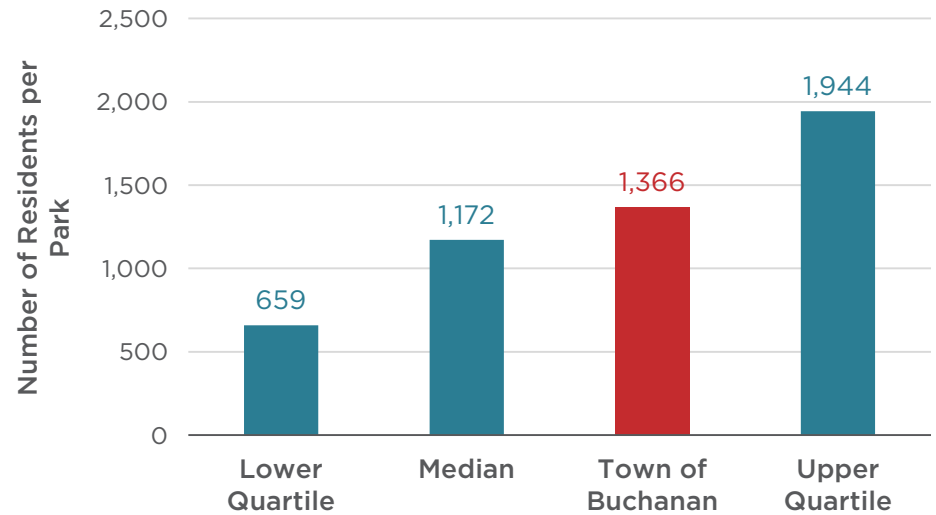
Source: ACS 2022 5-Year Estimates and 2024 NRPA Agency Performance Review.

PARKLAND DEMAND

The Town of Buchanan maintains 17.45 total acres of parkland and green space, equating to 2.55 acres for every thousand residents. According to the 2024 NRPA Agency Performance Review, this number falls below the lower quartile when compared to communities of similar size in the U.S. (Figure 3-4). However, there are 1,366 residents per park in the Town of Buchanan. As shown in Figure 3-5, the Town is positioned higher than the median number of residents per park for comparable communities.

The average area of the Town’s five parks and green spaces is modest at 3.49 acres. Due to the limited available acreage of parkland, it is imperative the Town utilizes the land efficiently. Existing parks may experience strain as the community’s population continues to increase.

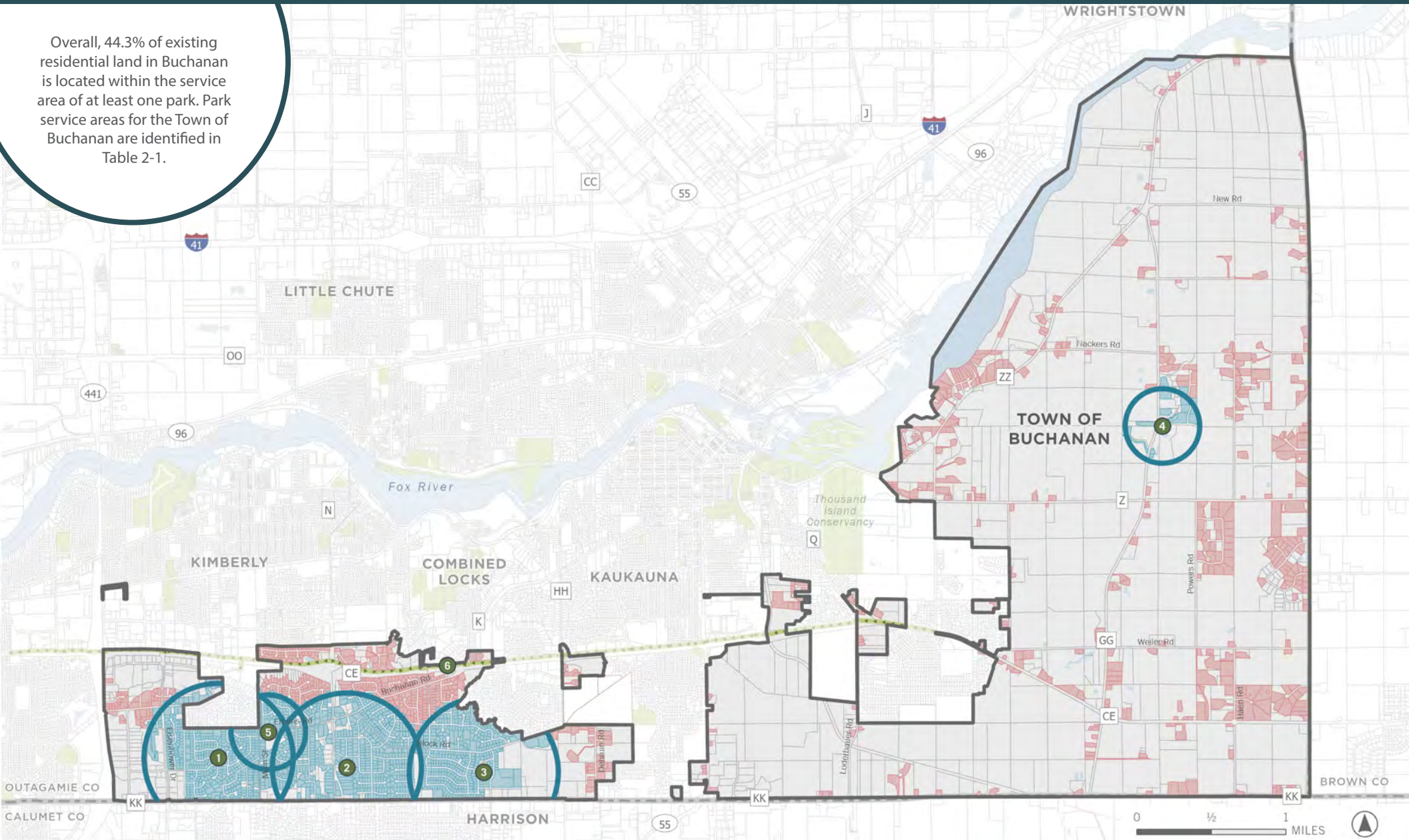
FIGURE 3-5. NUMBER OF RESIDENTS PER PARK (COMMUNITIES <20,000 RESIDENTS)



Source: ACS 2022 5-Year Estimates and 2024 NRPA Agency Performance Review.

MAP 3-1. RESIDENTIAL AREAS SERVED BY A PARK

Overall, 44.3% of existing residential land in Buchanan is located within the service area of at least one park. Park service areas for the Town of Buchanan are identified in Table 2-1.



- 1** Springfield Park
- 4** Historic Bridge Area
- CE Trail
- Residential areas served by a park
- 2** Town Hall Park
- 5** Main St Pond Trail
- Park
- Residential areas unserved by a park
- 3** Hickory Park
- 6** CE Trail Underpass (Buchanan)
- Park Service Area Buffer



WHO IS UNSERVED BY A PARK IN THE TOWN OF BUCHANAN?

FIGURE 3-6. DEMOGRAPHICS OF RESIDENTS IN AND OUT OF PARK SERVICE AREAS

TOTAL POPULATION



TOTAL HOUSEHOLDS



POPULATION UNDER 18 YEARS OLD



POPULATION OVER 64 YEARS OLD



HOUSEHOLDS WITH 1+ PERSONS WITH A DISABILITY



HOUSEHOLDS BELOW POVERTY LEVEL



Source: ESRI Business Analyst 2024, derived from ACS 2022 5-Year Estimates.

ACCESSIBILITY ASSESSMENT

ADA ACCESSIBILITY

From barrier removal to the development of new facilities, the inclusion of people with disabilities is vital in park and recreation planning. In 2010, the Americans with Disabilities Act (ADA) revised regulations to specifically address areas that affect parks and recreation. The concept of renovating public parks and green spaces to make them more accessible and inclusive has grown increasingly popular. The Town of Buchanan recently rebuilt the Springfield Park playground with ADA accessible features.

SAFE ROUTES TO PARKS

Creating safe walking and biking connections to parks is crucial for ensuring universal access to park facilities. When communities have roadways with an interconnected network of safe and comfortable places for walking and bicycling, more people choose these forms of transportation to travel around the community. The bicycle and pedestrian facilities on Emons Road and the CE Trail help form safe routes to parks in the Town of Buchanan.

INCLUSIVE PLAYGROUNDS

Inclusive playgrounds are accessible to children and caregivers of all abilities, allow all children to learn through play and better social-emotional skills, and boost children's confidence by allowing them to try new things and build new skill sets.³ Listed below are common inclusive features found on playgrounds.

- ▶ Communication boards
- ▶ Accessible surfacing
- ▶ Ramps
- ▶ Accessible paths to, and around, the playground
- ▶ Ample shade and seating
- ▶ Fences or natural barriers
- ▶ Imaginative play opportunities and themes
- ▶ Wheelchair accessible swings; Saucer swings; "Adaptive" or "inclusive" swings
- ▶ "Quiet" or "calm down" spaces
- ▶ Spinny egg-shaped chairs
- ▶ Accessible merry-go-rounds/"spinners"
- ▶ Tactile/musical elements
- ▶ Inclusive gliders/rockers
- ▶ Slides with easy transfer mechanisms

HEALTH ASSESSMENT

PARKS AND HEALTH

People’s health is often related to and influenced by their participation in outdoor recreation. According to the Trust for Public Land, there are eight ways parks can improve overall health.⁴

1. Parks increase exercise. People who live near and regularly use parks are shown to exercise more than people who don’t.
2. Most moderate exercise takes place in parks, about 12%. Parks are where people get the type of exercise their bodies need most.
3. Parks reduce stress and clear the mind. Outdoor areas boost focus and promote relaxation.
4. A park makeover with aesthetically pleasing spaces encourages use and promotes public health habits.
5. A variety of amenities can attract different users (i.e. skateparks, baseball diamonds, or trails) and encourage fun, physical activities.
6. Dedicated fitness zone areas encourage exercise and increase park use. Body fitness stations encourage adults to workout.
7. Supervised activities and programming maximize a park’s public health benefit.
8. Exercise is one of the cheapest ways to stay healthy. By promoting healthy habits, parks can help reduce health care costs.

COUNTY HEALTH RANKINGS

Table 3-4 highlights key metrics from the 2024 Outagamie County Health Rankings and Roadmaps. The measures in the County Health Rankings and Roadmaps are based on a model of population health that emphasizes social, economic, physical, and clinical factors.

TABLE 3-4. OUTAGAMIE COUNTY KEY HEALTH METRICS (2024)

Health Metric	Poor or Fair Health	Percentage of adults reporting fair or poor health (age-adjusted)	Outagamie Co.	12%
			Wisconsin	13%
	Poor Physical Health Days in Past 30 Days	Average number of physically unhealthy days reported in past 30 days (age-adjusted)	Outagamie Co.	3.1
			Wisconsin	3.3
	Poor Mental Health Days in Past 30 Days	Average number of mentally unhealthy days reported in past 30 days (age-adjusted)	Outagamie Co.	4.6
			Wisconsin	4.8
	Adult Obesity	Percentage of adults that report a BMI of 30 or more	Outagamie Co.	32%
			Wisconsin	34%
	Physical Inactivity	Percentage of adults age 20 and over reporting no leisure-time physical activity	Outagamie Co.	19%
			Wisconsin	19%
	Access to Exercise Opportunities	Percentage of population with adequate access to locations for physical activity	Outagamie Co.	88%
			Wisconsin	84%

Source: 2024 County Health Rankings and Roadmaps.

CHAPTER THREE ENDNOTES

¹ 2024 NRPA Agency Performance Review. National Recreation and Park Association. 2024. <https://www.nrpa.org/siteassets/research/2024-agency-performance-review.pdf>

² Wisconsin Statewide Comprehensive Outdoor Recreation Plan 2019-2023. Wisconsin Department of Natural Resources. 2019. <https://dnr.wisconsin.gov/topic/fl/PropertyPlanning/Scorp>

³ Lammert, Madison. *Inclusive playgrounds provide a safe place for children of all abilities. Here's why that's important.* Appleton Post Crescent. 2024. <https://www.postcrescent.com/story/life/family/2024/04/23/inclusive-playgrounds-are-cropping-up-what-are-they/73245636007/>

⁴ 8 Ways that Parks Improve your Health. The Trust for Public Land. 2013. <https://e7jecw7o93n.exactdn.com/wp-content/uploads/2022/10/Parks-Health-Brochure.pdf>



4

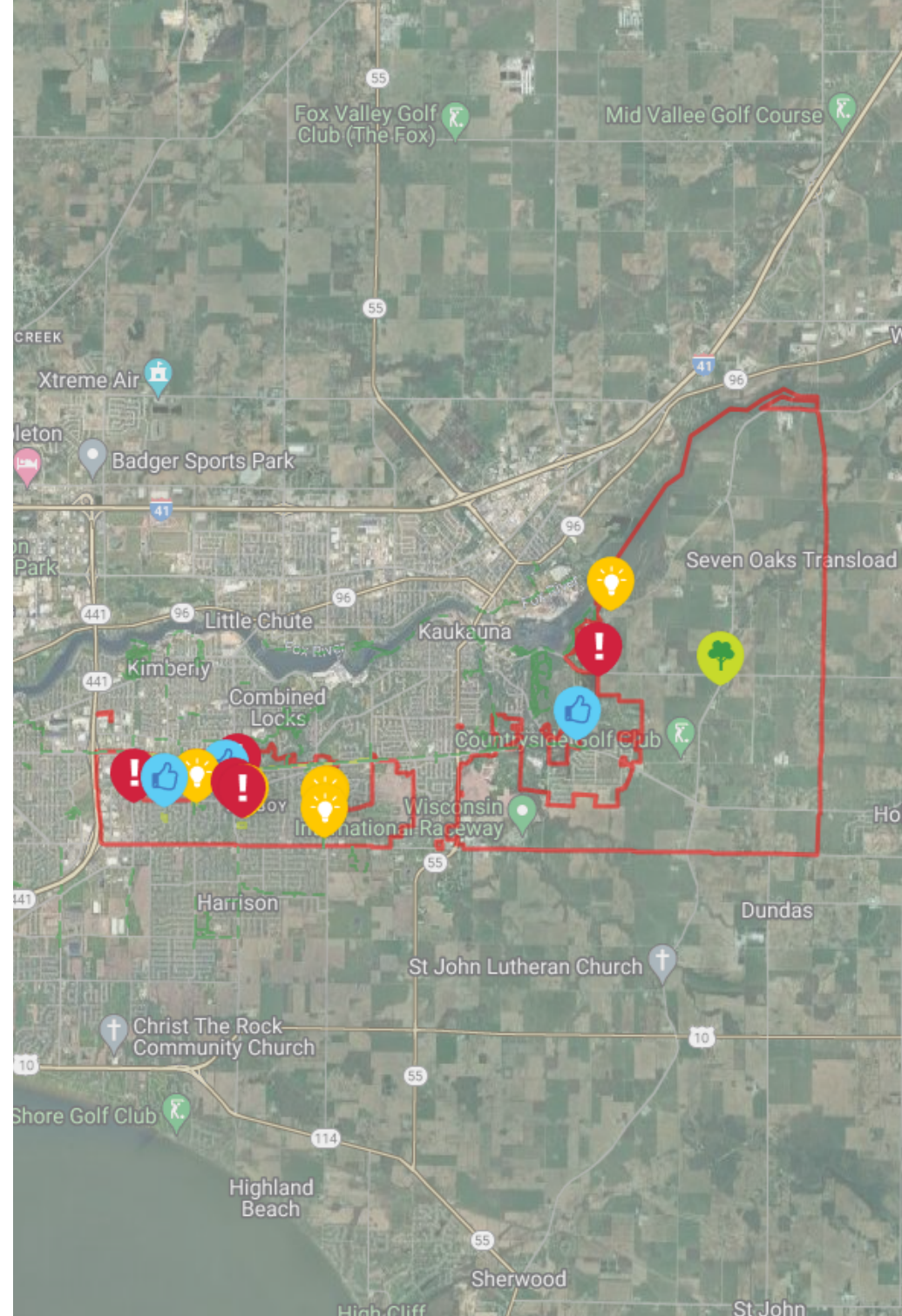
COMMUNITY VOICE

COMMUNITY VOICE

COMMUNITY ENGAGEMENT EFFORTS

Understanding the needs and preferences of the residents of the Town of Buchanan is key to creating a plan that reflects the community's best interests. By analyzing the data collected through community engagement efforts, the Town can better prioritize investments and initiatives, ensuring that Buchanan's parks and green spaces cater to both current and future needs. This chapter presents the findings of a community survey, highlights key themes from engagement efforts, and provides quotes from survey respondents.

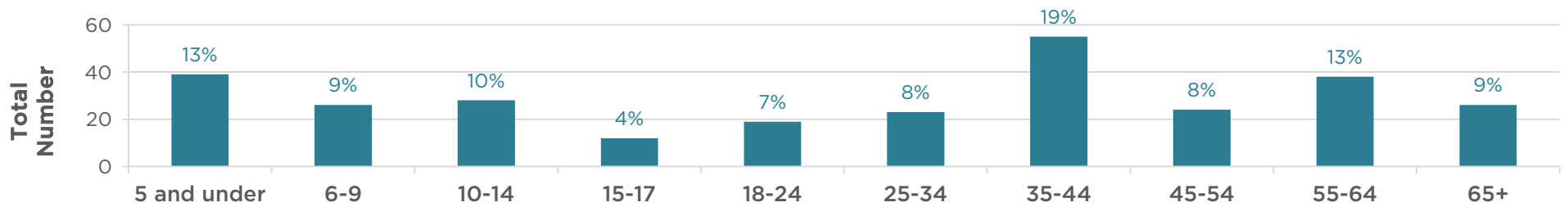
Community engagement efforts took place from April 1st, 2024 to May 31st, 2024 via a project website, survey, and interactive map. The project website was advertised on the Town of Buchanan website, in a printed newsletter that is mailed to residents, and on the Town's social media. The survey included 11 questions, exploring topics such as park facility needs, bicycle and pedestrian access, priority investments, and demographics. The interactive map provided an opportunity for users to share ideas and suggestions, areas of improvement, things they like, and new park location ideas. The survey generated 91 responses, and the interactive map generated 20 responses.



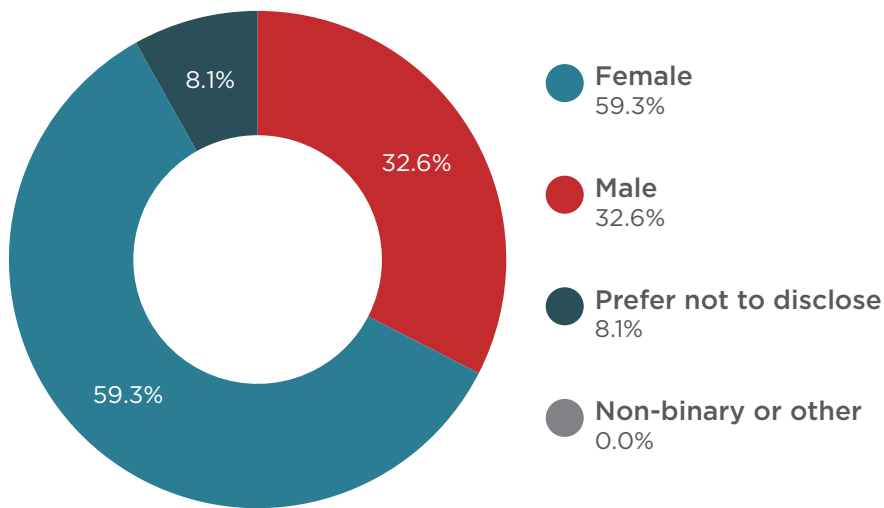
DEMOGRAPHICS

FIGURE 4-1. DEMOGRAPHICS OF SURVEY RESPONDENTS

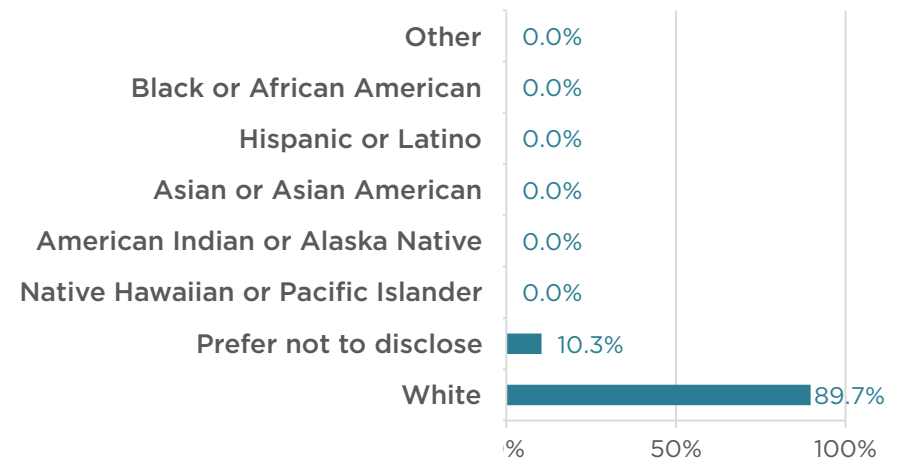
PLEASE IDENTIFY THE NUMBER OF PEOPLE IN EACH AGE GROUP LIVING IN YOUR HOUSEHOLD.



WHAT IS YOUR GENDER?

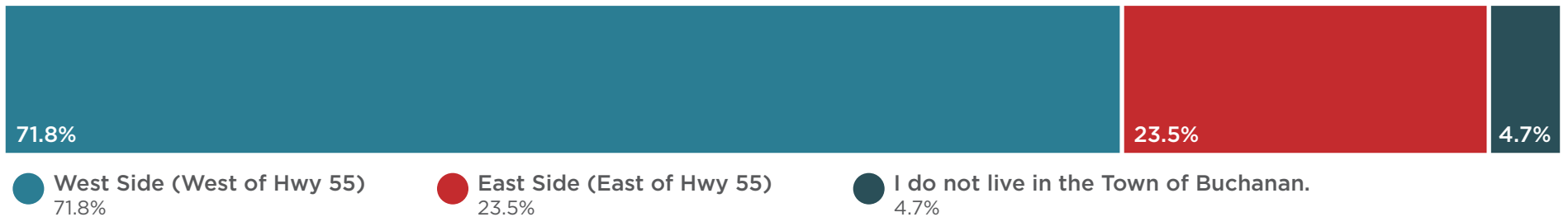


WHAT IS YOUR RACE OR ETHNIC GROUP?



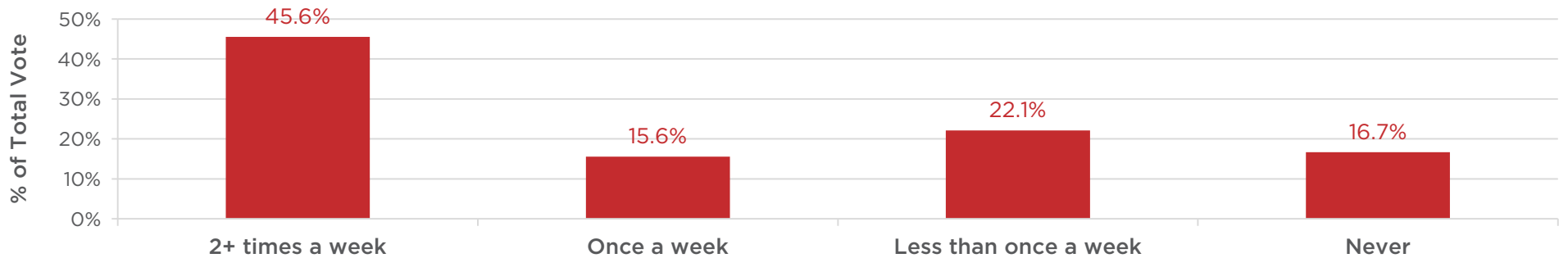
Q1: WHERE DO YOU LIVE IN THE TOWN OF BUCHANAN?

FIGURE 4-2. Q1 RESULTS



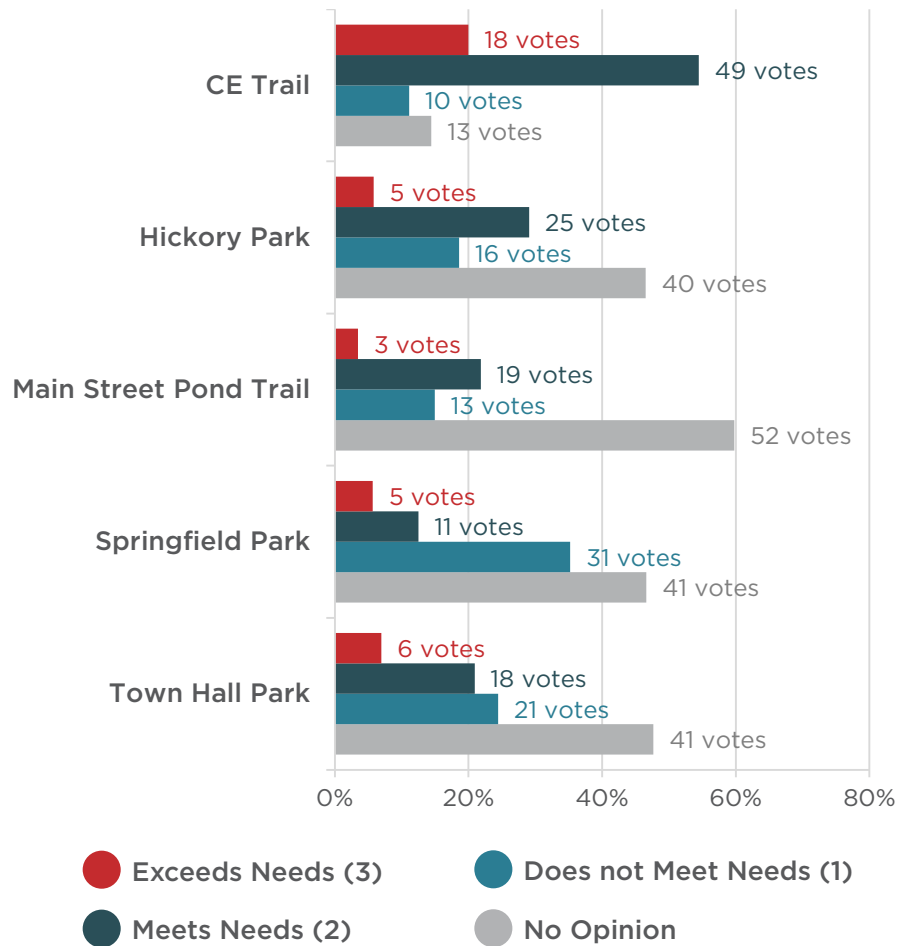
Q2: IN THE SUMMER, HOW OFTEN DO MEMBERS OF YOUR HOUSEHOLD VISIT PARKS AND/OR UTILIZE TRAILS IN THE TOWN OF BUCHANAN?

FIGURE 4-3. Q2 RESULTS



Q3: HOW SATISFIED ARE YOU WITH THE FOLLOWING PARKS AND TRAILS IN THE TOWN OF BUCHANAN? (SCALE OF 1-3)

FIGURE 4-4. Q3 RESULTS



KEY THEME: SAFE CONNECTIONS TO PARKS



"Need trails that connect people to places not just in the parks."

"Town Hall Park isn't easily, safely accessible or visible."

KEY THEME: MAINTENANCE AND UPGRADES



"All the parks need a face-lift. They have been around for a long time and need new amenities."

"Main Street pond trail is wet/muddy in spots, would be great if it was paved/asphalt"

KEY THEME: ADDITIONAL FACILITIES

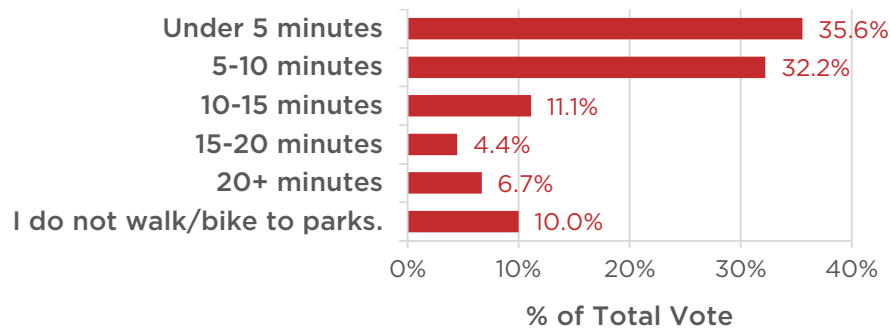


"It would be nice to have electricity at Hickory Park. If so, we would consider utilizing it for parties."

"Need swings for smaller kids/babies!"

Q4: ON AVERAGE, HOW LONG DOES IT TAKE YOU TO REACH YOUR NEIGHBORHOOD PARK VIA BIKING OR WALKING?

FIGURE 4-5. Q4 RESULTS



KEY THEME: SAFE CONNECTIONS TO PARKS

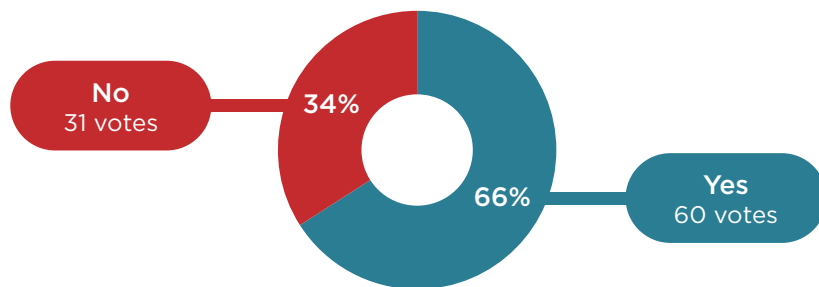


"There are barely any sidewalks on the east side of Buchanan :(I do not feel safe. Cars drive a minimum of 40 mph and its very scary. If I do walk somewhere it will be via country roads to 1000 islands in Kaukauna."

"But I have to cross county N and there are no sidewalks or crosswalks"

Q5: DO YOU FEEL SAFE WALKING AND/OR BIKING IN YOUR NEIGHBORHOOD?

FIGURE 4-6. Q5 RESULTS



KEY THEME: SAFE CONNECTIONS TO PARKS

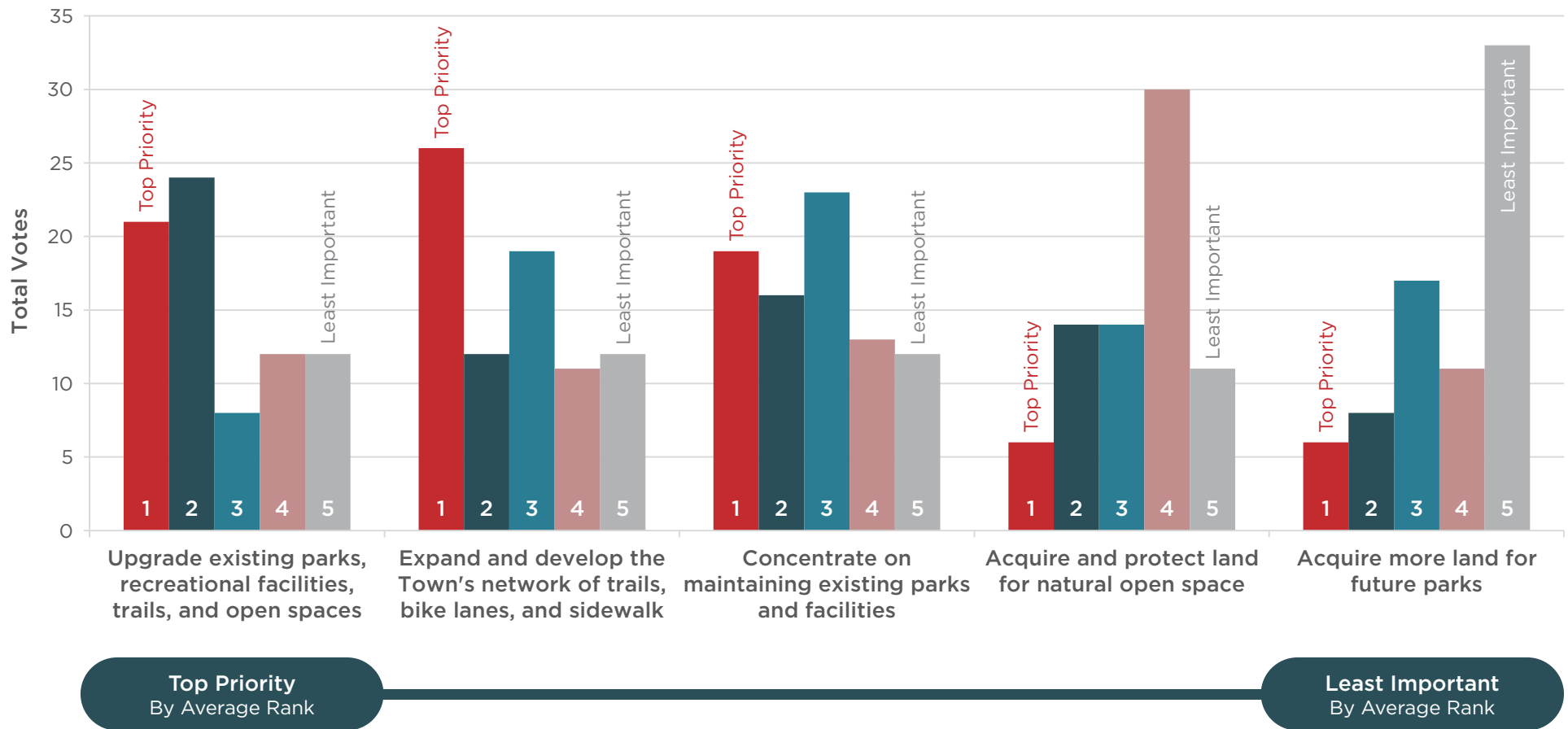


"We didnt used to feel safe, but now that there is a sidewalk on Emons, it made a huge difference in our kiddos being able to ride bikes or walk to Springfield park."

"Block and Buchanan has heavy traffic and no sidewalks"

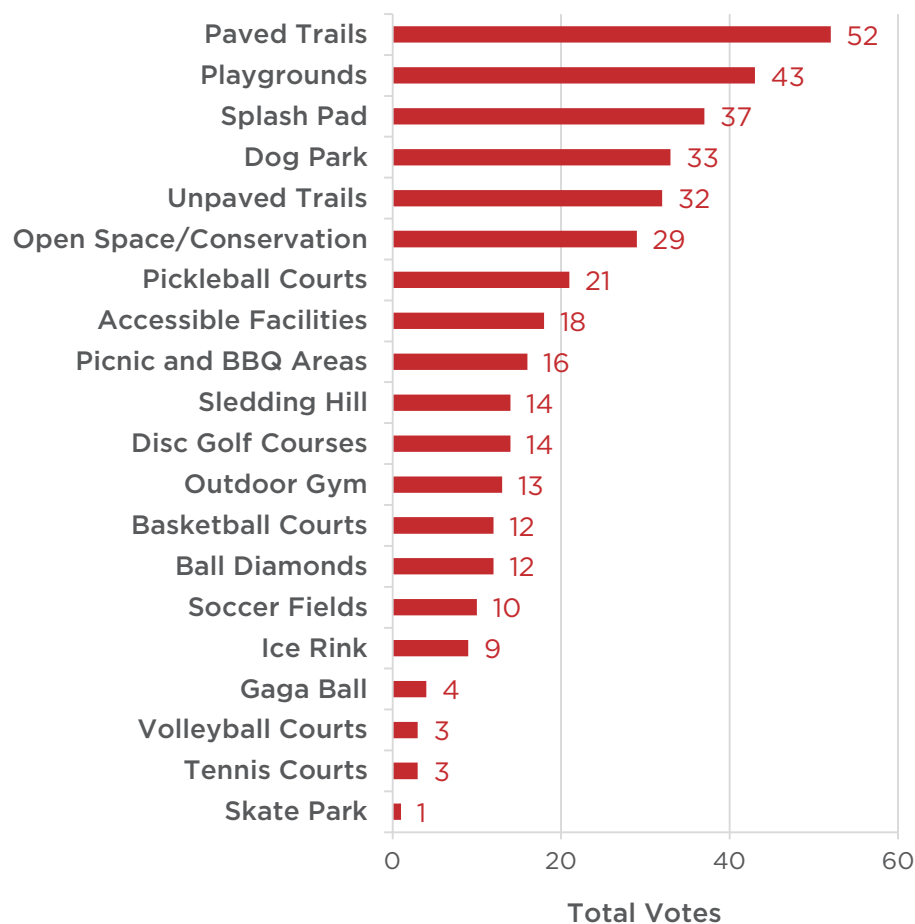
Q6: HOW CAN THE TOWN OF BUCHANAN BEST IMPROVE THE LOCAL PARK SYSTEM? PLEASE RANK THE OPTIONS BELOW IN TERMS OF PRIORITY (1-5) WHERE 1 IS THE TOP PRIORITY TO YOU AND 5 IS THE LEAST IMPORTANT TO YOU. CHOOSE EACH NUMBER ONCE.

FIGURE 4-7. Q6 RESULTS



Q7: FROM THE LIST BELOW, PLEASE PICK THE TOP FIVE (5) FACILITIES THAT YOU THINK THE TOWN SHOULD INVEST MORE IN.

FIGURE 4-8. Q7 RESULTS



KEY THEME: ADDITIONAL FACILITIES



"Community/senior center/Destination sports park with ball diamonds/multi-use fields/courts/ accessible playground/etc."

"Universal playground like Memorial Park in Appleton"

"Implementing dog waste stations/waste station with a bench amongst our township. Suggestion specifically: Main Street Pond path/side walk area on Emmons, Springfield park a dog waste station and bench closer to the road. Along the CE trail"

"My #1 choice would be to have more pickleball courts!!"

KEY THEME: MAINTENANCE AND UPGRADES

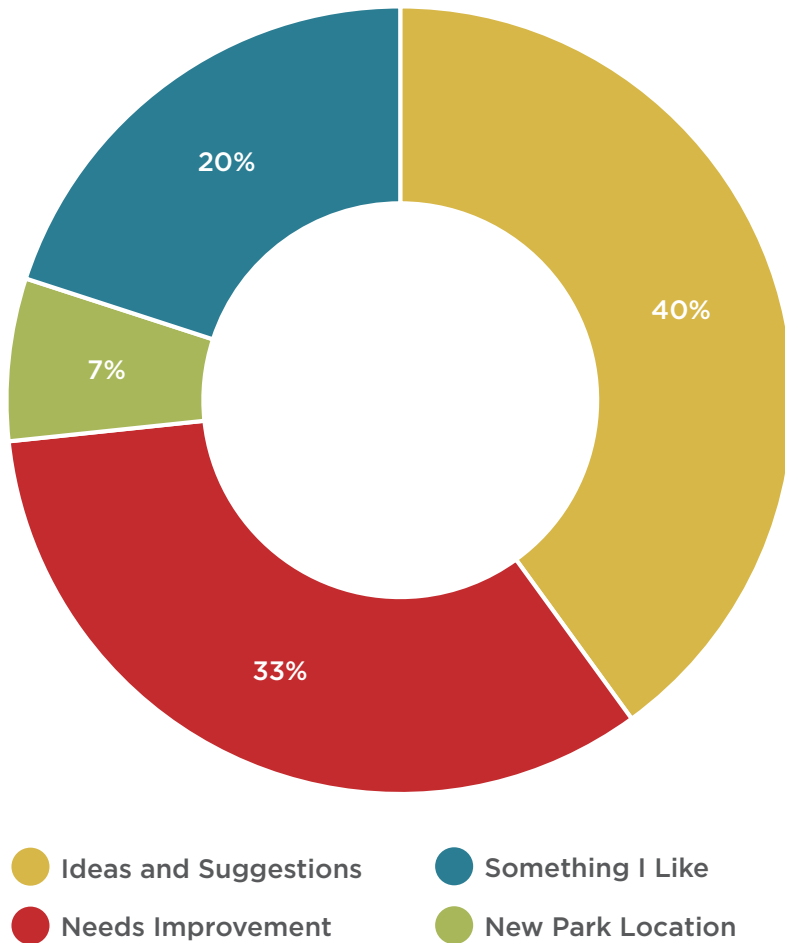


"I know everything costs money but parks are important to families and making a great community so I hope the Town is able to put some money into its parks and trails."

"I think the town should focus on maintaining [required] services, like roads, and less on optional things we can't actually afford without borrowing like new playgrounds."

"PLEASE SHARE YOUR IDEAS TO HELP SHAPE THE FUTURE OF BUCHANAN PUBLIC PARKS AND RECREATION SPACES!"

FIGURE 4-9. MAP COMMENT TYPES



KEY THEME: SAFE CONNECTIONS TO PARKS



"Bike/pedestrian path needed on Eisenhower."

"I hope the trail can be extended along Calumet."

KEY THEME: MAINTENANCE AND UPGRADES



"I saw Springfield park is getting updated this year, that is great news!"

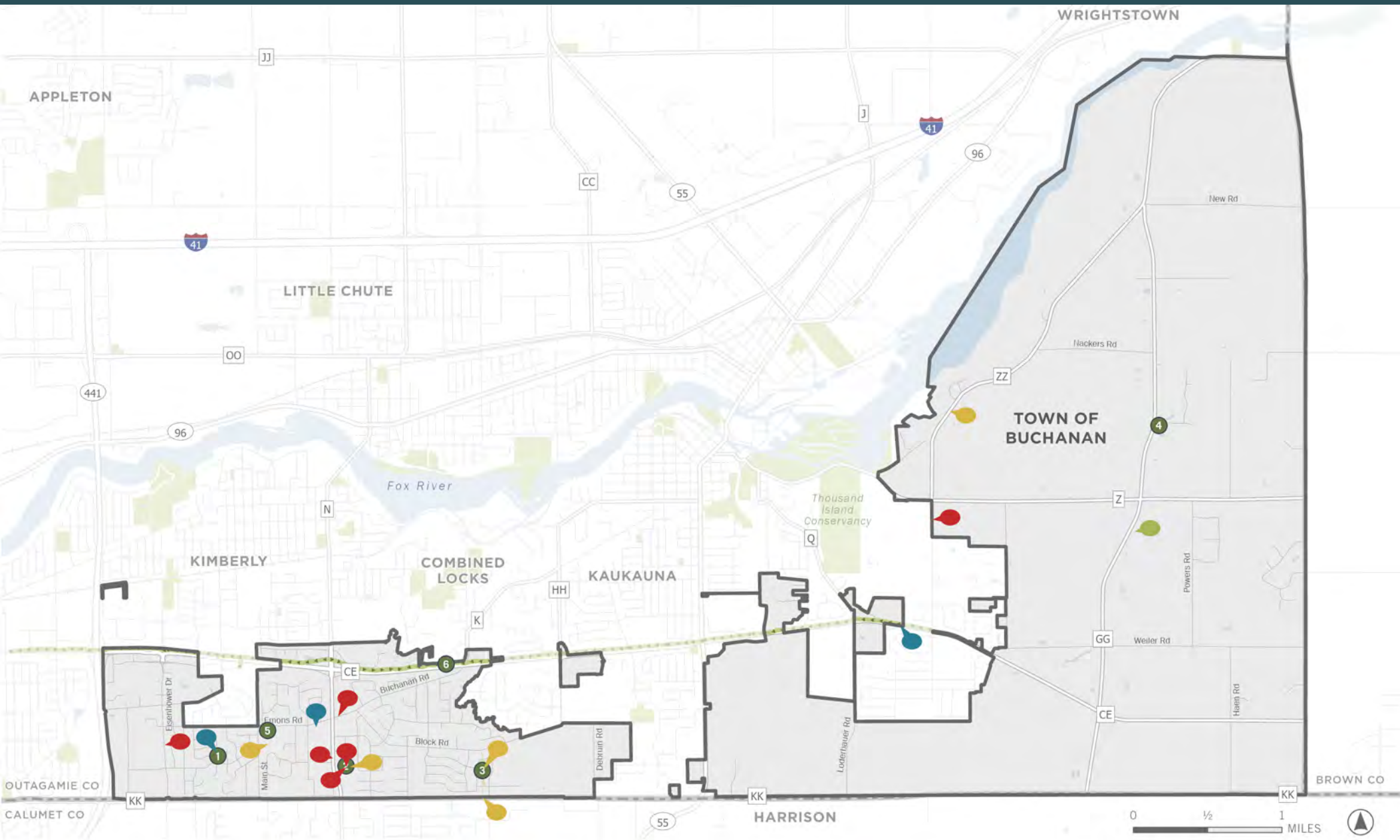
"There is a need for more soccer fields in our area, I know the local soccer club is willing to help. Could we resurface and create a second field behind the existing field?"

KEY THEME: ADDITIONAL FACILITIES



"There are a number of subdivisions on the east side of Town that don't have access to parks. It would be great to see parks built in existing or new subdivisions."

MAP 5-1. INTERACTIVE MAP RESULTS



- | | | | | |
|--------------------|---------------------------------|----------|----------------------------------|-----------------------------|
| 1 Springfield Park | 4 Historic Bridge Area | CE Trail | Yellow dot Ideas and Suggestions | Green dot New Park Location |
| 2 Town Hall Park | 5 Main St Pond Trail | Park | Red dot Needs Improvement | Blue dot Something I Like |
| 3 Hickory Park | 6 CE Trail Underpass (Buchanan) | | | |

A pair of glasses with a dark frame is hanging on a metal rack. The background is a solid teal color. The glasses are the central focus, with the text overlaid on them.

5

GOALS AND RECOMMENDATIONS

GOALS AND RECOMMENDATIONS

PLAN GOALS

The following goals and objectives were developed by the Town of Buchanan Parks Committee after reviewing the recreational needs assessment and key themes from community input outlined in Chapter 3 and Chapter 4. These goals are common ideals of the community that can be achieved through the actions of government leaders, private organizations, and individual citizens.

Objectives specify in greater detail how these desired goals can be achieved. The goals and objectives provide a basis for establishing Town policy regarding the planning, acquisition and future development of park and recreation facilities. Specific recommendations and action plans for each objective are also identified later in this chapter.





GOAL ONE

Increase the usefulness of existing park sites within the Town of Buchanan for all citizens.

OBJECTIVES

1. Make substantial improvements to Town Hall Park.
2. Make substantial improvements to Hickory Park.
3. Add a small playground in the open area on the north end of the Main Street Pond trail.
4. Develop a robust donor network to help the Town finance public projects.
5. In conjunction with local organizations, create programming at the Town's parks that will benefit our citizens.

GOAL TWO

Increase the number and quality of bicycle and pedestrian facilities throughout the Town of Buchanan.

OBJECTIVES

1. Make improvements as needed to existing trails to ensure continued usability.
2. In conjunction with the Town's Capital Improvement Plan, create a system of trails, bike lanes, and sidewalk that will allow safe and efficient access to existing local parks.
3. In conjunction with neighboring communities and the Town's Capital Improvement plan, expand on the regional bicycle and pedestrian network to increase connections to trail systems and encourage outdoor recreation.



GOAL THREE

Strategically increase the number of park sites within the Town of Buchanan as the Town continues to grow.

OBJECTIVES

1. Develop new parks in areas underserved by existing parks.

PLAN RECOMMENDATIONS

The recommendations identified in this plan seek to enhance the recreational infrastructure in a way that meets current needs while anticipating future growth and changes in the community. Accompanying the plan's goals and objectives, the following recommendations serve as a guide for the future development of parks, trails, and recreation areas in the Town of Buchanan. The plan recommendations were drafted based on the findings from the recreational needs assessment, community input, discussions with Town staff, and discussions with the Parks Committee.

Recommendations should be reviewed annually by the Town of Buchanan Parks Committee as implementation will require ongoing effort, coordination among stakeholders, and adaptability to changing circumstances. Although some of the identified recommendations may not be feasible to complete in five years, they represent a course of action that the Town should take if the opportunity arises. The recommendations are also included in the action program tables with additional funding and timeline details. The action program tables list projects that are feasible for implementation from 2024 to 2028.



INCREASE THE USEFULNESS OF EXISTING PARK SITES WITHIN THE TOWN OF BUCHANAN FOR ALL CITIZENS.

OBJECTIVE 1-1. MAKE SUBSTANTIAL IMPROVEMENTS TO TOWN HALL PARK.

Recommendations

- ▶ Develop a master plan for the park.
- ▶ Add rubberized playground surface under play facilities for ADA accessibility.
- ▶ Build a paved, ADA accessible trail through the park with connections to the future CTH N trail and Van Handel Road.
- ▶ Add clear, branded wayfinding signage for the park along CTH N with park rules and hours.
- ▶ Add lighting for security, safety, and flexibility of facility use.
- ▶ Plant native vegetation to improve aesthetics and wildlife habitat.
- ▶ Complete an annual refresh of mulch/landscaping and schedule large maintenance projects routinely in the Town's CIP.



WHAT WE KNOW

Per the community survey, 61.2% of households visit parks and/or utilize trails in the Town at least once a week in the summer. However, many survey respondents mentioned that Town Hall Park needs improvement. Excluding “no opinion” votes, 46.7% of respondents noted that Town Hall Park does not meet their needs. Many of the facilities at Town Hall Park are outdated and in need of maintenance. Therefore, the Town should pursue grant funding to make improvements to the park. The Town should capitalize on the park’s proximity to Town Hall facilities, permanent restrooms, access to electricity and plumbing, and future CTH N trail connection to create a vibrant park space.

INCREASE THE USEFULNESS OF EXISTING PARK SITES WITHIN THE TOWN OF BUCHANAN FOR ALL CITIZENS.

OBJECTIVE 1-2. MAKE SUBSTANTIAL IMPROVEMENTS TO HICKORY PARK.

Recommendations

- ▶ Develop a master plan for the park.
- ▶ Build inclusive, ADA accessible playground facilities for children of all abilities and ages.
- ▶ Build 1-2 additional smaller soccer fields to accommodate U6 and U8 youth soccer.
- ▶ Convert one tennis court to four pickleball courts.
- ▶ Update existing shelter or equip new shelter with electrical hookups and lighting to accommodate events.
- ▶ Extend paved trail along Briarwood Drive to create loop and connect parking areas.
- ▶ Extend bicycle and pedestrian access from the existing park trail to Block Road via paved trail or sidewalk.
- ▶ Update wayfinding signage for the park with park rules and hours.
- ▶ Plant additional trees and native vegetation to improve aesthetics and wildlife habitat.
- ▶ Complete an annual refresh of mulch/landscaping and schedule large maintenance projects routinely in the Town's CIP.



WHAT WE KNOW

According to the community survey, the top priority for the Town to improve the local park system should be to upgrade existing parks, recreational facilities, trails, and open spaces. The playgrounds and courts at Hickory Park were last updated in 2001 and are due for an upgrade. Excluding “no opinion” votes, 34.8% of survey respondents noted that Hickory Park does not meet their needs. Therefore, the Town should make significant improvements to the park. As the Town’s trail and sidewalk network is developed, it is important to connect the park directly to key roadways such as Block Road. Improving ADA accessibility of facilities should be prioritized, too.

INCREASE THE USEFULNESS OF EXISTING PARK SITES WITHIN THE TOWN OF BUCHANAN FOR ALL CITIZENS.

OBJECTIVE 1-3. ADD A SMALL PLAYGROUND IN THE OPEN AREA ON THE NORTH END OF THE MAIN STREET POND TRAIL.

Recommendations

- ▶ Build inclusive, ADA accessible playground facilities for children of all abilities and ages.
- ▶ Build outdoor fitness stations near the playground and along the trail for adults.
- ▶ Identify a name for the park and trail.
- ▶ Add clear, branded wayfinding signage for the park and trail along Emons Road with park rules and hours.
- ▶ Complete an annual refresh of mulch/landscaping and schedule large maintenance projects routinely in the Town's CIP.

OBJECTIVE 1-4. DEVELOP A ROBUST DONOR NETWORK TO HELP THE TOWN FINANCE PUBLIC PROJECTS.

Recommendations

- ▶ Develop list of private funding, non-profit funding, and philanthropic funding partners.
- ▶ Develop list of specific park funding opportunities (e.g. contributing to the cost of mulch or native garden plantings) for typical donors to choose to contribute to.
- ▶ Advertise donation opportunities on the Town website with the ability to donate directly online.
- ▶ Identify opportunities for funding large projects such as land donations or park naming rights.

INCREASE THE USEFULNESS OF EXISTING PARK SITES WITHIN THE TOWN OF BUCHANAN FOR ALL CITIZENS.

OBJECTIVE 1-5. IN CONJUNCTION WITH LOCAL ORGANIZATIONS, CREATE PROGRAMMING AT THE TOWN'S PARKS THAT WILL BENEFIT OUR CITIZENS.

Recommendations

- ▶ Partner with vendors and performers to capitalize on future updates to Town Hall Park to host events such as local markets, food truck rallies, Touch-a-Truck days, and live music.
- ▶ Partner with organizations and community members to beautify parks (e.g. planting flowers or painting murals) as public volunteering events.
- ▶ Partner with local schools and club sports to learn about specific facility needs (e.g. ball diamonds and soccer fields) and plan for programs/facilities accordingly.



INCREASE THE NUMBER AND QUALITY OF BICYCLE AND PEDESTRIAN FACILITIES THROUGHOUT THE TOWN OF BUCHANAN.

OBJECTIVE 2-1. MAKE IMPROVEMENTS AS NEEDED TO EXISTING TRAILS TO ENSURE CONTINUED USABILITY.

Recommendations

- ▶ Pave Main Street Pond trail to improve accessibility.
- ▶ Add dog waste bag stations and benches along future CTH N trail near Buchanan Town Hall, Emons Road near Main Street Pond trail entrance, and Buchanan Road near CE trail underpass.
- ▶ Add bicycle repair station along future CTH N trail near Buchanan Town Hall.
- ▶ Plow all bike lanes and paved trails in the winter to expand seasonal usability.



WHAT WE KNOW

According to the community survey, paved trails are the top-ranking park facility that people think the Town should invest in. Several survey respondents advocated for paving the Main Street Pond trail, specifically. The Town should pave this scenic trail to improve accessibility and prevent the trail from washing out.

Furthermore, supplementary amenities such as dog waste bag stations, bicycle repair stations, benches, and landscaping should be added along main trail corridors to improve the user experience. These corridors include the CE trail, Main Street Pond Trail, Emons Road bike lanes, and future CTH N trail.

INCREASE THE NUMBER AND QUALITY OF BICYCLE AND PEDESTRIAN FACILITIES THROUGHOUT THE TOWN OF BUCHANAN.

OBJECTIVE 2-2. IN CONJUNCTION WITH THE TOWN'S CAPITAL IMPROVEMENT PLAN, CREATE A SYSTEM OF TRAILS, BIKE LANES, AND SIDEWALK THAT WILL ALLOW SAFE AND EFFICIENT ACCESS TO EXISTING LOCAL PARKS.

Recommendations

- ▶ Build multimodal trail along Eisenhower Drive (construction planned for 2026).
- ▶ Build multimodal trail and sidewalk along CTH N (construction planned for 2026).
- ▶ Build bicycle and pedestrian facilities along CTH KK.
- ▶ Build bicycle and pedestrian facilities along Block Road.
- ▶ Build bicycle and pedestrian facilities along Buchanan Road.



WHAT WE KNOW

The majority of Town of Buchanan residents, 85.5%, live to the west of STH 55. The development pattern of the west side of Buchanan is characterized by a network of cul-de-sacs with roadways lacking bicycle and pedestrian facilities. Traffic is funneled onto Eisenhower Drive, Emons Road, CTH KK, CTH N, Block Road, and Buchanan Road. Many people struggle to access local parks safely via walking and bicycling. In fact, 34% of survey respondents indicated they do not feel safe walking and/or biking in their neighborhood. The Town should prioritize securing funding to build bicycle and pedestrian facilities on roadways with high traffic volumes to increase access to parks.

INCREASE THE NUMBER AND QUALITY OF BICYCLE AND PEDESTRIAN FACILITIES THROUGHOUT THE TOWN OF BUCHANAN.

OBJECTIVE 2-3. IN CONJUNCTION WITH NEIGHBORING COMMUNITIES AND THE TOWN'S CAPITAL IMPROVEMENT PLAN, EXPAND ON THE REGIONAL BICYCLE AND PEDESTRIAN NETWORK TO INCREASE CONNECTIONS TO TRAIL SYSTEMS AND ENCOURAGE OUTDOOR RECREATION.

Recommendations

- ▶ Extend CE trail to eastern border of Town.
- ▶ Build wide paved shoulders along CTH Z to eastern border of Town (construction planned for 2025).

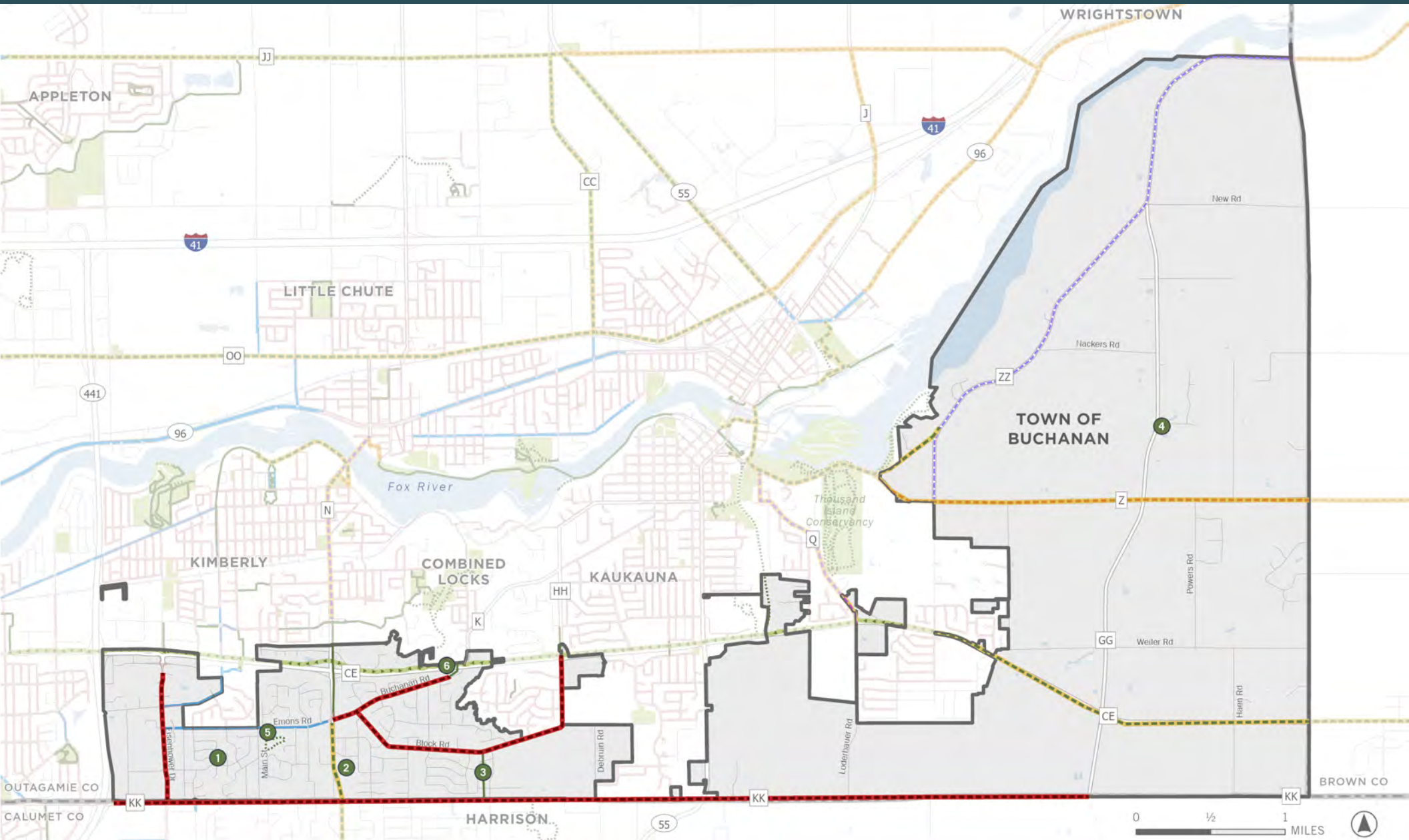


WHAT WE KNOW

Outagamie County's Bicycle and Pedestrian Plan was updated in 2023, and the Bicycle and Pedestrian Plan for the Appleton (Fox Cities) Metropolitan Planning Organization (MPO) was updated in 2021. The Outagamie County plan highlights CTH Z, CTH N, and the CE trail as recommended bicycle and pedestrian connections in Buchanan. The Appleton (Fox Cities) MPO plan identifies improved bicycle and pedestrian connections to Green Bay and the Loop the Locks trail as two "big idea connections" for the Town.

Map 5-1 highlights the local and regional recommended network for the community.

MAP 5-1. RECOMMENDED BICYCLE AND PEDESTRIAN NETWORK



- 1 Springfield Park
- 2 Town Hall Park
- 3 Hickory Park
- 4 Historic Bridge Area
- 5 Main St Pond Trail
- 6 CE Trail Underpass (Buchanan)

- CE Trail
- Park

- Existing Bike Lane
- Existing Paved Trail
- Existing Unpaved Trail
- Existing Sidewalk
- Existing Wide Paved Shoulder

- Outagamie County Recommended Network
- Bike Route
 - Paved Trail
 - Protected Bike Lane

- CORP Additional Recommended Connections
- Bicycle and Pedestrian Connection



STRATEGICALLY INCREASE THE NUMBER OF PARK SITES WITHIN THE TOWN OF BUCHANAN AS THE TOWN CONTINUES TO GROW.

OBJECTIVE 3-1. DEVELOP NEW PARKS IN AREAS UNDERSERVED BY EXISTING PARKS.

Recommendations

- ▶ Make direct purchases of land in areas where a new public park would substantially benefit the citizens.
- ▶ Work with the Plan Commission and Town Board to ensure that sufficient public recreation areas are designated in any new development within the Town.
- ▶ Complete an updated park impact fee study.



WHAT WE KNOW

A park impact fee is a charge imposed on new development projects by local municipalities to fund the creation or expansion of public park facilities necessitated by population growth and increased usage. These fees ensure that as communities grow, the burden of providing adequate parks does not fall solely on existing residents but is shared by new developers whose projects contribute to recreational demand.

The Town of Buchanan adopted a Park Impact Fee Ordinance and public facilities needs assessment study in 2009. The Town should conduct an updated study to evaluate if changes are needed to the existing ordinance.

TABLE 5-1. TOWN OF BUCHANAN CORP 5-YEAR ACTION PROGRAM

Project	Est. Cost	2025	2026	2027	2028	2029
Town Hall Park						
Master Plan	\$15,000.00		\$15,000.00			
Implement Other Items in the Master Plan	\$45,000.00		\$45,000.00			
ADA Rubberized Playground Surface	\$30,000.00		\$30,000.00			
Asphalt Trail Extension (~0.17 Miles)	\$33,000.00			\$33,000.00		
Solar Powered LED Light Upgrades	\$21,000.00			\$21,000.00		
Additional Shade Trees (5-7)	\$3,000.00	\$3,000.00				
Low Maintenance Prairie/Perennials	\$2,500.00	\$2,500.00				
Park Maintenance: (refresh mulch, resurface/maintain courts, refresh paint where applicable, repair equipment)	\$25,000.00	\$25,000.00				
Hickory Park						
Master Plan	\$15,000.00			\$15,000.00		
Implement Other Items in the Master Plan	\$45,000.00			\$45,000.00		
New/Improved Shelter with Electricity	\$150,000.00			\$150,000.00		
New ADA Compliant Playground	\$165,000.00					\$165,000.00
Youth Soccer Field	\$6,200.00				\$6,200.00	
Asphalt Trail Extension (~0.1 Miles)	\$55,400.00				\$55,400.00	
Low Maintenance Prairie/Perennials	\$2,500.00		\$2,500.00			
Additional Shade Trees (5-7)	\$3,000.00		\$3,000.00			
Convert One Tennis Court to Four Pickleball Courts	\$5,000.00			\$5,000.00		
Park Maintenance: (refresh mulch, resurface/maintain courts, refresh paint where applicable, repair equipment)	\$25,000.00		\$25,000.00			
Main Street Pond Park						
New ADA Compliant Playground	\$165,000.00	\$165,000.00				
Fitness Stations	\$22,500.00				\$22,500.00	
Asphalt Trail (~0.42 Miles)	\$96,600.00	\$96,600.00				
Dog Waste Stations and Benches (3 locations per objective)	\$5,100.00		\$5,100.00			
Park Maintenance: (refresh mulch, resurface/maintain courts, refresh paint where applicable, repair equipment)	\$25,000.00				\$25,000.00	
Springfield Park						
Park Maintenance: (refresh mulch, resurface/maintain courts, refresh paint where applicable, repair equipment)	\$25,000.00					\$25,000.00
Future Park Acquisition (TBD)						
Wayfinding						
Town-wide Park and Trail Wayfinding Signage	\$175,000.00					\$175,000.00
Total Cost Per Year	\$1,160,800.00	\$292,100.00	\$125,600.00	\$269,000.00	\$190,100.00	\$365,000.00

TABLE 5-2. WDNR KNOWLES-NELSON STEWARDSHIP LOCAL ASSISTANCE GRANT PROGRAMS

Program	Purpose	Funding Priorities	Details
Stewardship Local Assistance Acquisition and Development of Local Parks (ADLP) Subprogram	Helps communities and organizations acquire/develop/improve land for public nature-based outdoor recreation	<ul style="list-style-type: none"> • Support a local CORP; • Support multiple uses, for multiple seasons; • Are of regional/statewide significance; • Result in a first-of-a-kind facility for the applicant; • Projects that involve the use of materials or products utilizing Wisconsin recycled products; • Provides recreation opportunities for elderly, minorities, disabled, and low-income populations; • Project facility planned will be more basic in attributes than elaborate; • Projects to renovate existing facilities that are in danger of being lost for public use; • Provide accessible recreation opportunities; and • Have other priority characteristics specified in statute/code. 	<ul style="list-style-type: none"> • 50% local match; • May 1st deadline; and • Project must be identified in local CORP.
Stewardship Local Assistance Acquisition of Development Rights (ADR) Subprogram	Protect natural, agricultural, and forest lands that provide nature-based outdoor recreation by purchasing development rights and compensating landowners for limited future development on their land	<ul style="list-style-type: none"> • Land with water frontage; • Land that provides a buffer between developed and natural areas; • Land that connects existing natural resource protection areas; and • Land with other priority characteristics specified in statute/code. 	<ul style="list-style-type: none"> • 50% local match; • May 1st deadline; and • Project must be identified in local CORP.
Stewardship Local Assistance Urban Greenspace (UGS) Subprogram	Supports acquisition of land for open natural areas and community gardens within or near urban areas	<ul style="list-style-type: none"> • Preserves land on the natural heritage inventory database; • Implements elements of approved water quality plans or initiatives; • Has unique natural features; • Provides a linear corridor connecting open natural areas; • Has water frontage; • Is of regional or statewide significance; • Land related to brownfields redevelopment; • Land can accommodate all NBOA uses; hunting, fishing, trapping, hiking, and cross country skiing; • Provides area for community gardens; • Has other priority characteristics specified in statute/code; and • Involve two or more governmental agencies. 	<ul style="list-style-type: none"> • 50% local match; • May 1st deadline; and • Project must be identified in local CORP.
Stewardship Local Assistance Urban Rivers (UR) Subprogram	Helps restore and preserve the character of urban river corridors through the acquisition and development of land adjacent to rivers	<ul style="list-style-type: none"> • Restore river corridors following dam removal; • Support redevelopment of brownfields; • Acquire land with unique natural or aesthetic values; • Acquire land that connects with previous land acquisitions; • Provide outdoor recreation opportunities for diverse urban populations; • Provide new or expanded access to urban waterways; • Involve two or more governmental agencies; • Support local/regional plans; and • Have other priority characteristics specified in statute/code. 	<ul style="list-style-type: none"> • 50% local match; • May 1st deadline; and • Project must be identified in local CORP.

TABLE 5-3. FEDERAL RECREATION GRANT PROGRAMS

Program	Purpose	Funding Priorities	Details
Federal Land and Water Conservation Fund (LWCF)	Supports land acquisition and development of high-quality outdoor recreation amenities in local communities	<ul style="list-style-type: none"> • Meet the needs of urban areas; • Provide recreation opportunities for elderly, minority, disabled, and low-income populations; • Acquire land in areas with limited outdoor recreation facilities; • Provide multi-use and multi-season facilities; • Enhance or preserve natural beauty; • Are proposed by applicants which have sufficient financial resources to adequately maintain and operate the project; and • Have other priority characteristics specified in law/statute/code or the LWCF Federal Financial Assistance Manual, Vol. 72. 	<ul style="list-style-type: none"> • 50% local match; • May 1st deadline; and • Project must be identified in local CORP.
Federal Recreational Trails Program (RTP)	Provides funds to develop and maintain recreational trails and trail-related facilities for both motorized and non-motorized recreational trail uses	<ul style="list-style-type: none"> • Rehabilitation and maintenance of existing trails and trailhead facilities; • Development of new trails, trail linkages and trailhead facilities (some restrictions apply on federal lands); and • Acquisition of property for trails in areas with limited trail opportunities. 	<ul style="list-style-type: none"> • 50% local match; • May 1st deadline; and • Project must be identified in local CORP and SCORP.

TABLE 5-4. ALL WDNR DEPARTMENT GRANT PROGRAMS (PART ONE)

Program	Website
Angler Recruitment, Retention and Reactivation (R3) Grants	https://dnr.wisconsin.gov/Aid/angler.html
ARPA Well Abandonment	https://dnr.wisconsin.gov/aid/WellAbandonmentARPA.html
ARPA Well Compensation	https://dnr.wisconsin.gov/aid/WellCompensationARPA.html
ATV Enhancement	https://dnr.wisconsin.gov/Aid/atvEnhancement.html
ATV Patrols	https://dnr.wisconsin.gov/ATV/ATVPatrolGrants
ATV Trails	https://dnr.wisconsin.gov/Aid/atvTrails.html
Boat Patrol Grants	https://dnr.wisconsin.gov/Boat/BoatPatrolGrant
Boating Infrastructure Grant (BIG) Program	https://dnr.wisconsin.gov/Aid/BIG.html
Clean Diesel Grant Program	https://dnr.wisconsin.gov/Aid/CleanDiesel.html
Clean Vessel Act	https://dnr.wisconsin.gov/Aid/CleanVessel.html
County Conservation Aids	https://dnr.wisconsin.gov/Aid/CountyConservation.html
County Forest Acquisition (Stewardship)	https://dnr.wisconsin.gov/topic/stewardship/applyCounty
County Forest Acreage Share Payments	https://dnr.wisconsin.gov/topic/CountyForests/
County Forest Administration Grants	https://dnr.wisconsin.gov/Aid/ForestAdmin.html
County Forest Sustainable Grant	https://dnr.wisconsin.gov/Aid/ForestSustainable.html
County Forest Wildlife Habitat Grant	https://dnr.wisconsin.gov/Aid/ForestHabitat.html
Dam - Municipal	https://dnr.wisconsin.gov/Aid/DamMunicipal.html
Dam - Removal	https://dnr.wisconsin.gov/Aid/DamRemoval.html
Dry Cleaner Environmental Response Fund (DERF)	https://dnr.wisconsin.gov/Aid/DERF.html
Emerging Contaminants - Small/Disadvantaged Communities Grant Program (EC-SDC)	https://dnr.wisconsin.gov/aid/EC-SDC.html
Forest Fire Protection (FFP)	https://dnr.wisconsin.gov/Aid/ForestFireProtection.html
Forest Landowner Grant Program (WFLGP)	https://dnr.wisconsin.gov/Aid/ForestLandowner.html
Friends of State Parks (Stewardship)	https://dnr.wisconsin.gov/topic/stewardship/ApplyFriends
Friends of State Parks and Forests (Heritage Trust Fund)	https://dnr.wisconsin.gov/topic/parks/friends/grants/heritagetrust
Habitat Area (Stewardship)	https://dnr.wisconsin.gov/topic/stewardship/applyNCO
Hunter R3 (Recruitment, Retention and Reactivation) Grant Program	https://dnr.wisconsin.gov/Aid/HunterRecruit.html
Landowner Incentive Program	https://dnr.wisconsin.gov/topic/endangeredresources/lip.html
Motorized Stewardship Grants	https://dnr.wisconsin.gov/Aid/MotorStew.html
Municipal Flood Control	https://dnr.wisconsin.gov/Aid/MunFloodControl.html
Natural Areas (Stewardship)	https://dnr.wisconsin.gov/topic/stewardship/applyNCO
Notice of Intent/Discharge Cost-Share Grants (NOD)	https://dnr.wisconsin.gov/Aid/NOD.html

TABLE 5-5. ALL WDNR DEPARTMENT GRANT PROGRAMS (PART TWO)

Program	Website
Off-Highway Motorcycle	https://dnr.wisconsin.gov/Aid/OHMTTrails.html
Ready for Reuse Hazardous Substance Grants	https://dnr.wisconsin.gov/topic/Brownfields/rlfHaz.html
Ready for Reuse Petroleum Grants	https://dnr.wisconsin.gov/topic/Brownfields/rlfPetro.html
Recreational Boating Facilities	https://dnr.wisconsin.gov/topic/Brownfields/rlfPetro.html
Recycling Consolidation Grant	https://dnr.wisconsin.gov/Aid/Consolidation.html
Recycling Grant to Responsible Units	https://dnr.wisconsin.gov/Aid/Recycling.html
Shooting Range Grants	https://dnr.wisconsin.gov/Aid/ShootingRange.html
Snowmobile Trail Aids	https://dnr.wisconsin.gov/Aid/SnowmobileTrails.html
Snowmobile Patrols	https://dnr.wisconsin.gov/Snowmobile/SnowPatrolGrant
Sport Fish Restoration (SFR) - Boat Access	https://dnr.wisconsin.gov/Aid/SFR-BA
Sport Fish Restoration (SFR) - Fishing Piers	https://dnr.wisconsin.gov/Aid/SFR-FP
Stamp Funds - Wild Turkey, Pheasant and Waterfowl	https://dnr.wisconsin.gov/topic/WildlifeHabitat/stamps.html
State Trails (Stewardship)	https://dnr.wisconsin.gov/topic/stewardship/applyNCO
Streambank Protection (Stewardship)	https://dnr.wisconsin.gov/topic/stewardship/applyNCO
Summer Tribal Youth Program	https://dnr.wisconsin.gov/Aid/styp.html
Surface Water Grants	https://dnr.wisconsin.gov/Aid/SurfaceWater.html
Targeted Runoff Management Grants	https://dnr.wisconsin.gov/Aid/TargetedRunoff.html
Underserved Drinking Water System	https://dnr.wisconsin.gov/aid/udws
Urban Forestry	https://dnr.wisconsin.gov/topic/UrbanForests/grants/index.html
Urban Forestry Catastrophic Storm Grant	https://dnr.wisconsin.gov/topic/UrbanForests/grants/index.html
Urban Nonpoint Source & Storm Water Management Grants	https://dnr.wisconsin.gov/Aid/UrbanNonpoint.html
Urban Wildlife Damage/Abatement Control	https://dnr.wisconsin.gov/Aid/UWDAC.html
Utility Terrain Vehicle (UTV) Trails	https://dnr.wisconsin.gov/Aid/UTVTrails.html
Weed Management Area - Private Forest Grant Program (WMA-PFGP)	https://dnr.wisconsin.gov/Aid/WMA.html
Well Abandonment	https://dnr.wisconsin.gov/Aid/WellAbandonment.html
Well Compensation	https://dnr.wisconsin.gov/Aid/WellCompensation.html
Wildlife Damage Abatement and Claims Program	https://dnr.wisconsin.gov/Aid/WDACP.html
Wisconsin Assessment Monies (WAM)	https://dnr.wisconsin.gov/topic/brownfields/wam.html
Wisconsin Habitat Partnership Fund	https://dnr.wisconsin.gov/aid/whpf.html
Wisconsin Wetland Conservation Trust in Lieu Fee Mitigation Program (WWCT)	https://dnr.wisconsin.gov/topic/wetlands/wwct

TABLE 5-6. FEDERAL, STATE, AND COMMUNITY GRANT PROGRAMS

Program	Partner	Purpose	Website
Surface Transportation Block Grant program (STBG)	Wisconsin Department of Transportation	Provides flexible funding that may be used by States and localities for projects to preserve and improve the conditions and performance on any Federal-aid highway, bridge and tunnel projects on any public road, pedestrian and bicycle infrastructure, and transit capital projects, including intercity bus terminals	https://www.fhwa.dot.gov/specialfunding/stp/
Transportation Alternatives Program (TAP)	Wisconsin Department of Transportation	Provides funding for projects that meet eligibility criteria for bicycle and pedestrian-related projects used for transportation purposes	https://wisconsindot.gov/Pages/doing-bus/local-gov/astnce-pgms/aid/tap.aspx
Highway Safety Improvement Program (HSIP)	Wisconsin Department of Transportation	Develop and implement, on a continuing basis, stand-alone safety projects designed to reduce the number and severity of crashes on all streets and highways	https://safety.fhwa.dot.gov/hsip/
Safe Routes to School (SRTS) Grant Program	East Central Wisconsin Regional Planning Commission	Provides funding and programming for bicycle and pedestrian activities to promote walking and biking to school	https://eastcentralsrts.org/
Community Development Block Grant program (CDBG)	Wisconsin Department of Administration	Provides annual grants to develop decent housing and a suitable living environment, expanding economic opportunities for low- and moderate-income people	https://doa.wi.gov/DECHR/DEHCR%20CDBG%20Brochure.pdf
Community Facilities Direct Loan & Grant Program	U.S. Department of Agriculture	Provides affordable funding to develop essential community facilities (e.g. health care, street improvements, community centers, libraries, community gardens) in rural areas with no more than 20,000 residents	https://www.rd.usda.gov/programs-services/community-facilities/community-facilities-direct-loan-grant-program-16
Environmental Education (EE) Grants	U.S. Environmental Protection Agency	Provides financial support for projects that design, demonstrate, and/or disseminate environmental education practices, methods, or techniques	https://www.epa.gov/education/grants
David L. and Rita E. Nelson Family Fund	Community Foundation for the Fox Valley Region	Support the areas of parks, recreation, waterways, education, historic preservation, health care, and community services and centers	https://www.cffoxvalley.org/grants-scholarships/grants/grant-opportunities/
Kiwanis Club grants	Darboy Kiwanis Club	Support projects that benefit kids and families in the Darboy area	https://www.darboykiwanis.org/
Brownfields Coalition Assessment Grant	U.S. EPA, Calumet County, Outagamie County, Fox Cities Greenways, Inc.	Help mitigate the adverse effects of environmentally contaminated sites within Calumet and Outagamie Counties	https://www.co.calumet.wi.us/1004/Brownfield-Assessment-Grant-Program
Fox Cities Greenways, Inc. (FCGI) Bi-Annual Grant	Fox Cities Greenways, Inc.	Provides financial support for projects bi-annually related to bicycle and pedestrian infrastructure, equipment, and events in the Fox Cities	https://www.foxcitiesgreenways.org/grant-application

6

RESOLUTION OF ADOPTION

**TOWN OF BUCHANAN
RESOLUTION NO. 2024-12**

**RESOLUTION OF THE TOWN BOARD OF THE TOWN OF BUCHANAN
ADOPTING THE COMPREHENSIVE OUTDOOR RECREATION PLAN (CORP)**

The Town Board of the Town of Buchanan, Outagamie County, Wisconsin does hereby resolve as follows:

WHEREAS, the Town of Buchanan has requested the development of a community wide open space and recreation facilities plan; and

WHEREAS, the Town of Buchanan Parks Committee and Plan Commission incorporated previous Town planning documents and worked closely with staff and other parties to prepare the Town's open space and recreation facilities plan; and

WHEREAS, the Town of Buchanan Open Space and Recreation Facilities Plan encompasses a general outline and is a valuable tool for development of parks and recreation facilities throughout the Town through the year 2029; and

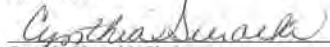
WHEREAS, adoption of said plan is required for the Town of Buchanan to become eligible for cost sharing aid programs administered by the State of Wisconsin;

THEREFORE, BE IT RESOLVED, that the Town of Buchanan Town Board adopt the attached Town of Buchanan Comprehensive Outdoor Recreation Plan (CORP) as the approved park and recreation plan for the Town.

Adopted this 17th day of September, 2024


Joseph Coenen, Town Chairperson

ATTEST:


Cynthia Sieracki, Clerk

Motion to Approve Resolution 2024-12 made by: *Meyer/Knuppel*

Votes:

Title	Name	Aye	Nay	Other
Supervisor I	Lawrence	X		
Supervisor II	Knuppel	X		
Supervisor III	Kavanaugh	X		
Supervisor IV	Meyer	X		
Chairperson	Coenen	X		

Posted: September 19, 2024

Resolution of
Adoption



Town of Buchanan

N178 County Rd N. Appleton, WI 54915

Phone: 920-734-8599 | Email: clerk@townofbuchanan.wi.gov

